



EMORY
UNIVERSITY
SCHOOL OF
MEDICINE

Department of
Emergency Medicine



EMORY EMERGENCY MEDICINE

2022 EM IN REVIEW

TRUE NORTH

Saving Lives,
Improving Health,
Providing Hope.

Our Mission



To deliver exceptional prehospital and emergency care, advance groundbreaking science through translational and public health research, accelerating innovation, and providing unmatched education to a diverse group of trainees and communities.

Our Vision



To stand alone as the premier academic Emergency Medicine Department in the nation by leading a transformation in acute and emergency care delivery through discovery of innovative data-driven solutions that improve the patient/family experience, preparing the next generation of emergency care providers for the future and guiding discoveries that save lives, improve health and provide hope.

CONTENTS

INTRODUCTION

- 4 LETTER FROM THE CHAIR
- 5 LEADERSHIP TEAM

SPOTLIGHT

- 6 TELE-EMERGENCY MEDICINE
- 8 HEALTH DesignED
- 10 WELLNESS, EQUITY, DIVERSITY, AND INCLUSION

CLINICAL SITES

- 14 EMORY UNIVERSITY HOSPITAL
- 16 EMORY UNIVERSITY HOSPITAL MIDTOWN
- 18 EMORY JOHNS CREEK HOSPITAL
- 20 GRADY MEMORIAL HOSPITAL

EM SECTIONS

- 22 MEDICAL TOXICOLOGY
- 26 PREHOSPITAL AND DISASTER MEDICINE
- 30 EMERGENCY ULTRASOUND
- 32 GLOBAL HEALTH
- 34 OBSERVATION MEDICINE

EDUCATION

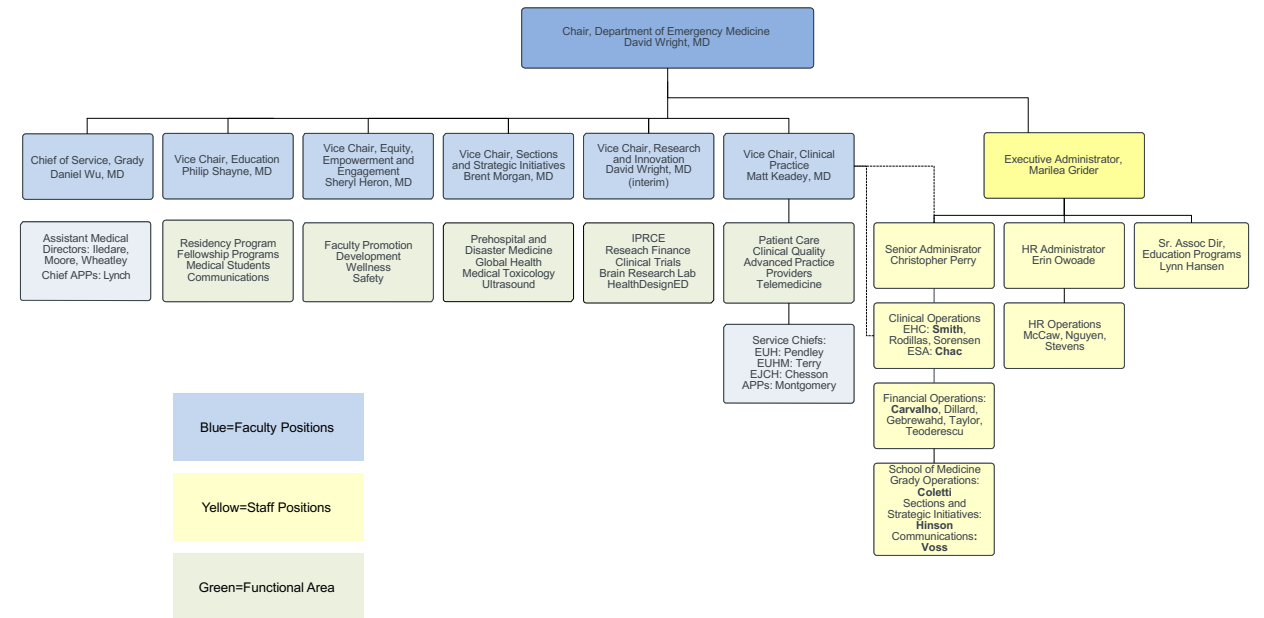
- 36 UNDERGRADUATE MEDICAL EDUCATION
- 37 GRADUATE MEDICAL EDUCATION
- 38 RESIDENCY PROGRAM
- 39 FACULTY ENGAGEMENT AND ADVANCEMENT TEAM
- 40 NEW STAFF, PHYSICIANS, FELLOWS, AND ADVANCED PRACTICE PROVIDERS

TEAM

- 41 AWARDS
- 45 RESEARCH PUBLICATIONS

Emory University Department of Emergency Medicine

ORGANIZATIONAL CHART



MESSAGE FROM THE CHAIR

The Evolution of Emergency Medicine: Reflecting and Looking Ahead

The Department of Emergency Medicine remains steadfast in its mission to impact our patients' lives, foster our students' growth, ensure our community's safety, and contribute to global health through our multifaceted roles in clinical service, education, innovation, and research.

In this edition of "EM in Review," we delve into the whirlwind of 2021 and 2022, recounting the hurdles we surmounted, from the complexities brought about by the COVID-19 variants, supply chain disruptions, and the nursing deficit to the unexpected emergence of the Monkey Pox outbreak. During these taxing times—marked by arguably the gravest pandemic in a century—our team remained resilient, facing adversity head-on.

Our heartfelt gratitude goes out to all our healthcare allies and visionary leaders who braved these trying times alongside us. United in purpose, the Emergency Medicine team demonstrated its tenacity, collaboratively tackling multifarious challenges.

2022 witnessed the Department pioneering several innovations, underscoring our vanguard role in telemedicine and health design's nascent arenas. As this edition unfolds, you will discover myriad initiatives spearheaded by our team, testimonies to our ambition and aspiration.

As we peer into the horizon, the promise of Emergency Medicine sparkles. Our vision revolves around revolutionizing how patients interface with the healthcare system, ensuring holistic care anytime, anywhere. Simultaneously, we're sculpting the future by preparing budding clinicians to assimilate tech-centric care and novel care paradigms. Emory EM remains at the forefront, championing technology's potency in enhancing accessibility and ensuring care delivery remains seamless—whether you're at home, work, or on the move.

Through pioneering ventures like Health DesignED, TeleEMS, and Clinical Decision Units (CDUs), Emory EM is reshaping patient-healthcare dynamics. As we weave artificial intelligence more intricately into our operational tapestry and harness wearable technology's diagnostic capabilities, we remain optimistic. The emerging tools and platforms promise to be game-changers for those seeking urgent care. Furthermore, leveraging data analytics offers unprecedented insights, potentially illuminating public health trends and concerns. Our unwavering commitment is to harness these innovations, enhancing patient experiences and ensuring optimal outcomes.

In closing, a profound thank you to each member of our team. Your daily contributions—whether through groundbreaking research, exemplary patient care, genuine compassion and empathy, community outreach, mentorship, or clinical expertise—resonate deeply. As we stand on the cusp of 2023, I eagerly anticipate the trailblazing endeavors we shall undertake together.

David Wright, M.D.
Chair, Department of Emergency Medicine



MEET OUR LEADERS

Front row (left to right): **Dr. David Wright**, Chair, Department of Emergency Medicine; **Dr. Sheryl Heron**, Vice Chair for Equity, Engagement and Empowerment, **Dr. Matthew Keadey**, Vice Chair for Clinical Practice, Emory Healthcare

Back row from (left to right): **Dr. Brent Morgan**, Vice Chair for Strategic Initiatives and Director of the Emory Emergency Medicine/CDC/Georgia Poison Center Medical Toxicology Fellowship; **Dr. Philip Shayne**, Vice Chair for Education

EMORY EMERGENCY MEDICINE ADMINISTRATORS



Marilea Grider, Executive Administrator, Emergency Medicine and Pathology; **Chris Perry**, Senior Administrator, Emergency Medicine

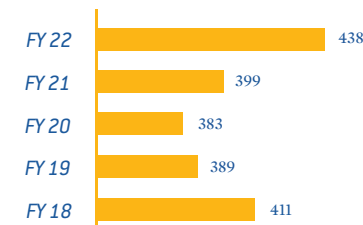
EXECUTIVE COMMITTEE

The Executive Committee brings together leaders from the Department of Emergency Medicine to enact the recommendations of the Vice Chair Group and share thoughts and ideas to ensure alignment of the Department's strategic plan.



First row (left to right): Marilea Grider, Dr. David Wright, Chair, and Dr. Matthew Keadey
Second row (left to right): Dr. Daniel Wu, Dr. Douglas Ander, Dr. Sheryl Heron, Dr. Anna Yaffee, and Dr. Alex Isakov
Third row (left to right): Dr. Andrew Pendley, Dr. Ziad Kazzi, Dr. Joshua Wallenstein, and Chris Perry
Fourth row (left to right): Dr. Brent Morgan, Dr. Philip Shayne, and Jocelyn Montgomery
Not pictured: Dr. Nicole Franks, Dr. Gregg Helland, Dr. Megan Henn, Dr. Michelle Lall, Dr. Mike Ross, Dr. Jonathan Rupp, Dr. Monique Smith, Meredith Stauch, and Dr. Nataisia Terry

DEPARTMENT TOTAL GROWTH



Thank you to Leo Carvalho and Senem Hinson for compiling this data.

SPOTLIGHT



WATCH ER-TEMS VIDEO

Tele-Emergency Medicine

PREPARED BY: DR. MICHAEL CARR AND DR. MICHAEL ROSS

BACKGROUND

The COVID-19 pandemic created the immediate need to expand the role of telemedicine across the healthcare system. The Emory Department of Emergency Medicine Tele-Emergency Medicine (TEM) workgroup was developed in response to the COVID-19 pandemic with a goal of improving timely access to high value patient care. Innovative audio-visual interfaces, workflows, and staffing were developed which led to thousands of virtual acute care evaluations over the course of the pandemic, and beyond.

TELE-EMERGENCY MEDICINE FULL SPECTRUM VISION:
Telemedicine is a tool that has been used to manage patients in a variety of settings. The Emory TEM group has applied telemedicine to the full continuum of acute unscheduled care.



Dr. Michael Carr

EMERGENCY ROOM TELE-EMERGENCY MEDICAL SERVICES (ER-TEMS)

Emory Rural Tele-EMS (ER-TEMS) is a novel telemedicine network with a primary goal to address medical disparities in rural residents throughout the state of Georgia. ER-TEMS has been deployed in fifteen rural counties (15 ambulances) throughout southern Georgia. They recently partnered with the Southern Regional Disaster Response System (SRDRS) funded by the Assistant Secretary for Preparedness and Response (ASPR). ER-TEMS provides a virtual disaster support framework that is the first-of-its-kind and is a model for other states and Federal Emergency Management Agency (FEMA) regions throughout the country.

TELE-TRIAGE

Physicians remotely staffed two triage zones (“hot” and “cold”) at two hospitals during several waves of the COVID-19 pandemic. They performed several thousand screening medical exams, ordered tests and treatments, called consultants, while minimizing exposures and preserving the use of limited PPE equipment. These efforts expedited patient care as a result.

EMERGENCY MEDICINE TELE-VISIT (ER-TV)

Acute care ER-TV program is a multifaceted approach to accommodating acute, unscheduled tele-visits from multiple referral sources. ER-TV provides a platform where on-call emergency physicians can provide a virtual evaluation for patients referred from the Emory nurse navigation call center, 911 nurse navigation call centers, Emory waiting rooms, and other partner organizations.

TELE-OBSERVATION MEDICINE (TOM)

Telemedicine is ideally suited for “cognitive” services such as clinic visits, emergency visits, critical care, and now at Emory: observation visits. Observation services in a protocol driven emergency department observation unit (EDOU) provides several benefits relative to traditional care in an inpatient bed. The Emory TOM group is the first in the country to demonstrate that virtual rounding is comparable to in-person rounding, with several unique advantages. In their study of 43,916 observation patients, they found no decline in ED OU performance with virtual rounds. More significantly, relative to traditional inpatient settings, ED OU length of stays were shorter (19 vs 38 hours), costs were lower (\$1,890 vs \$2,814), and admit rates were lower (17.5% vs 26%).

PUTTING IT ALL TOGETHER

Emory Department of Emergency Medicine has partnered with vendors to build a capable digital access point to accommodate the above, multiple referral sources. The Emory Emergency Digital Front Door will be a virtual solution for intaking and registering patients, and for connecting virtual access patients with the appropriate, credentialed provider. Future programs include mobile integrated healthcare, inHOUSe (in-home observation unit services), and PD-TV (post-discharge tele-visits). Virtual healthcare solutions are quickly becoming essential to meet the growing demand for Emory’s acute care services.

ER-TEMS

EMORY RURAL TELE-EMS NETWORK

WHAT

The Emory Rural Tele-EMS Network (ER-TEMS) provides telemedicine services to ambulance crews treating patients across rural Georgia. The Health Resources and Services Administration (HRSA) awarded ER-TEMS a \$1.2 million grant over four years. With this grant, the ER-TEMS team will create a sustainable model resulting in improved efficiency of the EMS system as well as improved medical care. Early comprehensive telemedicine assessments will reduce unnecessary transports and optimize the utilization of hospital resources to deliver the right care at the right time and the right place.

WHO

Ill and injured rural residents of Georgia are at a disadvantage. Prolonged EMS transport times due to long-distances contribute to worse medical outcomes in time-sensitive critical conditions like strokes, heart attacks, and trauma. Rural Georgians also have an increased incidence of high-risk medical conditions leading to complications of childbirth. Worse medical outcomes in rural Georgia are linked to the prolonged time required to transport patients to the closest most appropriate medical facility.

WHY

The ultimate goals of the ER-TEMS program are to address disparities in medical care, support rural EMS personnel, and enhance access to high quality healthcare for rural patients. We expect to achieve improved medical outcomes for rural Georgians by providing comprehensive evaluations and treatment recommendations at the point of patient contact with EMS. Implementation of this telehealth network in rural EMS will allow for evidence-based coordinated care for thousands of rural Georgians. ER-TEMS will leverage relationships with academic, commercial, and public health partners to decrease time-to-diagnosis and time-to-definitive care.

HOW

Computers and remotely linked telecommunications technology allow for earlier comprehensive evaluation by Emory Emergency Physicians at the point of patient contact in rural Georgia. The patients are safely transported to local facilities for definitive care after initial stabilization and treatment, in collaboration with guidance from the on-call tele-emergency provider. The Emory physician coordinates care with the most appropriate and closest rural hospital to ensure consistent, up-to-date management that occurs at the right time and place.

WHERE

ER-TEMS Emergency Physicians are available to perform tele-EMS evaluations for patients residing in 15 rural counties of Georgia: Baldwin, Clay, Cobb, Cook, Decatur, Hancock, Lincoln, Mitchell, Morgan, Newton, Quitman, Randolph, Rockdale, Seminole, and Paulding.

SPOTLIGHT

Health DesignED

THE ACUTE CARE DESIGN + INNOVATION CENTER AT EMORY

COVID MESSAGING CAMPAIGN

At the height of the pandemic, Health DesignED leveraged its strengths in partner development to provide trusted and accessible health information to communities of color. The Health DesignED collaborated with a healthcare engagement company to increase COVID-19 awareness among vulnerable communities in Atlanta through a targeted mobile messaging campaign.

NEARLY
2.5 MILLION
MESSAGES SENT

TO OVER
450,000
PEOPLE IN
METRO ATLANTA

WITH
8 PARTNERS
THE OIL BAR,
UPS, UHG (LARGE ENTERPRISE PARTNERS),
EMORY HEALTHCARE,
ESSENCE, MERCY CARE,
BLK HLTH,
MEDCURA HEALTH

OVER
1 MILLION
GLOBAL USES
OF C19CHECK.COM

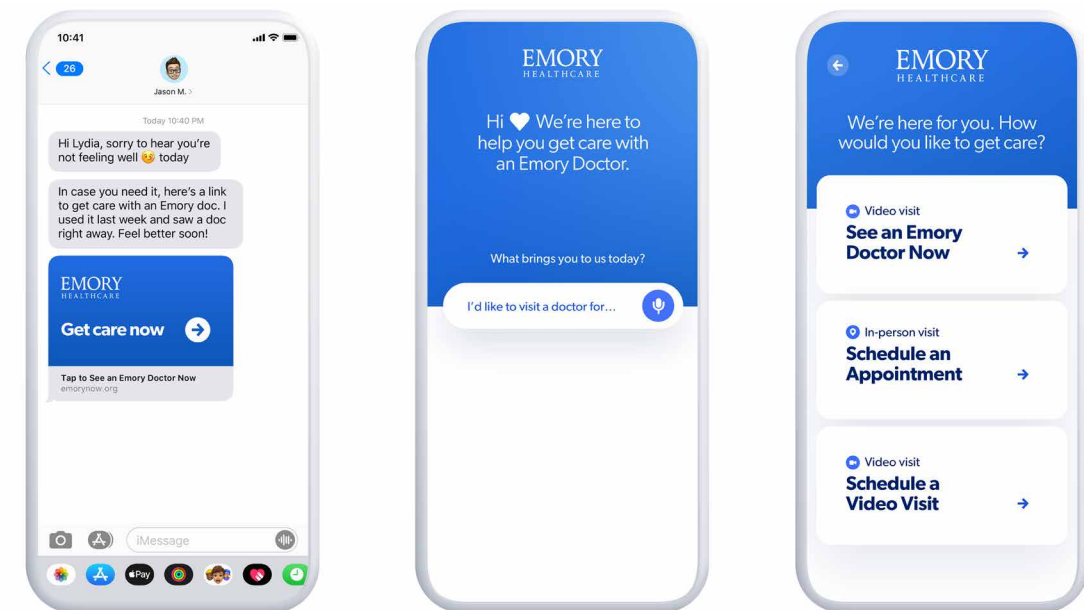
DATA SANDBOX

Recognizing that homogenous data is a barrier to equitable innovation, Health DesignED established a prototype of a Health Equity Data sandbox to bring together intentionally diverse datasets to capture the diversity in patients' lived experiences. The Health Equity Data Sandbox is a tool for uncovering insights within data to drive the discovery and development

of solutions by Emory and our industry partners. The Sandbox provides a centralized and secure environment for the discovery of knowledge and low-hypothesis exploration by combining datasets that are traditionally siloed and difficult to navigate independently like patient encounter data, labs, claims, and publicly available social determinants of health data.

DIGITAL FRONT DOOR

The Health DesignED is reimagining the acute care continuum to meet patients where they are as soon as they feel their first symptom. Our Digital Front Door is designed to improve care and patient outcomes for the more than 75% of Americans who begin their medical journey on Google. By offering an omnichannel platform that provides patients with access to accurate and timely information about their symptoms and appropriate care pathways including virtual on-demand care with an Emory Emergency Medicine physician, the Digital Front Door enhances the patient experience and reduces avoidable and costly visits to the emergency department. With a launch planned for late 2022, we have partnered with innovative companies in the health technology space to deliver the value that is missing among disconnected digital health point solutions.



SYMPTOM CHECK AND TRIAGE

Patient uses triage assistant or message service to determine best course of care.

PERSONALIZED CARE PLAN

Depending on symptom triage, patient is offered appropriate care pathways, including potentially a virtual visit with an Emory Emergency provider.

DIGITAL FOLLOW-UP

Our Digital Front Door maintains strong patient engagement following their visit to support the patient's personalized care plan.

SPOTLIGHT

Wellness, Equity, Diversity, and Inclusion (WEDI)

Director of WEDI: Dr. Michelle Lall

VISION STATEMENT

Provide vision, guidance, coordination and leadership for the department's Equity, Diversity and Inclusion Committee and Wellness Committees that address their initiatives across the department's various clinical, teaching and research sites. These initiatives should be in alignment with the Department of Emergency Medicine's vision and strategic plan. Develop annual metrics to inform strategic planning/decision-making and create a dashboard to ensure accountability in tracking and monitoring of wellness, resilience, diversity, equity, inclusion, and women's initiatives.

DEPARTMENT DEMOGRAPHICS

INCLUSIVE OF EMORY UNIVERSITY TEAM MEMBERS AND NOT HEALTH CARE PROVIDERS ON THE TEAM

	FACULTY (154 TOTAL)	NATIONAL DATA*	RESIDENTS	NATIONAL DATA*	STAFF (40 TOTAL)	GRADY APPS (49 TOTAL)
Female	63 (41%)	38%	28%	52%	36%	31 (78%)
Asian	29 (19%)	13%	10%	15%	16%	1 (3%)
Black	21 (14%)	5%	5%	30%	6%	15 (38%)
Hispanic	8 (5%)	3%	6%	3%	9%	1 (3%)

*National Data from the Association of American Medical Colleges (AAMC)
Column 1: Medical School Faculty; Column 2: Active EM Physicians

STRENGTHS

The department has had a longstanding commitment to diversity, equity and inclusion. This includes a national, regional and local reputation as a department that has had tremendous success in recruiting, advancing and supporting URiM and women. In addition, there has been significant scholarship addressing diversity, equity and inclusion including manuscripts and key textbooks published on these topics.

OPPORTUNITIES

Develop a repository of meeting dates, conference dates, faculty development opportunities, and related local, regional and national events. This would be done with the intention to advocate and sponsor our female and URiM faculty to attend and participate in these targeted opportunities.

WEAKNESSES

Historically, advancing diversity, equity and inclusion rested on the shoulders of only a few people. While there has been an attempt to target programming specifically for mid-career female and URiM faculty, there is a need for a more coordinated approach to meet this goal that would include pathways for faculty to be competitive for leadership opportunities.

THREATS

There is a growing number of Emergency Medicine Academic Departments in Georgia that may compete for our URiM and women faculty, staff and learners. This could present a challenge to our department and school if we continue to solely rely on a few people in the department or on our department's reputation to sustainably recruit and retain women and URiM.



Wellness Committee

Chair: Dr. Mike Zdradzinski

Wellness Committee Highlights

During the pandemic and other critical incidents, the department has responded with debriefing sessions, focus groups, educational sessions, and sharing the resources of Emory's Faculty Staff Assistance Program.

THEME FOR THE YEAR

Re-establishing Connections

Looking forward to moving beyond COVID and re-invigorating wellness efforts, including in-person events. Continuing to support the team as they process the stress of the past few years through additional wellness outreach, education, and debriefing opportunities.

- » Family Leave working group was convened and made recommendations to the chair and vice chairs.
- » Townhall listening sessions were conducted with mid-career faculty and the entire faculty to solicit input on multiple topics including the clinical schedule and communications.
- » Faculty retreat September 2022

AFFINITY GROUPS

WEM-PWRDD

In November 2021, Women in Emergency Medicine-Promoting Wellness, Research, Diversity, and professional Development (WEM-PWRDD) gathered virtually and in-person to discuss navigating career transitions. We were lucky to have Dr. Kate Heilpern join us virtually as an invited guest to share her story and insight. We focused on academic career transitions and the satisfaction of female physicians in their clinical work using recently published work to guide our discussion.

Equity, Diversity and Inclusion Committee (EDIC)

Co-Chairs: Dr. Anika Backster, Dr. Sheryl Heron, Dr. Michelle Lall

EDIC Updates

In 2021, we worked to restructure EDIC. There are many active members of EDIC who work in the following sections: education, LGBTQ+ initiatives, recruitment and retention, recognition, advocacy, social EM, community outreach, and health equity.

Recruitment

MUSE Rotation - Mentoring Under-Represented Students in Emergency Medicine | Director: Maurice Selby

The purpose of this program is to provide a longitudinal mentoring program for rising clinical year medical students from underrepresented in medicine groups who have an interest in pursuing emergency medicine as a career.

We have recruited 3 MS4s for the 22-23 program and 3 MS3s for the 22-24 program.

Accommodations

- » Continued Collaboration with SAEM Accommodations committee to provide annual national conference didactic as well as scholarly papers and medical magazine articles. These initiatives promote an understanding of the need for various types of accommodations to patients, learners, and faculty.
- » Launched Emory EM webpage offering resources.
- » 21-22 paper published on Making Emergency Medicine accessible for all: the what, why, and how of providing accommodations for learners and physicians with disabilities. AEM Education and Training 2022: 6(S1):S71-76
- » Didactic presented to the National SAEM conference: From Inequity to Access: Evidence-based institutional practices to enhance care for individuals with disabilities.



EDIC Highlights

EDIC planned a successful LGBTQIA+ Welcome event for the GME Pride Committee for the new interns across GME

- » Dr. Maurice Selby is leading the development of a DEI curriculum
- » Hosted resident lecture on “LGBTQIA+ Health”
- » Unique cultural email campaign created by Dr. Anika Backster focusing on education for holiday and cultural topics throughout the year
- » Dr. Blum chairs the LGBTQIA+ group in Emory EM including 14 members (faculty and residents).
- » Dr. Blum is also on the steering committee for the LGBTQIA+ Faculty Affinity Group and the faculty advisor for the GME Pride Committee



Planned successful LGBTQIA+ themed yoga event in Candler Park called “Practice for a Purpose.” The proceeds helped fund a breast cancer surgery for a woman in that community

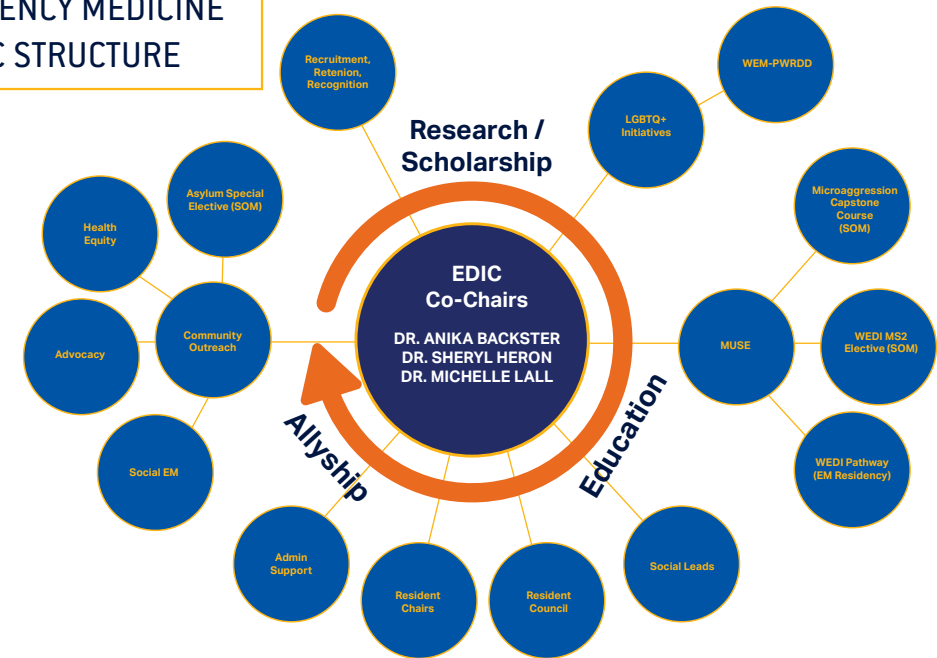
COMMUNITY OUTREACH EVENTS

- 🏳️‍🌈 Atlanta Pride
- 🚲 The Hope Clinic/AV200 Bike Ride
- 👨‍🚒 CPR Training
- 📌 “Shots in Arms” Community Vaccination Campaign in collaboration with Fair Count

ADVOCACY

- » Georgia Human Rights Clinic
- » Asylum Cases and Expert Declarations
- » Transgender healthcare reform policy

EMERGENCY MEDICINE EDIC STRUCTURE



COMMUNITY ENGAGEMENT WITH REFUGEE AND IMMIGRANT POPULATIONS

PARTNERSHIP WITH GEORGIA STATE UNIVERSITY PREVENTION RESEARCH CENTER AND GRADY TRAUMA SURGERY

Completed 3 Stop the Bleed Trainings in the Community:

- » Stop the Bleed Training in English, Burmese, Somali, Swahili
- » Stop the Bleed and CPR training at the Clarkston Summit in Pashto
- » Stop the Bleed Training in Brookhaven Community in Spanish

Multiple EM Residents/Faculty/APPs joined these trainings: Samira Asker, Michael Clery, Kimberly Herard, Esther Hwang, Nichelle Jackson, Mustafa Rasheed, Amy Zeidan

GEORGIA HUMAN RIGHTS CLINIC

- » Provided 10 asylum cases, supporting over 7 asylum related organizations (most referrals through The Georgia Asylum and Immigration Network)
- » Provided 24 expert declarations for medically vulnerable individuals detained throughout Georgia, most referrals coming from the Southern Poverty Law Center Southeast Immigrant Freedom Initiative (SPLC SIFI)
- » Developed “Know Your Medical Rights” Resources for individuals detained in immigration prisons
- » Developed immigration policy toolkits. Collaborated with Georgia State University Immigration Law Clinic, University of California San Francisco Health and Human Rights Clinic, and Center for Gender and Refugee Studies to develop ‘best practices for clinician-lawyer communication’ toolkit
- » With partner organizations SPLC SIFI, El Refugio, BAJI, filed a Civil Rights and Civil Liberties Complaint on behalf of medically vulnerable individuals at Stewart Detention Center
- » Developed and implemented an elective for second year medical students and fourth year medical students focused on creating asylum-immigration informed health systems

CLINICAL SITES

Emory University Hospital

The Emory University Hospital on Clifton Road is Emory Healthcare’s flagship quaternary care hospital. The Emory University Hospital Emergency Department (EUHED) leadership team, through years of culture work, has built a strong, resilient, and emotionally intelligent team of physician and advanced practice providers. Through Dr. Andrew Pendley and Dr. George Hughes’ leadership, the group has intentionally developed collaborative working relationships with the hospital’s specialists, service lines, and executive leadership.



RESILIENCY EFFORTS

The Covid pandemic has been the greatest challenge the EUHED, and frankly emergency medicine has ever faced. The EUHED encountered the same struggles that every emergency department nationally dealt with through the pandemic. Increasing patient volumes, nursing shortages and a lack of inpatient capacity led to boarding of admitted patients, room closures and long waits for non-emergent patients.

As with any crisis, innovative ideas often evolve to solve our problems. In response to fewer nurses and not enough treatment spaces, the EUHED has challenged the traditional model of patient ED care to improve the patient experience and department patient flow. In the traditional model of emergency department patient care, a patient would arrive, be triaged, be placed in a room, and finally see a provider. If there were no rooms, patients would often wait long periods of time. Through a series of rapid improvement events, the EUHED has transitioned to a “physician first model,” where physicians and advanced practice providers lead the triage process. Patients are seen and evaluated routinely within 30 minutes of arrival and are getting the right care on the front end so that rework is often not required. In the past, like most emergency departments, the EUHED utilized a physician in triage model for years.

However, this new care model is significantly different, where all physicians and advanced practice providers are working in triage to see patients upon arrival 24 hours a day and then they follow the patient throughout their course of care. In this new model, more than 85% of ED patients are being seen prior to being placed in a room. This new model of care has led to significant reductions in length of stay and left without completing care. Through the success of this initial work, a new LEAN-based effort has been undertaken to create a novel patient intake and rapid care area to further support our new care model. This novel model represents the first major revision to the triage process in over 55 years of emergency medicine and hopefully, based on its success, we can further explore its utility in other areas of medicine.



EUH LEADERSHIP

From left to right: Hali Smith, Lee Economy, Dr. George Hughes, Dr. Andrew Pendley, Julius Rodillas, Amanda Petrey

A PATHWAY TO SUCCESS

-  The ED is growing and positioning young leaders for succession within the department or leadership roles within the hospital
-  Deepening collaborations with telehealth initiatives in our department
-  Championing ED expansion within the hospital to accommodate a 10-year growth plan
-  Continue to develop an advanced practice provider pipeline through collaborations in the nursing and physician assistant schools
-  Partnering with nurse leaders to support emergency nurse development creating a culture of engagement that leads to increased retention
-  Well-developed quality program focused on patient outcomes to improve the patient care delivered
-  Partnering with award winning STEMI/Stroke/Sepsis programs

CLINICAL SITES

Emory University Hospital Midtown

OUR VISION

To achieve operational excellence by providing holistic care to patients and their families while providing a pinnacle workplace experience for physicians, advanced practice providers, nurses, and staff.

GOALS

1 Operational Excellence

- » Improve admit Length of Stay and Discharge Length of Stay
- » Decrease Left Without Being Seen
- » Expand areas for care in the ED
- » Decrease CT wait times
- » Maximize physical preparedness (stocking)

2 Best in Class Workplace

- » Increase collaboration between physicians, advanced practice providers and nurses to create an optimal provider and patient experience
- » Increase provider wellness and morale
- » Create a culture of workplace safety

3 Holistic Patient Care

- » Improve patient experience
- » Destination ED for Corporate Partners and Patients

BUILDING RELATIONSHIPS

The leadership at EUHM also made efforts to strengthen staff engagement and took efforts to increase staff morale secondary to the stress brought on by the Covid pandemic. The hospital worked with local restaurants to secure donations to ensure that staff had food during shifts. "Tea for the soul" was hosted by spiritual health at EUHM where a candlelit space was provided where staff could drink tea, receive a massage, and take a moment to relax. To foster employee engagement and camaraderie, virtual social events and holiday parties were coordinated. While we recognize the toll that the pandemic has taken on our staff, we remain dedicated to continuously improving morale.

Emory University Hospital Midtown has remained resilient throughout one of the toughest times of our lifetime and is committed to excellence in patient care and the wellness of our team.

PANDEMIC RESILIENCE

Emory University Hospital Midtown (EUHM) was at the center of the Covid surge and had to react quickly to work within the stresses created by sudden supply chain shortages as well as an uptick in the influx of patients seeking care. The new normal rapidly changed and EUHM did the same to keep up with the needs of both staff and patients. The Department of Emergency Medicine at large was quick to act and convened a daily Covid awareness report for all of the sites within our department to give updates on status, challenges, as well as needs. EUHM then worked within the local unit to continue to uphold the standard of care for our patients, while providing support to our staff throughout the difficulties presented by the global pandemic. From an operations perspective, EUHM made many changes in order to accommodate

the influx of Covid patients while still providing exemplary care. We sectioned off the waiting room to isolate patients both in the waiting room as well as treatment areas to mitigate the potential for Covid spread. With collaboration with nursing as well as infection prevention, we worked to develop conservation efforts for PPE, as well as protocols and procedures for the interaction, management, and movement of Covid patients. We partnered with local operating unit leadership to provide targeted clinical updates on ever-evolving covid-19 care management and held quarterly meetings with Grady EMS to streamline processes for patient care. As a result of the efforts by the Emergency Department at EUHM, we were recipients of the Daisy award for excellent level of care and attentiveness to patients.

WORKPLACE SAFETY INITIATIVES

- » Hiring dedicated ED Public Safety officers
- » Adding metal detectors and wand capabilities to the ED waiting room and ambulance bay entrance
- » Exploring the addition of bullet-resistant film to ED triage booth windows
- » Performed a standardized assessment of physical ED safety features led by a local Public Safety Director and identified opportunities to add locking mechanisms to triage booth, ensure ability to lock exterior ED doors in case of a violent event in front of the ED, improve visibility and availability of panic buttons, add card readers to specific doors to limit access to authorized personnel, ensure adequate security camera coverage of ED common areas, fix broken door locks to allow staff to shelter in place in case of an active shooter, and assess physical space redesign to provide more separation between care team members and behavioral health patients
- » The ED participates in the Workplace Violence Committee that meets monthly to review events and assess opportunities to improve workplace safety
- » Receive and review daily report of workplace violence events and follow-up with involved providers for ED-specific events to provide support and assess needs
- » Partnering with Public Safety to develop response plans, additional training, and educational tools to outline response to behavioral health or violent patient emergencies in the ED waiting room and ED care spaces
- » Encouraging providers to document workplace violence events using SAFE reports to provide data to support the need for change
- » Public Safety Director provided dedicated Active Shooter response training at ED MD/APP faculty meeting

EUHM LEADERSHIP

From left to right: Hali Smith, Dr. Natalisia Terry, Dr. Jordan Kaylor, Jocelyn Montgomery, Dr. Phindie Erika Chow, Julius Rodillas





Pictured from left to right: Dr. Qasim Kazmi, MD, Assistant Medical Director and CDU Medical Director; Jan Gunn, PA, Lead APP; Cynthia Chac, Senior Clinic Operations Manager; Dr. Douglas Chesson, MD, Medical Director

CLINICAL SITES

Emory Johns Creek Hospital

While the year was uniquely challenging in many ways, we are proud to share that our department continued to excel.

EJCH CDU continued to function as best in the system for percentage of observation patients captured, percent discharged within 24 hours. Beyond that, our patient satisfaction scores rose to a new and sustained high as we strove to improve communication to our patients including the development of patient flyers to explain the role of CDU and share expectations with patients.

EJCH Emergency Department participated and led many successful initiatives. We collaborated with EMS agencies in the area on a quarterly basis to elicit and provide feedback in an effort to further strengthen our relationship and the shared care we provide to our community. We also co-led an inaugural EMS Cardiovascular Conference. In terms of patient safety and quality improvement, we carefully devised care plans for some of our most complex patients in an effort to provide them high quality and standardized care. This was a hospital-wide initiative in part led by the ED and met with tremendous support.

COVID RESILIENCY

During the first year of COVID, while everyone was still learning how to effectively manage surges in patient volume, our EJCH ICU was understaffed and asked EM to support by covering ICU shifts and to take care of critical care patients in the ED. Understanding the complexity of patient care, the change in scope of practice, and the timing of the surge (it was during January 2021), our EJCH ED team stepped up to be on-call and cover open shifts, balancing both ED shifts and ICU shifts.

Last year, we focused our attention on offering comprehensive support for our EJCH ED team. Last holiday season, we masked up and hosted our first in-person meeting that doubled as a Secret Santa gift exchange. We invited our full-time physicians and APPs at EJCH ED as well as any part-time or PRN providers to participate and were able to share fun facts and get to know one another as well as enjoy each other's presence outside of clinical work. More recently, we had the idea of ordering custom paper cards that would allow any EJCH provider to handwrite a message to a consultant that went above and beyond. We strive to maintain our strong relationship with other specialties and show our appreciation for their time and expertise. In a time where everything is digital or six feet apart, handwritten cards are unique and allow for a more personal connection. This project has been very well received throughout our hospital community.

EMORY JOHNS CREEK HOSPITAL EMERGENCY DEPARTMENT MISSION AND VISION

MISSION

To deliver exceptional emergency care to the community we serve and beyond, collaborate with all hospital specialties, administration, and prehospital services; advance groundbreaking science through community research, accelerate innovation as a part of Emory Emergency Medicine, and provide unmatched service to our patients.

VISION

The Emory Department of Emergency Medicine will be the national and international leader in prehospital and emergency care, known for compassionate patient-centered and family-centered care; distinctive and collaborative scholarly activities that advance the health and educational needs of the communities we serve; outstanding faculty, staff and trainees who embrace diversity and inclusion and promote interdisciplinary partnerships to advance the public's health.

SAFETY TASK FORCE & WORKPLACE VIOLENCE PREVENTION

As we see the rise of gun violence and mass shootings nationwide, we recognize that our Emergency Departments are a highly vulnerable location for potential violence. Emergency Rooms are at the crossroads of a limitless influx of patients often in emotionally charged and challenging personal situations. Our patient population is most diverse as our doors are open to anyone and everyone in the community. We collaborate with the local police force in medically clearing patients. While the pandemic has given rise to anxiety and depression throughout society, we see the impact on our patients and their mental health.

Taking a proactive approach to safety, we conducted a thorough safety assessment of our Emergency Room. We identified potential entry points and barriers to a lockdown which led to us increasing badge access doors that could shut in an emergency. In conjunction with our engineering team, we worked on a solution to reinforce the locking mechanism of our external EMS doors.

We participated in a tabletop discussion on active shooter training with hospital leaders, serving as the only physician representation in the discussion. As a team, we all devised a hospital-wide plan to address our vulnerabilities and provide training and education to all staff and providers, and planned an active shooter training session to be conducted in the hospital with participation from our local police agency.



Pictured from left to right: Dr. Qasim Kazmi, MD, Assistant Medical Director and CDU Medical Director; Jan Gunn, PA, Lead APP; Dr. Douglas Chesson, MD, Medical Director



CLINICAL SITES

Grady Memorial Hospital

Our vision is to be the nation's preeminent public academic emergency department, renowned for patient-centered care, precedent-setting research, and quality medical education.

COVID RESILIENCY

Since encountering our first COVID case in a returning traveler in January of 2020, the staff, advanced practice providers and faculty of the Grady Emergency Care Center have worked hard to provide outstanding patient care in the setting of the pandemic. Our department developed the new COVID emergency care protocols and educated over 300 physicians, nurses, and staff. We developed the first "hot" and "cold"

zones and isolation triage. Our team members participated in the development and implementation of a COVID ICU with ED patient critical care protocols, advanced respiratory regimens and patient self-proning. All of these programs were developed in the setting of an ever increasing volume in the Marcus Trauma Center and stark cuts to outpatient services.

In 2021, the department expanded COVID care by being the first ED in Atlanta to provide COVID vaccines as an option to all ED patients. We developed a temporary shelter program for patients facing domestic violence with limited access to shelter, and another program to house homeless COVID patients. We ran a COVID treatment area for patients with low acuity illness and reiterated the process as new drug information became available, preventing hundreds of additional hospitalizations in the community. We have paired with clinic partners in the development of a post-COVID and Long COVID care clinic that

FY 2023 GOALS

- >> Working with several committees in the hospital, the ED leadership made a concerted effort to improve and standardize the overall consult process
- >> Developed a process with ambulatory care partners to redirect low acuity patients out of the ED
- >> Working with hospital medicine to develop a new hospital observation space and optimize current CDU protocols
- >> Partnering with Primary Care, Trauma, and Medicine

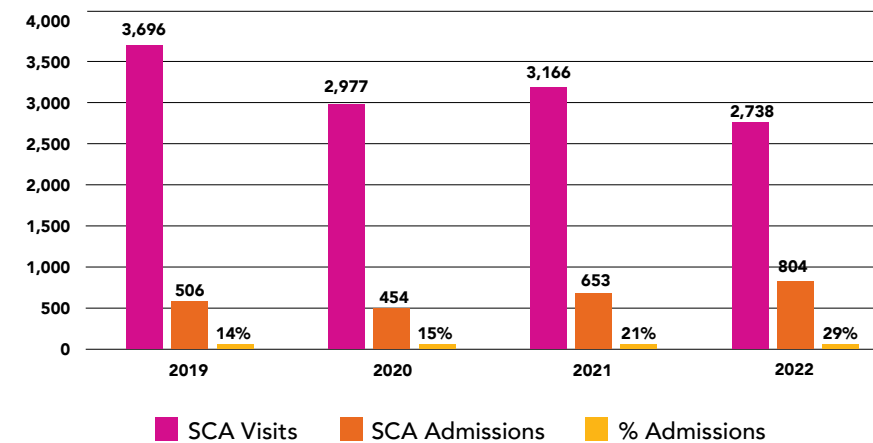
provides wrap-around services for patients experiencing a variety of health needs. We have spearheaded advocacy and awareness efforts both in the lay press and the greater medical community on the care of Long COVID patients. Most importantly, we have protected our physicians, staff and advanced practice providers by providing a safe care environment while navigating an often-austere supply chain.

MILESTONES

- With the pandemic response, the ED was able to create additional space with Zone 4
- The EM APP team assumed control of the Sickle Cell Clinic and Call Center. Ensured that faculty, residents, and advanced practice providers received education for obstetric and sickle cell care.
- Established a Respiratory Isolation Unit during Covid and a Complex Observation Unit
- The leadership team established an Admin phone line that is open 24/7 that can be used for outpatient clinic referrals to the emergency department.
- Worked with Hospital leadership to implement new safety initiatives in response to the shooting incident outside the hospital in June 2022.

INNOVATION SPOTLIGHT: SICKLE CELL CLINIC

In October 2021, Grady's Acute Care Sickle Cell Center transitioned from the Hematology/Oncology service to Emergency Medicine, under the direction of Associate Medical Director Dr. Elizabeth Iledare and Lead Advanced Practice Providers Meredith Stauch and Kevin Patel. The Sickle Cell Center at Grady is the only comprehensive sickle cell center in Georgia and was the world's first 24-hour acute care center of its kind. The area is staffed by advanced practice providers with attending oversight as needed. This new model aligns with emergency medicine's mission and expertise since the clinic patients present with acute pain crises and other emergent complaints. The advanced practice provider group is commended for enthusiastically expanding their knowledge base to include this vulnerable population. Patients are promptly evaluated upon arrival with minimal wait times and receive protocol-driven analgesia and care. Grady's hospital admission rate for vaso-occlusive crisis is 20-25%, well below the often-cited national average of 40% (Lanzkron et al., 2010). Sickle cell clinic renovations were completed in July 2022, providing a modern and inviting 11-bed space for the acute care needs of patients with sickle cell disease. We are grateful for the continued partnership of Dr. Morgan McLemore and his team, who remain close consultants for the care we deliver to the sickle cell population.



Lanzkron, S., Carroll, C. P., & Haywood, C. (2010). The burden of Emergency Department use for Sickle Cell Disease: An analysis of the National Emergency Department Sample Database. *American Journal of Hematology*, 85(10): 797-799. doi: 10.1002/ajh.21807

GRADY LEADERSHIP

Back row (Left to Right): Dr. Brooks Moore, Dr. Daniel Wu, Dr. Matt Wheatley, Kevin Patel; Front row (Left to Right): Denise Coletti, Alexis Lynch, Meredith Stauch, Dr. Liz Iledare, Tina Paulk



WORKPLACE SAFETY INITIATIVES

The incidents of workplace violence have increased since the beginning of the Covid-19 pandemic. The Emory Department of Emergency Medicine at Grady, led by its Workplace Violence Committee, is dedicated to ensuring a safe environment for our patients and staff. This past year, following an incident of gun violence just outside of the Grady ED doors, we have seen unprecedented engagement and progress in the arena of workplace safety. We have met monthly as a department, and with system leadership to develop plans and processes that ensure that we practice in a safe patient care environment. In the past year, we have employed new technology to bolster emergency communication in the event of workplace threats. We have installed signage to reinforce our commitment to a zero tolerance environment. We have increased our Atlanta Police Department presence and offered mass-casualty incident training. Additionally, the ambulance entrance doors have been permanently secured. We are in the process of instituting system wide de-escalation training, placing metal detectors at all points of entry, and remodeling our waiting room façade with bullet proof glass. We look forward to continued support as we aim to eliminate violence from our work environment.

EM SECTIONS

Medical Toxicology

Emory's Department of Emergency Medicine employs seven Emergency Medicine board certified Medical Toxicologists at Grady. At Grady, the section runs three different clinical operations, serves as the primary clinical and educational site for an ACGME accredited fellowship, provides medical back-up for the state of Georgia's only poison center, and participates in several international activities.

CONSULT SERVICE

The consultation service is available twenty-four hours a day, seven days a week to assist emergency physicians and admitting physicians in the evaluation and treatment of poisoned patients and patients with opioid use disorder. We participate in the care of over 600 patients each year. The Section members have unique knowledge and access to resources that are tremendously valuable in managing these patients.

OUTPATIENT CLINIC

The Georgia Occupational and Environmental Toxicology Clinic is the only outpatient clinic member of the Association of Occupational and Environmental Clinics within a 400-mile radius of Atlanta. Accordingly, we receive referrals to evaluate patients from all over Georgia and surrounding states. Services provided by the clinic include diagnosis and treatment of patients suffering from a wide variety of occupational and environmental diseases, poisonings, and exposures to hazardous substances.

We are an approved site for The World Trade Center (WTC) Health Program and provide medical monitoring and treatment for responders at the WTC and related sites in New York City, Pentagon, and Shanksville, PA, and survivors who were in the New York City disaster area.

GEORGIA POISON CENTER

Along with the Emory University Department of Pediatrics, the section members provide medical direction for the Georgia Poison Center. The poison center is one of the busiest poison centers in the United States receiving approximately 100,000 patient encounters per year. Medical direction is provided

twenty-four hours a day, seven days a week to cover the citizens of Georgia. The Poison Center plays a key role in Georgia's disaster planning, public health and provides ongoing education to Georgia healthcare providers.

ADDICTION MEDICINE SERVICES

The Addiction Medicine services provided by the Medical Toxicology section have continued to expand in the 2021–2022 academic year. In fall 2021, Dr. Joe Carpenter became the third member of our team to achieve board certification in Addiction Medicine. Our service more than doubled the number of bedside consults for opioid use disorder (OUD; 100 consults AY20–21, 214 consults AY21–22), and continued providing consultation for cases of refractory benzodiazepine and alcohol withdrawal. Our Medication for Alcohol and Opioid Use Disorders Treatment (MAOT) Clinic, the first of its kind at Grady, provides medication management, individual and group counseling, peer support, and linkage to services such as housing assistance, pre-exposure prophylaxis for HIV, and treatment for hepatitis C. It is one of the few programs in the state to provide OUD care for pregnant individuals.

In 2021, the clinic received an additional \$500,000/year grant from the Department of Behavioral Health and Developmental Disabilities to provide extended-release naltrexone to patients with alcohol use disorder, increasing Grady's ability to care for this population. Our clinic also partnered with providers in the Primary Care Center to transition a cohort of stable OUD patients to Primary Care for maintenance treatment. This permitted more capacity at the MAOT clinic for new patients, and provided an opportunity for residents in Primary Care to gain experience managing patients on medications for OUD.

HISTORY

The Grady Medication-Assisted Opioid Treatment (MAOT) clinic has been in operation since August 2017, funded by the Georgia Department of Behavioral Health and Developmental Disabilities and Fulton County. The MAOT clinic is operated by the Section of Toxicology in partnership with the Grady Adult Outpatient Program's (AOP) services. Patients in the MAOT clinic can access the full range of services offered by AOP, including intensive case management, psychiatric care, individual counseling, group therapy, and pharmacy assistance. The physicians who operate the clinic also provide inpatient and ED consultation services 24 hours per day, 7-days per week, to improve the care of patients with opioid use disorder while hospitalized and to facilitate their transition to outpatient treatment.

FACULTY

BRENT MORGAN
Section Chief, Fellowship Director

ZIAD KAZZI
Director Medical Toxicology Clinic,
International Program Director

ALAINA STECK
Director Medication Assisted Opioid
Treatment (MAOT) Clinic

MELISSA GITTINGER
Clerkship Director

JOE CARPENTER
Research Director

JONATHAN de OLANO
Attending Physician

EMILY KIERNAN
Attending Physician



INNOVATION IN TOX

The Pediatric Environmental Health Specialty Units (PEHSUs) are a national network of experts in the prevention, diagnosis, management, and treatment of health issues that arise from environmental exposures from preconception through adolescence. Region 4 (R4) of the PEHSU is based at Emory University and serves 8 states in our region, providing environmental health education and training to healthcare professionals, supporting families and the community through consultative services, and providing information on environmental health issues that affect children. Dr. Melissa Gittinger serves as the sole medical toxicologist for R4 and responds to the clinical consultations to the PEHSU, providing advice on evaluation and treatment of children's health problems related to environmental toxin exposures and suggests strategies on mitigation of these exposures. Furthermore, she has been involved in developing modules for healthcare providers on safer disinfecting practices during the COVID-19 pandemic, and the health risks of "forever chemicals." She has collaborated with national organizations including the Environmental Protection Agency and the CDC to educate the public on environmental intoxicants including lead poisoning, chemical exposures from sterilization plants, and chemical exposures in a community with a paper mill. She has also ensured our toxicology fellows have adequate opportunities for training in environmental toxicology, involving them in projects and consultations when appropriate.

INTERNATIONAL TOXICOLOGY PROGRAM

In 2021, the International Toxicology Program graduated its 21st and 22nd fellows. Since 2010, graduates of the program have worked to advance the care of poisoned patients worldwide and prevent exposure to chemicals and poisons in their communities. Moreover, the program continues to lead in providing telephonic toxicology consultations in Lebanon and Turkey through collaborations with leading academic partners in both countries. These collaborations benefit dozens of patients every month and result in important research that is consequential to poisoning prevention efforts and public health. Lastly, the International Toxicology Program continues to deliver impactful in-person and virtual clinical toxicology education in countries belonging to the World Health Organization Eastern Mediterranean Region, the Caucasus Region and Central Asia.

MEDICAL TOXICOLOGY HIGHLIGHTS



20 ABSTRACTS

presented at national meetings

- North American Congress of Clinical Toxicology
- American College of Medical Toxicology Annual Scientific Meeting
- American Society of Addiction Medicine
- IDWeek

11 MANUSCRIPTS PUBLISHED

in peer-review journals



Most notably an article in CDC's *Morbidity and Mortality Weekly Report* detailing an outbreak of hepatitis associated with an alkaline bottled water in Nevada and California

EMORY EMERGENCY MEDICINE
MEDICAL TOXICOLOGY IS

TOP 25%

of all 30 study sites with respect to
the number of subjects enrolled



5+ MANUSCRIPTS UNDER REVIEW

from section fellows and faculty



8 ACTIVE RESEARCH GRANTS & CONTRACTS

an increase from 4 in 2021

FUNDING RECEIVED
FROM MULTIPLE GOVERNMENT AGENCIES

- National Institute on Drug Abuse (NIDA)
- National Institute of Allergy and Infectious Diseases (NIAID)
- U.S. Environmental Protection Agency (EPA)
- U.S. Food and Drug Administration (FDA)



MEDICAL TOXICOLOGY MISSION

TO PROVIDE COMPASSIONATE AND INNOVATIVE

MEDICAL TOXICOLOGY CARE TO A DIVERSE

POPULATION. DEVELOP AND RESEARCH

INNOVATIVE, PREVENTIVE AND THERAPEUTIC

STRATEGIES IN THE FIELD OF MEDICAL

TOXICOLOGY. TO TRAIN DIVERSE CLINICIANS IN

THE CARE OF POISONED PATIENTS LOCALLY,

REGIONALLY, NATIONALLY AND INTERNATIONALLY.

EM SECTIONS

Prehospital and Disaster Medicine

Emory's Section of Prehospital and Disaster Medicine, founded in 2002, is committed to serving the community through a mission of service, education and discovery. The faculty provide medical oversight for 911 medical communications centers, fire-based emergency medical first responders and 911 advanced life support air and ground ambulance providers in the metro Atlanta area and other communities in Georgia.

Grady EMS is the 911-ambulance service for the City of Atlanta and has been in continuous operation since 1892. In the last calendar year, Grady EMS received 121,373 requests for service through its 911 communications center and transported 82,331 patients of which 6,018 were pediatric. Grady EMS, also operating in South Fulton County, works together with Metro Atlanta Ambulance Service, operating in Cobb County, to transport over 250,000 patients annually in the metro Atlanta area under the medical oversight of Emory Emergency Medicine physicians. Grady EMS also operates 911 services in a total of 18 counties in Georgia. In addition, they offer programs for critical care transport, high consequence infectious disease transport, event medicine, mobile integrated healthcare and a mobile stroke unit.

Fire first responder services for which the EMS faculty provide medical oversight include DeKalb County (pop. 772,470) and the municipalities of Sandy Springs (pop. 82,674), College Park (pop. 19,969), Decatur (pop. 19,332), and Emory EMS, the student managed service on the Emory University campus. Faculty also provide medical oversight for Air Life Georgia, which operates 5 air ambulances in the metropolitan Atlanta area, transporting over 1500 critically ill and injured patients per year. Section faculty lead emergency medical response planning and oversight for special events such as the Peachtree Road Race, the largest 10K in the world, and the Publix Atlanta Marathon. The Section also collaborates with the Atlanta Falcons for management of their Airway Management Physician program and with Medical Sports Group, for emergency medical response planning and support for the Super Bowl. Section

faculty also lead the Emory-Grady EMS Biosafety Transport Team, which supports the CDC and the Emory University Hospital Serious Communicable Diseases Unit for the management and transport of patients with high consequence infectious diseases. Demonstration program grants include a \$3 million dollar grant from the Department of Health and Human Services (HHS) Assistant Secretary for Preparedness and Response (ASPR) to lead the HHS Region 4 Southern Regional Disaster Response System. Also, a \$1.2 million grant was awarded by the Health Resources and Services Administration (HRSA) to develop a first-of-its-kind rural tele-EMS network.

The Section's teaching mission includes initial and continuing education for EMS professionals, through the Grady EMS Academy and the Emory EMS EMT/Advanced EMT programs. The Section also hosts an ACGME accredited post-graduate fellowship in emergency medical services, which provides training in emergency response systems and disaster preparedness to board prepared emergency medicine physicians. Section faculty are federally funded to disseminate education and training nationally for management of patients with high consequence infectious diseases and lead the EMS activities of the HHS funded National Emerging Special Pathogens Training and Education Center. The Section faculty supports the Department's educational mission by hosting the EMS rotation for the Emory Emergency Medicine Residency Program and the Emory School of Medicine's emergency medicine clerkship.

The Section of Prehospital and Disaster Medicine has a long history of collaboration on scholarly initiatives. The Section collaborates with the Emory Center for Critical Care to evaluate strategies for early recognition of sepsis to facilitate timely intervention for patients who benefit from "early goal directed therapy." The PRESS (prehospital severe sepsis) project is co-led by the Center for Critical Care and the Section of Prehospital and Disaster Medicine faculty. The Section also collaborates with Emory's Emergency

FUTURE GOALS

- » Continue to attract and retain top faculty
- » Further develop novel EMS delivery models
- » Explore global health opportunities
- » Further develop CARES to become the national out-of-hospital cardiac arrest registry
- » Continue leadership in high consequence infectious disease transport
- » Continue to contribute to national leadership within the EMS profession
- » Further cultivate national leadership in disaster preparedness and response
- » Seek opportunities to further develop the EMS research enterprise at Emory

Medicine Research Center and has facilitated investigations of the Neurological Emergencies Treatment Trials (NETT) network, specifically RAMPART (Rapid Anticonvulsant Medications Prior to Arrival Trial) and ProTECT III (Progesterone for Traumatic Brain Injury: Experimental Clinical Treatment). The Section supported the successful proposals for establishing the NIH funded Georgia StrokeNet and the Strategies to Innovate EmeRgENcy Care Clinical Trials Network (SIREN) contact hub in Atlanta. Section faculty are also supporting the Department of Defense funded "Prehospital Airway Control Trial (PACT) through the LITES network (Linking Investigations in Trauma and Emergency Services). They also support the National Institute of Neurological Disorders and Stroke (NINDS) funded "Pediatric Dose Optimization for Seizures in EMS (Pedi-Dose)" trial. Section faculty have also contributed to the development of interactive risk stratification tools (SORT - Strategy for Off-Site Rapid Triage) which were adopted by the CDC, HHS and Microsoft during the 2009 Pandemic, and rebooted for the COVID-19 pandemic.

The Section of Prehospital and Disaster Medicine is also home to the Cardiac Arrest Registry to Enhance Survival (CARES), which is a performance and quality improvement initiative that provides communities with data to compare patient populations, interventions, and outcomes related to sudden cardiac death. Since inception at Emory and implementation in Atlanta, the registry has grown to include 30 statewide registries and 45 additional communities in 16 states, representing a catchment area of more than 170 million people, 2300 EMS agencies and over 2500 hospitals. CARES has recorded over 820,000 cardiac arrest events in its registry.

The Section is closely aligned with the Emory Office of Critical Event Preparedness and Response (CEPAR) which reports to university executive leadership and serves as the center for Emory enterprise-wide planning for and coordinated response to catastrophic events. CEPAR partners with the community to address all hazards, including natural disasters, human-caused catastrophic events and public health emergencies.

Section faculty have provided consultation for state and federal agencies, in addition to the WHO, USAID and the NASEM on projects related to emergency response. Section faculty have regional and national prominence for their expertise in EMS and disaster preparedness and response.

FACULTY AND STAFF

Alexander Isakov, MD, MPH, Professor of Emergency Medicine and Section Director
Ingrid Bloom, MD, Assistant Professor of Emergency Medicine
Michael Carr, MD, Assistant Professor of Emergency Medicine
Senem Hinson, MPH, Director, Sections and Programs
Irfan Husain, MD, MPH, Assistant Professor of Emergency Medicine
Esther Hwang, MD, Assistant Professor of Emergency Medicine
Lekshmi Kumar, MD, MPH, Associate Professor of Emergency Medicine
Julio Lairer, DO, Associate Professor of Emergency Medicine
Bryan McNally, MD, MPH, Professor of Emergency Medicine
Wade Miles, NRP, Training Manager
Yuko Nakajima, MD, Assistant Professor of Emergency Medicine
Elijah Robinson, III, MD, Assistant Professor of Emergency Medicine
Cynthia Romero, MD, Assistant Professor of Emergency Medicine
Sam Shartar, MSN, RN, CEN, Administrator
Cary Sheahan, Fellowship Senior Program Coordinator
Arthur Yancey, MD, MPH, Associate Professor Emeritus

CARDIAC ARREST REGISTRY TO ENHANCE SURVIVAL (CARES)

ADVANCING RESUSCITATION CARE IN VIETNAM AN INTERNATIONAL COLLABORATIVE EDUCATIONAL EFFORT

On July 13, 2022, Dr. Bryan McNally, the Executive Director of CARES, wrapped-up the American Red Cross Instructor Trainer Course with 7 Hanoi based physicians. During the last few weeks in July, the Hanoi group also observed clinical care at Emory Healthcare and the Grady Health System spending time in the Emergency Department, ICU and EMS settings.

"My Hanoi colleagues understand the importance and responsibility associated with becoming the initial ARCv BLS instructor-trainer group in Vietnam. They are thankful and enthusiastic to be able to elevate the BLS standard in Vietnam and share the lessons learned in Atlanta with future instructors."

MISSION STATEMENT

The Section of Prehospital and Disaster Medicine is dedicated to the health and welfare of the community through a commitment to excellence in out-of-hospital care, disaster preparedness and injury prevention.

VISION STATEMENT

The Section of Prehospital and Disaster Medicine aspires to serve the community's health and preparedness for disaster through excellence in design and oversight of emergency medical services, the education of learners of all levels, and innovative research. The Section will serve as a resource of expertise at home and abroad.



Southern Regional Disaster Response System

HHS Region 4

MISSION STATEMENT

The SRDRS mission is to complement existing preparedness and response frameworks, and the partnerships represented by the Health Care Coalitions and the HHS Region 4 states. The mission is accomplished by integrating clinical and health care systems' operational expertise into existing preparedness and response structures at the local, state, and regional levels across HHS Region 4.

The Southern Regional Disaster Response System (SRDRS) builds on the successful collaboration of the Health Care Coalitions in Georgia and the HHS Region 4 states. The program is funded by a Health and Human Services Assistant Secretary for Preparedness and Response (HHS ASPR) grant awarded to Emory University/Emory Healthcare and its partners, the Georgia Department of Public Health, Augusta University Health System, and the University of Georgia Institute for Disaster Management. They are responsible for leading the collaboration with regional stakeholders.

The SRDRS aims to:



Augment horizontal and vertical integration of key stakeholders by championing public-private partnerships and aligning preparedness and response plans, policies, and procedures.



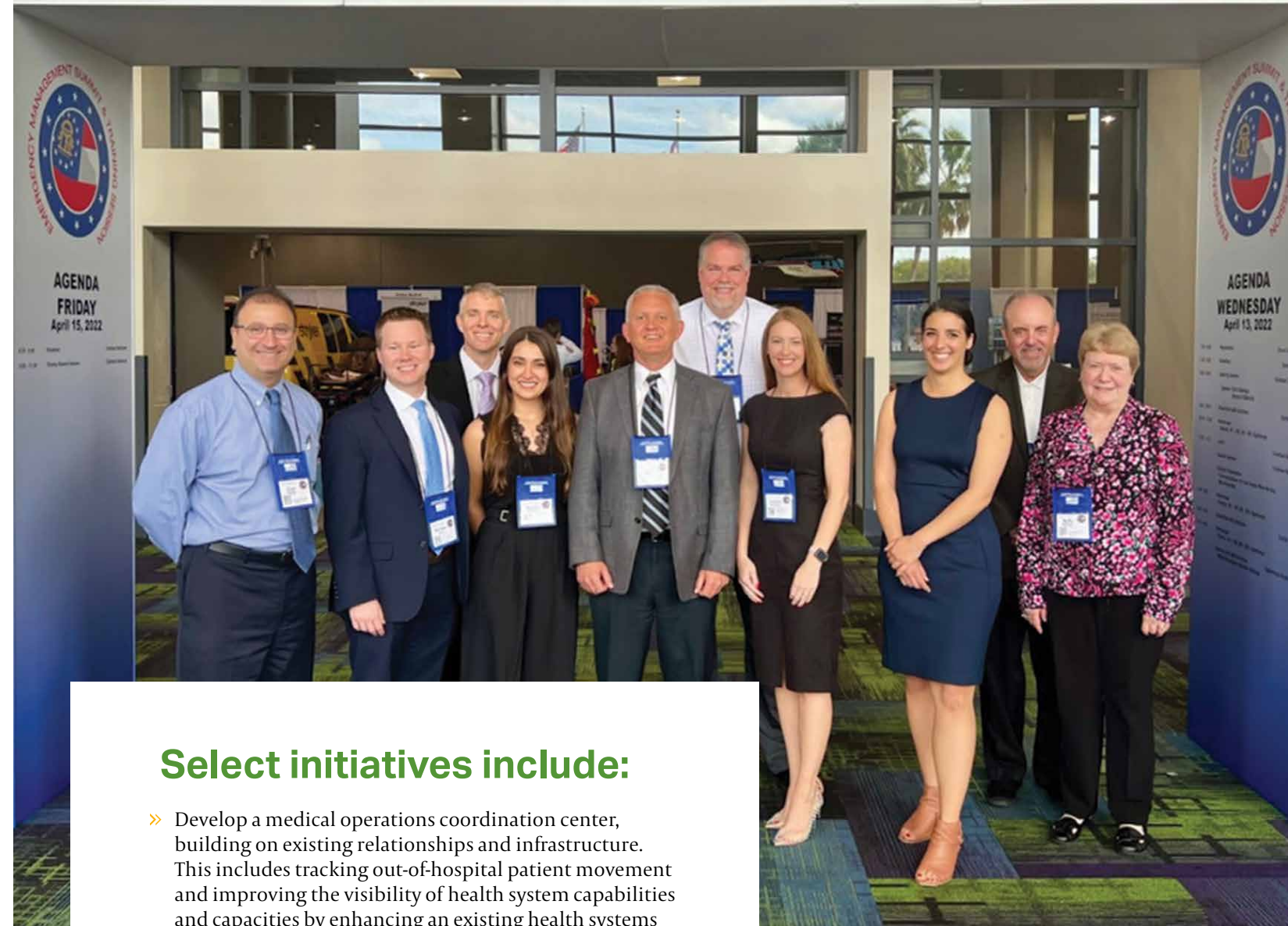
Improve bidirectional communication and situational awareness of the medical needs and issues of a chemical, biological, radiological, nuclear, and explosive (CBRNE) response between health care organizations and government partners.



Facilitate greater access to highly specialized clinical expertise and capabilities to improve medical surge capacity.

HHS/ASPR has also funded the Nebraska Medical Center, Massachusetts General and Denver Health and Hospital Authority. All four regional recipients will build or continue to expand systems that collaborate in disaster response to support clinical specialty care; align plans, policies, and procedures for clinical excellence in disasters; increase statewide and regional medical surge capacity; improve statewide and regional situational awareness; and develop metrics and test the regional system's capabilities.

Welcome to the 2022 Emergency Management Summit & Training Session



Select initiatives include:

- » Develop a medical operations coordination center, building on existing relationships and infrastructure. This includes tracking out-of-hospital patient movement and improving the visibility of health system capabilities and capacities by enhancing an existing health systems dashboard
- » Improving access to highly specialized clinical expertise in trauma, burns, and CBRNE mass casualty management
- » Expand the use of telemedicine systems, including Tele-Critical Care, Tele-Emergency/Observation Medicine, Tele-EMS, and teleconsultation services offered by the regional poison centers
- » Conduct a gap analysis for existing health care system preparedness and response structures to serve as the impetus for designing, conducting, and evaluating discussion and operations-based exercises

SRDRS EXECUTIVE COMMITTEE

- Alexander Isakov, MD, MPH**
Emory University - SRDRS Principal Investigator
- Curtis Harris, PhD**
University of Georgia Institute for Disaster Management - SRDRS Executive Director
- Senem Hinson, MPH**
Emory University - SRDRS Program Director
- Ziad Kazzi, MD**
Emory University - SRDRS Associate Medical Director
- Richard Schwartz, MD**
Augusta University Health System - SRDRS Medical Director
- Kelly Nadeau, RN, MN, EMHP**
Georgia DPH - Healthcare Preparedness Program
- Keith Wages**
Emory University - SRDRS Associate Program Director
- Lori Wood, DHA, MBA, MSEM, EMHP**
Grady Health System - Emergency Management Executive Director

EM SECTIONS

Emergency Ultrasound

Home to one of the first accredited Emergency Ultrasound Fellowships in the country

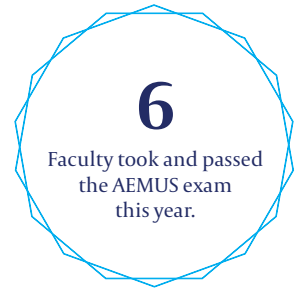


EDUCATION IS FRONT AND CENTER FOR OUR SECTION, BOTH WITHIN EMORY AND INTERNATIONALLY.

We train medical students through an intensive month-long elective, along with quarterly hands-on sessions coordinated with the medical student POCUS Interest Group. We have joined the medical school curriculum development committee in the hopes of creating a 4-year longitudinal curriculum for medical students similar to many other leading institutions. Dr. Tricia Smith also coordinates the wildly popular “Image of the Fortnight” series for Ultrasound cases.

For the new Emergency Medicine Residents, the team offers a full day ultrasound “bootcamp” during their first month and then each intern receives a month of twice weekly lectures and hands-on training with the ultrasound faculty and fellows. The hands-on training covers all the core ultrasounds they will need to work efficiently and effectively in the ED. Their education continues with resident class days which give our faculty an opportunity to get their creative juices flowing through fun simulated cases for the residents. Recently, the team hosted a Legends of the Hidden Temple themed escape room. Congratulations to team Blue Barracuda: Mustafa Rasheed, Kimberly

Dr. Laura Oh received a Bubble-Enhanced FAST exam for Hemodynamically Stable Blunt Abdominal Trauma (BEFAST) Grant from the Department of Defense to study contrast-enhanced ultrasound in blunt abdominal trauma. Drs. Oh, Helland, Guttman, Nix, Leumas, Sethi will be working on the grant. The goal is to enroll 267 patients.



Herard, Farina Shafqat, and Jessica Dunn. A special thank you to Gregg Helland, Kahra Nix, Pete Gutierrez (PEM faculty), and our fellows Jordan Leumas, Shawn Sethi, Ahmad Bakhribah, and James Statler (PEM US) for working on all of the details for this fun educational day.

We are also home to one of the first accredited advanced emergency ultrasound fellowships in the country which will allow our fellows to qualify for the Advanced Emergency Medicine Ultrasonography exam when they graduate. Our fellows learn advanced ultrasound exams which are integral to the overall education efforts of the section. They also learn about the administrative and leadership side of an ultrasound program in emergency medicine.

In addition to our residents and fellows, we also train Trauma and Critical Care Fellows, Nurses in PIV placement, and have begun training some of our APP leads to be EFAST superusers. They will be able to train new APP hires so they can work in the MTC.

Dr. Liang Liu is starting a grant funded Ultrasound Training Program in Mozambique that will include monthly didactics, virtual hands-on training using Butterfly Teleguidance, asynchronous educational materials, and image review. Drs. Helland and Sethi will be the first to travel there in October for in-person education. We hope to expand our international footprint with opportunities in Jamaica, Turkey, and Vietnam to offer our residents and advanced ultrasound fellows a chance to add a global health component to their education.



Team Blue Barracuda

EMERGENCY ULTRASOUND UPDATES

We have added six new ultrasound machines to three Emory ED sites which allows for improved physician access to machines in order to provide optimized and efficient medical care. With the purchase of Qpath, a middleware program designed specifically for POCUS programs, we will be able to integrate standardized documentation into the patient’s EPIC medical records along with access to the images for consultants and inpatient treatment teams. This access will decrease redundant scans and, in many cases, allow faster surgical or medical interventions based on the work the emergency physicians have already done at the bedside. Qpath will also improve operational excellence through quality and safety by integrating the Emory sites into the quality assurance structure already in place in our section. With the same machines, documentation, and QA across our sites, it will allow for systemization of patient care so the process is the same no matter what hospital our physicians are working in that day, or which hospital our patients seek care from.

EM SECTIONS

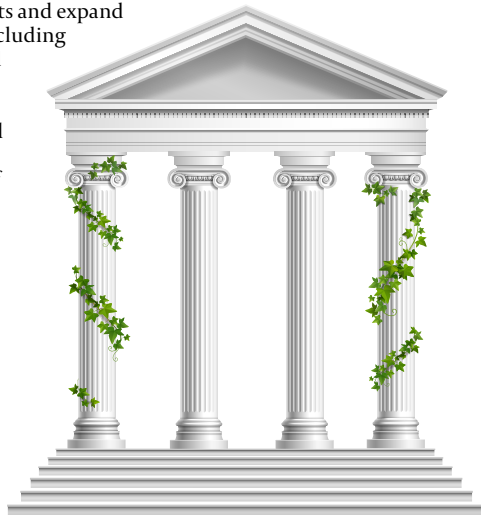
Global Health

The mission of Global Health in Emergency Medicine Section (GHEMS) is to build emergency medicine capacity and preparedness around the world through development of sustainable, bilateral educational partnerships that provide and promote the training of healthcare providers in emergency medicine.

4 PILLARS OF EXCELLENCE

I. EMERGENCY CARE CAPACITY DEVELOPMENT

Continue to develop international products and expand reach of offerings at collaborating sites, including international toxicology short courses and consultation, Collaborative Advanced Trauma Care, special pathogen and chemical preparedness courses, and global nursing short courses. Continue to foster specialty development through support of conferences at collaborating institutions.



III. RESEARCH

Foster sustainable grant application development for faculty in section, with support of Departmental research faculty. Support and strengthen faculty research, including through encouraging and supporting publication and conference presentation.

II. EDUCATION

Recruit robust, complementary international faculty who can grow post graduate medical education offerings including the eventual establishment of a global EM fellowship. Continue to foster resident development of global health interests through Global Emergency Medicine Pathway and the School of Medicine's GLOBE pathway.

IV. BILATERAL PARTNERSHIP

Establish a funded exchange program mechanism for residents or faculty from collaborating sites to visit, engage, and collaborate with EM colleagues at Grady or Emory. Continue to collaborate with Grady Nursing, Grady Trauma, Emory Surgery, and others on programming.

Section played a pivotal role in the creation of the Office of Global Health and Equity (GLOBE) within the School of Medicine including section member Dr. Anna Yaffee serving as Director of Global Health Education within the Office. Launched the GLOBE curriculum in November - a multidisciplinary graduate medical education global health curriculum at the SOM level, which our Global EM Pathway Residents will have the opportunity to participate in.



\$50,000

approximately disbursed to an additional 3 section seed grants for a total of 5 projects



3

resident pathway members graduated for a total of 4 resident graduates of the pathway



1

resident accepted to the upcoming year's Global Health Resident Scholar's Program

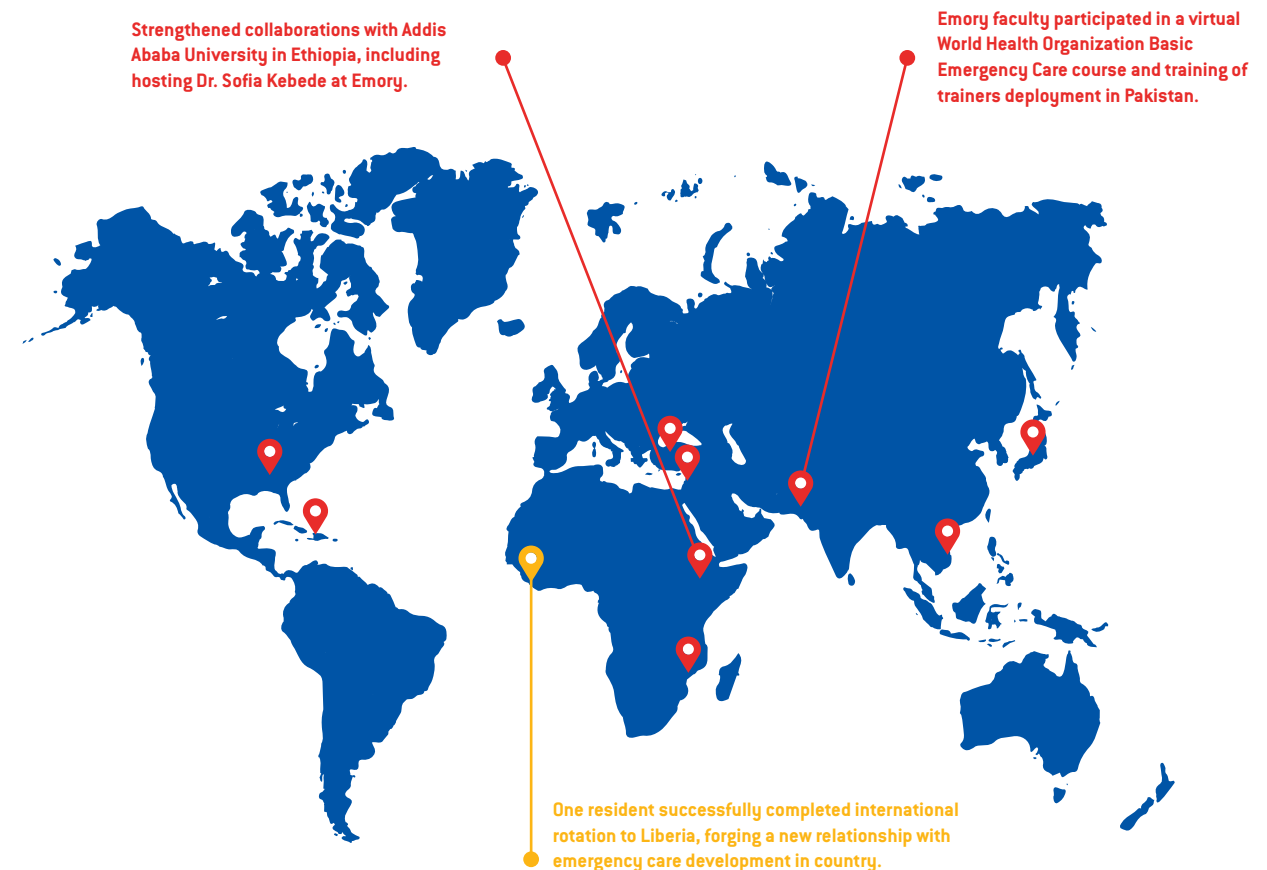


Multiple

faculty members with leadership roles in the ACEP international section/Ambassador conference

INNOVATION IN GLOBAL HEALTH

GHEMS encourages the development of collaborative, bilateral relationships that will lead to impactful long-term partnerships. During the past two years, the GHEMS has been able to accomplish this through the distribution of seed grant funds for global health projects, including funding trauma team training in Ethiopia, a toxicology telehealth initiative in Turkey, capacity building in Liberia, ultrasound training in Mozambique, and emergency care training in Haiti. We hope with these new projects we will continue to strengthen these partnerships to help build emergency care capacity.



Faculty members successfully deployed grant funded programs in Pakistan and Ethiopia while continuing work in Lebanon, Japan, and Vietnam.

The two grant funded initiatives deployed in Pakistan and Ethiopia this past fiscal year focused on Collaborative Advanced Trauma Care. The initiatives are training emergency medicine physicians, surgeons and emergency nurses in trauma team development and trauma team care.

Our vision is to be recognized as a leader in the field of global emergency medicine, through the creation of long-lasting bilateral relationships and sustainable programs to strengthen emergency medicine education, research, and care throughout the world, while providing opportunities for scholarly advancement and premier education for Emory EM faculty, residents, APPs and our global partners. In addition, the development and advancement of the GHEMS is expected to attract competitive faculty and resident applicants which would further increase Emory's reputation as a "Best Place to Work" for future well-rounded and inclusive leaders in EM.

EM SECTIONS

Observation Medicine

Observation services are provided to select emergency department patients specifically “to determine their need for inpatient admission.”

While observation care can be provided anywhere in a hospital, the best setting for these patients is in a protocol driven emergency department observation unit. Just as a critically ill inpatient is best managed in a critical care unit, an observation patient is best managed in an observation unit. At Emory, these units are called “Clinical Decision Units.” The Emory Observation Medicine team has been a national leader in providing best practices, quality care, innovation and discovery in this growing field of medical care.

CLINICAL DECISION UNITS

EMORY UNIVERSITY HOSPITAL	EMORY UNIVERSITY MIDTOWN HOSPITAL	EMORY JOHNS CREEK HOSPITAL	GRADY MEMORIAL HOSPITAL
MEDICAL DIRECTOR Dr. George Hughes	MEDICAL DIRECTOR Dr. Michael Ross	MEDICAL DIRECTOR Dr. Qasim Kazmi	MEDICAL DIRECTOR Dr. Matthew Wheatley
13 beds	16 beds	10 beds	20 beds
2,555 patients	3,188 patients	1,139 patients	3,820 patients

NATIONAL RECOGNITION

» The Emory Emergency Medicine Observation Medicine section is recognized nationally for service, leadership, and cutting edge innovation.

Dr. Wheatley serves on the National Center for Medicare and Medicaid Services Hospital Outpatient Panel Advisory Panel as the Chair of the Observation and Visit Committee. This advises CMS on all outpatient payment policy issues for the country. He also serves as Chair of the American College of Emergency Physicians Observation Medicine Section. Dr. Wheatley and Dr. Osborne co-chair the largest annual Observation Medicine Sciences and Solutions meeting, which draws experts from around the country annually. Dr. Ross served on the American College of Cardiology/American Heart Association 2022 Guidelines Writing Committee for Chest Pain. The section introduced a new cardiac biomarker, high sensitivity troponin, to Emory. They developed a testing protocol to be used in the emergency departments and hospital that improved the ability to identify or rule out heart attacks more accurately and rapidly.

22,926

OBSERVATION PATIENTS ARE TREATED ANNUALLY. THIS REPRESENTS

29%

OF ALL PATIENTS WITHIN THE FOUR LEGACY EMORY HEALTHCARE HOSPITALS THE EMORY DEPARTMENT OF EMERGENCY MEDICINE CDUs ARE THE LEADING PROVIDER OF CARE FOR THOSE PATIENTS MANAGING

59%

OF ALL OBSERVATION PATIENTS ANNUALLY THE CDUs MANAGE PATIENTS MORE EFFICIENTLY THAN OCCURS IN AN IMPATIENT BED

16 HOURS

VERSUS 35 HOURS AT A SIGNIFICANTLY LOWER COST PER CASE (\$1,840), AND WITH LOWER INPATIENT ADMISSION RATES

17%

VERSUS 27% FOR EMORY HEALTHCARE HOSPITALS, THESE EFFICIENCIES LEAD TO ANNUAL COST SAVING OF

\$24,773,533

AND OPENED

10,526

BED DAYS

These units allowed observation patients to receive the care that they needed more efficiently, so they could return to normal living sooner. They allowed Emory to use these cost savings to invest in the types of healthcare innovations that draw patients to Emory. They created much needed inpatient bed capacity for patients needing the unique specialty services that Emory provides to our community. The Emergency Department CDUs are part of the fabric of what makes Emory unique.

EDUCATION

Undergraduate Medical Education

The Undergraduate Medical Education section is committed to excellence in education for all our learners and in all settings. We have outstanding faculty that excel at bedside, didactic, and small group teaching. These faculty lead students through patient care at high volume and high acuity clinical sites and are embedded into the Emory School of Medicine education leadership.



Residents conducting simulation training

In addition to providing high-quality education to our Emory students, we are also proud to host students from multiple institutions for visiting rotations. This year, 25 students from 22 different institutions from across the country will join 11 Morehouse SOM students and Emory's Class of 2023 in the one-month emergency medicine clerkship between June and October of 2022. We continue to evolve and improve our clerkship education with the recent addition of sessions on EKGs in the ED, a podcast and follow-up discussion regarding anti-racism in healthcare, a toxicology session specifically designed for M4s and led by an expert in the field, more hands-on procedures in the simulation lab, and the addition of social determinants of health focused OSCE cases.

Our department's efforts to expand education around emergency medicine extend into the pre-clinical years with the Thrills and Spills elective. This elective is offered annually to current second-year MD students and is consistently a sought-after placement. We focus on practical procedural and clinical skills, among them suturing and how to call a consult, with the goal of not only introducing the students to emergency medicine, but also providing each student with useful tools for the rest of

their education and beyond, regardless of which specialty they ultimately choose.

SIMULATION TRAINING

The UME section continues to utilize the Emory Center for Experiential Learning (ExCEL Simulation Center) to enhance our students' education. Each rotation, students care for several critically ill or injured simulated patients in the simulated environment. They work in teams and use their clinical reasoning and judgment to independently manage patients from undifferentiated presentation to final disposition, then review their performance of the cases and discuss key principles of emergency patient management.

COVID-19 RESPONSE

Like most emergency departments, we've had to remain flexible and adapt to the changes brought on by COVID-19 and overcrowding in the emergency department. As an education leadership team, we have made improvements as needed to maintain the quality of education for our students despite operational challenges in the clinical space.



MENTORING FOR UNDER-REPRESENTED STUDENTS IN EMERGENCY MEDICINE

Designed by Dr. Rahel Gizaw

MUSE ROTATION

Beginning in the summer of 2022, Dr. Maurice Selby and the EDIC leaders created the MUSE (Mentoring Under-Represented Students in Emergency Medicine) rotation. The MUSE program is a novel mentoring program in which third and fourth year medical students are paired with faculty and resident mentors. The program predominantly features the traditional dyadic mentoring model, and these interactions are supplemented with peer and group mentoring provided through MUSE Mashups in which faculty, residents, and the student participants come together to partake in a quarterly virtual conference.

Fourth year students are guaranteed a visiting rotation/clerkship at Emory in the Department of Emergency Medicine as well as a post-rotation interview with MUSE Core Faculty and Residency Leadership to discuss interview strategies

and best practices. Finally, the students are offered an interview for the Emory Emergency Medicine Residency Program. The MUSE Leadership includes Maurice Selby, Director of Muse, Molly Melham, Faculty Assistant Director of MUSE, and Terrell Jones, Resident Assistant Director.

Many of our Emergency Medicine Associate Providers serve as faculty and clinical preceptors for the Emory University PA and Emergency NP programs as well as the Morehouse School of Medicine PA program. APP students from these programs as well as visiting APP students have completed clinical rotations at the various Emory Emergency Medicine clinical sites. As of July 2022, there have been a total of 35 APP students to complete clinical rotations through the Grady ECC. Our visiting NP students include RN's from Emory and Grady clinical sites who are in the process of completing their NP clinical requirements. APP students have opportunities to learn with APP preceptors in the various clinical settings the emergency department offers, including urgent care, observation unit, trauma, and the emergency sickle cell unit.

For the coming year, we are actively brainstorming innovative educational programs for the clerkship including social determinants of health, ethics in the emergency department, and the integration of an interprofessional shift, among others.



Graduate Medical Education

EMORY EM FELLOWSHIPS

- » Administrative
- » Health Policy
- » Innovation and Discovery
- » International Medical Toxicology
- » Medical Education
- » Observation Medicine
- » Ultrasound

ACGME Fellowships

- » Emergency Medical Services (EMS)
- » Medical Toxicology



Follow the QR code to learn more on the Emory EM website about the fellowship opportunities

Emergency Residency Program

Emory's EM Residency is nationally recognized as an outstanding training institution for Emergency Medicine and has strength in its four pillars with an overriding theme of diversity and inclusion.

The diversity of the Emory EM Residency showcases the mission/vision and values of the program, the Department, and the School of Medicine. We offer our residents the experience to be trained at a Level 1 trauma center with high patient volumes and clinical diversity. We have deeply engaged and committed residency leadership that works with our faculty to mentor residents and help them identify opportunities for state and national emergency medicine organizations. During COVID, there was strong support from the Emory EM leadership and team for resident safety and wellness. We are a family at Emory EM and truly look out for each other especially in addressing any concerns among the team.

The Emory EM Residency stands out among training programs:

Our people and our diversity. We are a diverse EM residency program with residents and faculty members from all walks of life. We know that our diversity is a strength, and we truly value it.

Our patients. We are proud and honored to be the emergency medicine physicians for a large and vulnerable population.

Our clinical sites. Our training takes place at the county, academic, and community hospitals. Our home base is a historical county hospital that is a level 1 trauma center and the stroke referral center in the Southeast. We also work at a quaternary referral site, a community site, and the Children's Hospital of Atlanta for our pediatric rotations. A combination of all of these sites and the faculty that comes with them prepare for all different clinical settings.

Academics. We have a strong research program that spans cutting edge sepsis and stroke research, to violence prevention and gun violence research to social determinants of health research.

Atlanta. Sunny, walkable, excellent food options including amazing BBQ, and great hiking.

Residency Focus Areas:

- » Patient Care and Preparation for Board Certification
- » Research and Scholarly Projects
- » Service to the Community
- » Advocacy at the Capital
- » Wellness and Resiliency

Residency Pillars:



MISSION

The Emory Emergency Medicine (EM) Residency Program actively works to recruit, develop, and train the next generation of diverse Emergency Medicine leaders with the skills and expertise to provide outstanding patient care, engage in cutting edge research, seek opportunities for service and advocacy, and invest in personal and professional wellness and resiliency techniques.

VISION

Emory EM will be the leading academic Emergency Medicine program in transforming health and healing, through education, discovery, prevention, and care. To remain ethically engaged and a diverse community, whose members work collaboratively for positive transformation.

Program Director

Melissa White

Associate Program Directors

Matthew Gittinger
Anwar Osborne
Jeffrey Siegelman
Bradley Wallace

Staff Members

Sharon Ashley
Rikka English
Lynn Hansen
Simone Pitts

FACULTY ENGAGEMENT & ADVANCEMENT TEAM (FEAT)



Message from Dr. Sheryl Heron

Vice Chair of Faculty Equity, Engagement and Empowerment

Our Faculty Engagement and Advancement Team (FEAT), which consists of a 9-member team of faculty and staff, is designed to support and encourage all EM faculty as they grow and develop in scholarship, teaching, and service in pursuit of their career goals and interests. This is foundational to the faculty's growth as individuals and as team members. We continue to grow within our respective clinical, educational, and administrative domains with leadership noted by our faculty in Undergraduate and Graduate Medical Education. This includes 4 faculty members out of 32 who serve as one of the School of Medicine's Small Group advisors as well as 3 faculty members who hold Dean level positions. The intentionality is grounded in the faculty life cycle which begins with recruitment through their life cycle in our department. Information for our new to existing faculty has been highlighted in the creation of the Faculty Advancement tab on our department's website.

Foundational to this work has been the advocate program which pairs faculty with senior leaders to assist the faculty members to define their niche areas with an intention to thrive by not just meeting the metrics of citizenship and professionalism. This is anchored in identifying areas of strength and passion for faculty and guiding them to pursue their interests at the local, regional and national levels.

With a lens toward equity and inclusion, our advancement, promotion, and tenure committee was refined to ensure gender representation as well as representation across our clinical sites. Guided by the content of the advocate curriculum, faculty have been clearly directed on how to prepare for promotion as well as access

faculty development programs within the department and School of Medicine to assist with successful promotion. This strategy has led to a doubling of our faculty members being considered and/or promoted, moving from 2 to 4 to 8 faculty for the past 3 years with a 100% success rate. Noteworthy, in the past 2 years of those promoted to Associate Professor, 50% were women. This would not be possible without the dedicated efforts and attention of the chair of our awards committee and the faculty advocates who have helped nominate and support the faculty in their attainment of awards. In addition, the faculty input is important as we move forward with the refinement of our faculty development initiatives which, while there was improved attendance in the ZOOM format, will be tailored to be more prescriptive based on the current state of EM and the growth in numbers of our mid-career faculty.

4 out of 32 faculty members serve as School of Medicine Small Group advisors



“Guided by the content of the advocate curriculum, faculty have been clearly directed on how to prepare for promotion as well as access faculty development programs within the department and School of Medicine to assist with successful promotion.”

3 faculty members hold Dean-level positions
2x growth in faculty members considered and/or promoted

IN THE PAST TWO YEARS
50% of faculty members promoted to Associate Professor were women

CLASS OF 2025

EMERGENCY MEDICINE RESIDENCY PROGRAM

ROHIT ANAND CASE WESTERN RESERVE UNIVERSITY SCHOOL OF MEDICINE	DANIELLE ANDREWS LOYOLA UNIVERSITY STRITCH SCHOOL OF MEDICINE	ESTER BHEBHE MEDICAL COLLEGE OF GEORGIA AT AUGUSTA UNIVERSITY	REKHA CHANDRA BOSTON UNIVERSITY SCHOOL OF MEDICINE	CASIDY CUNINGHAM UNIVERSITY OF NEW ENGLAND COLLEGE OF OSTEOPATHIC MEDICINE
SUMEET DIXIT RUSH MEDICAL COLLEGE OF RUSH UNIVERSITY MEDICAL CENTER	MCKENZIE EAKIN STANFORD UNIVERSITY SCHOOL OF MEDICINE	EMILY GEYER OHIO STATE UNIVERSITY COLLEGE OF MEDICINE	SHAYAN GHIAEE SIDNEY KIMMEL MEDICAL COLLEGE THOMAS JEFFERSON UNIVERSITY	KHIEM HOANG UNIVERSITY OF TEXAS SOUTHWESTERN AT DALLAS SOUTHWESTERN MEDICAL SCHOOL
ANTONIO JACKSON THE UNIVERSITY OF TOLEDO COLLEGE OF MEDICINE	KIERAN KRISTENSEN EMORY UNIVERSITY SCHOOL OF MEDICINE	KELLIE LEVINE CASE WESTERN RESERVE UNIVERSITY SCHOOL OF MEDICINE	RACHEL MacASKILL BAYLOR COLLEGE OF MEDICINE	JAMES MWANGI MEHARRY MEDICAL COLLEGE
BROOKS REIBER VIRGINIA COMMONWEALTH SCHOOL OF MEDICINE	MEHRNOOSH SAMAEI TEHRAN UNIVERSITY MEDICAL SCIENCES BROWN UNIVERSITY	DUYEN VO UNIVERSITY OF MIAMI LEONARD M. MILLER SCHOOL OF MEDICINE	GARRETT WALLACE EMORY UNIVERSITY SCHOOL OF MEDICINE	

NEW STAFF, PHYSICIANS, FELLOWS, AND ADVANCED PRACTICE PROVIDERS

New Staff

Elizabeth Ayangunna
Tiera Bates
Mia Bottcher
Galileu Carvalho
Jessica Garcia
Leah Goldstein
Harriet Howlett-Smith
Dylan Hurley
Courtney Keeler
Meredith Kelly
Erika Perricone
Lynn Simone Pitts
Bociana Plaisimond
Floyd Stern IV
Stephanie Verna
Jill Woodard

New Physicians

Dr. Megan Boissonneault
Dr. Randi Connor-Schuler

Dr. Sagar Dave
Dr. John Diehl
Dr. Rahel Gizaw
Dr. James O'Shea
Dr. Jawad Shahid, EJCH
Dr. David Sugerman
Dr. Jamal Taha

New Fellows

Emergency Medical Services (EMS)
Dr. Kelli Robinson
Dr. Jessica Walsh O'Sullivan

International EMS
Dr. Phudit Buaprasert

Medical Education

Dr. Jordan Beau
Dr. Camille Beecher
Dr. Nkele Davis

Toxicology

Dr. Salman Ahsan
Dr. Liz Eneida Rivera Blanco
Dr. Christy Thao-Phuong Hallett
Dr. Zachary Illg
Dr. David Kuai
Dr. Daniel Noguez
Dr. Andres Guzman-Soto
Dr. Kyle Suen
Dr. Nicholas Titelbaum

Ultrasound

Dr. Jordan Leumas

International Toxicology

Dr. Afra Alsuwaidi
Dr. Ahmad Hassan Bakhribah
Dr. Fatma Al-Balushi
Dr. Hassan Al Balushi
Rita Farah, PharmD
Dr. Suad Al Sulaimani

New Advanced Practice Providers

Emory University Hospital
John Dobrasz, PA
Theresa Groves, NP

Emory University Hospital Midtown
Jeffery Stebbins, PA

Emory Johns Creek Hospital
Autherine Abiri, NP
Sara Hofstra, PA
Craig Krupansky, PA

Grady Memorial Hospital
Dale Bowers, NP

Antun Grancaric, PA
Whitney Jones, PA
Jessica Menke, NP
Ngozi Nwaise, NP
Ron Perets, NP
Arden "Ari" Tomassetti, PA
Thomasine Thomas, NP
Paula Tucker, NP
Kenya Watson, PA
Ashley Wilson, NP

International Toxicology

Dr. Afra Alsuwaidi
Dr. Ahmad Hassan Bakhribah
Dr. Fatma Al-Balushi
Dr. Hassan Al Balushi
Rita Farah, PharmD
Dr. Suad Al Sulaimani



Remembering

Dr. Leon Haley

On July 24, 2021, Dr. Leon Haley Jr., CEO of UF Health Jacksonville, tragically passed away in an accident. He was a dear friend, mentor, colleague, role model, and as Dr. Sheryl Heron said, "he was a giant in Emergency Medicine...he had an enormous impact on our community, notably as a role model for African-American men to pursue the highest level of attainment in academic medicine."

Dr. Haley came to Emory Emergency Medicine in 1997 as the Medical Director of the Grady ECC. He served as the Chief of Emergency Medicine at Grady and in 2013, he became the Executive Associate Dean for Emory at Grady Memorial Hospital. He was recruited in 2017 to serve as Dean of the College of Medicine at the University of Florida, Jacksonville and the following year he was asked to serve as the CEO of UF Health. He served on the Board of the Society of Academic Emergency Medicine (SAEM) and on the Board of the American Board of Emergency Medicine (ABEM). Dr. Haley earned his bachelor's degree from Brown University and his medical degree from the University of Pittsburgh School of Medicine.

In October 2021, the Emory University School of Medicine named the Distinguished Professor Chair for the Emory Executive Associate Dean for Grady Affairs in honor of Dr. Leon Haley, Jr. Dr. Haley's footprint began in Emergency Medicine and his leadership within our department and Emory University's School of Medicine, for almost 2 decades, cannot be underscored. He was a dear friend and mentor to many in the Emory University SOM Department of Emergency Medicine, and the countless residents, trainees, and staff at Grady Memorial Hospital who benefitted from his council.

He will always be remembered in the Emory University Department of Emergency Medicine for his compassion, advocacy, clinical excellence, friendship, and professionalism. We are fortunate as a team to have spent time with him (virtually) through the Emory Department of Emergency Medicine's Dr. Arthur Kellermann Grand Rounds Lecture. During the March 2021 lecture, Dr. Haley addressed the state of healthcare today, activities, and interventions before and after medical care, environmental challenges, social determinates of health, and the roll of Emergency Medicine in all of this. The recording of his presentation can be seen [here](#). The UF Health Jacksonville tribute to Dr. Leon Haley can be seen [here](#). We will always honor and remember his legacy here at Emory.

Awards & Recognition

Significant Emergency Medicine Grants

Dr. Alex Isakov in Emory EM's Preshospital and Disaster Medicine Section leads a one year \$3 million grant for the 4th Regional Disaster Health Response System site. *The U.S. Department of Health and Human Services' Office of the Assistant Secretary for Preparedness and Response (ASPR)* selected Emory University to lead the latest system site. You can learn more about the grant [here](#). To address gaps in health care delivery during disasters, ASPR developed a Regional Disaster Health Response System (RDHRS). The RDHRS is a tiered system that builds upon and unifies existing assets within states and across regions that supports a more coherent, comprehensive, and capable health care disaster response system able to respond to health security threats. SRDS recently launched their website at the web address [SRDRS4.org](https://www.srdrs.org). SRDRS will build on the successful collaboration of the Health Care Coalitions in Georgia and the HHS Region 4 states. SRDRS intends to expand into the other regional states through thoughtful integration with the Region 4 Poison Centers and a coalition of Region 4 Academic Healthcare Systems. https://news.emory.edu/stories/2021/10/aspr_regional_disaster_health_response_system/index.html

Dr. Rishi Kamaleswaran received his recent NIH RO1 grant on Sepsis Physiometers for Appropriate Risk Knowledge of monitored patients in the ICU (SPARK-ICU). Kamaleswaran Rishikesan, Coopersmith CM, Buchman Tim, Clermont G, Pinsky MR, Clifford, Gari, Inan, O. Dr. Kamaleswaran's lab focuses on developing novel machine learning methods and applications in the areas of sepsis, organ dysfunction (such as cardiac arrhythmia and neurologic disorders). https://reporter.nih.gov/search/jnLkGBDZZEqGNS_UyMzSQ/project-details/h0295725

Dr. Emily Kiernan (a graduate of the Emory EM research-based Ideas Scholars program), was awarded a four-year \$2 million HRSA grant titled Expanding Rural Access to Opioid Use Disorder Treatment Utilizing Medical Toxicologists and the Georgia Poison Center to Facilitate Emergency Department- and Telehealth-Based Medication Initiation and Linkage to Care" to implement tele-addiction services in rural counties in the state of Georgia. It is through the Rural Communities Opioid Response Program - Behavioral Health Care Support (<https://www.hrsa.gov/grants/find-funding/HRSA-22-061>).

Dr. Laura Oh received a Bubble-Enhanced FAST exam for Hemodynamically Stable Blunt Abdominal Trauma (BEFAST) grant from the Department of Defense to study contrast-enhanced ultrasound in blunt abdominal trauma. The grant includes Emory EM physicians Laura Oh, Greg Holland, Joshua Guttman, Kahra Nix, Jordan Leumas, and Shawn Sethi. Their goal is to enroll 267 patients by end of next year.

Dr. Jonathan Rupp received a NHTSA grant working with colleagues at the University of Michigan to develop a new paradigm for reconstructing motor-vehicle crashes. In this paradigm, they will leverage their past work to automate the development of crash-specific computational models of vehicle interiors and subject-specific models of vehicle occupants to

dramatically reduce the time needed to reconstruct a crash. This reduction represents a major advancement in the field taking what previously required several weeks and reducing it to a couple of hours.

Dr. Jonathan Rupp also received a grant from the Georgia Governor's Office of Highway Safety to conduct a statewide observational survey to measure seatbelt and child restraint use rates in passenger vehicles.

Dr. Amy Zeidan's proposal on "Work-Related Injuries Among Immigrant Populations: Understanding the Prevalence and Developing Hospital Based Interventions" was selected by the Emory Global Health Institute for a 2022 EGH Faculty Seed Grant. EGH Faculty Seed Grants are for Emory faculty members to conduct multidisciplinary global health research or programmatic work that leads to improvement in individual or population health through sustainable and multidisciplinary partnerships.

Prehospital and Disaster Medicine Grants

Centers for Disease Control and Prevention, "Protocol Development and Hospitalization of CDC Workers with Potential Exposure to A Serious Communicable Disease"

Department of Defense, "Prehospital Airway Control Trial (PACT)"

Department of Health and Human Services Assistant Secretary for Preparedness and Response and Centers for Disease Control and Prevention, "National Ebola Training and Education Center"

Department of Health and Human Services, Assistant Secretary for Preparedness and Response, "Southern Regional Disaster Response System (SRDRS)"

Health Resources and Service Administration (HRSA), "Rural Tele-EMS Network Project"

National Institute for Environmental Health Sciences, "Worker Training Program"

National Institute of Neurological Disorders and Stroke (NINDS), "Pediatric Dose Optimization for Seizures in EMS (Pedi-Dose)"

2022 Graduation & End of Year Awards

EM Faculty Teacher of the Year
Randy Wallace

EM Faculty Teacher of the Year
Randy Wallace - Grady Memorial Hospital
Geoffrey Kelly - Emory University Hospital Midtown
Zander Prewitt - Emory University Hospital

EM Pediatric Faculty Teacher of the Year
Pete Gutierrez

EM Off-Service Teacher of the Year
Randi Smith

PGY2 Clinical Excellence Award
Marshall Howell

PGY3 Clinical Excellence Award
Michael Franczak

Grady Mindset Award
Nabil Abazaid

Emory Excellence Award
Nabil Abazaid
Guen Gwanyalla
Jordan McQuilkin

Highest In-Training Examination Score Award
Daewoong Kim - PGY1
Marshall Howell - PGY2
Kristen Bascombe/Jordan McQuilkin - PGY3

Medical Student Resident Teacher of the Year
Karl Holt

Medical Student Faculty Teacher of the Year
Kathleen O'Donnell

Rotator Program Resident Teacher of the Year
Sam Sheikali

Rotator Program Faculty Teacher of the Year
Randy Wallace

Rotator Program Faculty Teacher of the Year (PA/NP)
James Schwendinger

Toxicology Rotator of the Year
Girgis Fahmy

Grady Nurses' Choice
Sam Sheikali

Faculty Advisor/Mentor of the Year
Liang Liu
Ziad Kazzi

Resident Advocate of the Year
Anwar Osborne

Grady Nurse of the Year
Anne Harbor

RN/NP Award
Dan Young

Grady Ancillary Staff of the Year
Jonathan Holman (EKG)
Environmental Services

Global Health Pathway Graduates
Guen Gwanyalla
John Diehl
Jasmyne Patel
Kristen Bascombe

Golden Probe (Ultrasound) Award
John Diehl
Svadharna Keerthi

Caring for Coordinators
Nabil Abazaid
Hannah Meyer

Dr. Kristen Moore and the Foundations team recognized the following outstanding educators for their exceptional teaching skills and their commitment to teaching. Congratulations to the Teachers of the Year and the Outstanding Scholars for your commitment to emergency medicine and education.

Emory Foundations I Teacher of the Year
As selected by the PGY1 class

Faculty
Dr. Rachel Koval & Dr. Philip Shayne

Residents
Dr. Abyalew Sahlie & Dr. Jordan McQuilkin

Emory Foundations II Teacher of the Year
As selected by the PGY2 class

Resident
Dr. Michael Franczak

Along with the teaching awards, they also recognized the Emory Foundations Outstanding Scholars. These are PGY1 (Foundations I) and PGY2 (Foundations II) residents who demonstrated exceptional professionalism and medical knowledge within Emory Foundations courses.

Emory Foundations I Outstanding Scholars
Dr. Tori Ehrhardt
Dr. Brittney Gordon
Dr. Gabrielle Ragazzo
Dr. James Snitzer
Dr. William Warnock

Emory Foundations II Outstanding Scholars
Dr. Farina Shafiqat
Dr. Reena Underiner

2022 National Association of EMS Physicians Annual Meeting

Faculty and fellows in the Section of Prehospital and Disaster Medicine participated in the 2022 National Association of EMS Physicians Annual Meeting. Congratulations to:

Dr. Michael Carr for winning the New Speaker competition with "How to Build a Rural Tele-EMS Network: A Step By Step Guide!"

Dr. Lekshmi Kumar who served another term as the Chair of the Public Health Committee.

2022 National Medical Association Conference

Dr. Jamaji Nwanaji-Enwerem earned the 2nd Place Award for Outstanding Research Presentation in the Georges Benjamin Research Symposium at the National Medical Association Conference.

Dr. Nicole Franks led a Social Justice, Health Equity and Health Policy Session.

Dr. Katrina Gipson was elected secretary of the National Medical Association EM section.

Dr. Sheryl Heron presented on Navigating Leadership and Advocating for Change: Promoting DEI at your facility.

Dr. Tricia Smith was awarded the William Speight Lecture for the NMA EM section. Dr. Speight was an inaugural member of the NMA EM section well into his 80's faithfully attending NMA each year. He sadly died a few years ago and

his legacy lives on. Dr. Smith's presentation on Technology in Medicine was outstanding.

Emergency Medicine

Dr. Jordan Beau and Dr. Michelle Lall are Gold Star Reviewers for the [WestJEM](#) Education Issue.

Dr. Jeremy Ackerman was selected as a representative from the American College of Emergency Physicians (ACEP) to the Committee for Tactical Emergency Casualty Care (C-TECC). Starting January 2021, Dr. Ackerman will serve in the position for two years. In October 2020, Dr. Ackerman was sworn in as a Reserve Officer in the Fulton County Police Department. In November 2020, he passed the final test for the Peace Officer Standards and Training Council Instructor Training. Dr. Ackerman also attended SWAT school and is now "SWAT certified."

Dr. Jeremy Ackerman also received a Fulton County Medal of Honor for his valor with the Fulton County SWAT team on March 11.

Dr. Joe Carpenter was selected to the Advancing New Toxicology Investigators in Drug Abuse and Original Translational Research Efforts (ANTIDOTE) Institute's Class of 2021.

Dr. Michael Carr applied and was accepted to sit on the National Physician's Advisory Board (PAB) for Air Methods, a national helicopter EMS company. Dr. Carr will review, amend, and write national protocols used by Air Methods bases across the U.S. Drs. Isakov, McNally and Carr provide medical direction to 6 helicopter bases in the metro-Atlanta area. Dr. Carr was elected to be a fellow in the American College of Emergency Physicians (ACEP). Additionally, Dr. Carr spoke at the National Association of EMS Physicians (NAEMSP) Conference in California about the Emory Rural Tele-EMS program. He is also the DeKalb County Torchbearer Award recipient.

Dr. Shamie Das, American Medical Association House of Delegates for Medical Association of Georgia (alternate delegate)

Dr. Paul DeSandre from the Departments of Emergency Medicine and Family & Preventive Medicine is the recipient of the Emory at Grady Above and Beyond Award. In 2008, Dr. DeSandre became the first physician in the nation to have been trained and board-certified in both Emergency Medicine and Hospice in Palliative Medicine. His academic focus is on the integration of palliative medicine skills in emergency medicine practice.

Christina Eid from Emory EM's Johns Creek ED is the 2021 Top PA in EM. Annually, 10 PAs are recognized nationally by their peers.

Dr. Nicole Franks and Dr. Sheryl Heron represent Emory EM in Atlanta Magazines 2022 Top Docs edition.

Dr. Jordan Kaylor and a collaborative group from EUHM won Second Place in the Josh Nahum Infection Prevention and Control category for the 2022 Georgia Hospital Association Patient Safety & Quality Summit Awards for their project titled: Reducing Clostridium difficile by Using an Interdisciplinary Team Approach.

Dr. Nicole Battaglioli announced the top three faculty who have contributed to resident evaluation and feedback for the first half of the 2021-2022 academic year. Congratulations to:

Dr. Steven Lindsey
Dr. Liang Liu
Dr. Maneesha Sabharwal

for winning the Feedback Improving Resident Excellence (FIRE) Award.

Dr. Ziad Kazzi started the second iteration of the Medical Toxicology course for the Pakistan Indus Health EM Program on Friday, February 4. This year, there will be pre-recorded lectures and case simulations in small groups. Dr. Kazzi led a Grand Rounds Seminar in September 2021 on the Beirut Ammonium Nitrate Explosion.

Dr. Jason Liebrezeit will be part of the Academic Leadership Program. He was also invited to be an ABEM oral boards examiner. Dr. Michelle Lall has also been an oral boards examiner.

Dr. Kristen Grabow Moore and the Foundations of Emergency Medicine team, in conjunction with faculty from Emory Emergency Radiology, have developed a new open-access national course titled "Case Based Imaging." The course includes self-study imaging modules targeting emergent diagnoses. The modules can be consumed independently and can benefit a wide national audience of various levels of learners within EM and beyond.

Dr. Anwar Osborne talked to Rose Scott about working on the frontline of the pandemic and how the EM residents are doing for her show on WABE (September 2021).

Dr. Yuko Nakajima was elected President of Doctors Without Borders (MSF) Japan. She is also the lead ambassador to Japan for ACEP's International Ambassador Program.

Dr. Laura Oh was named Alternate Councilor for the American College of Emergency Physicians (ACEP) Emergency Ultrasound Section. She was also appointed to ABEM's Three-Year Review of the Model of the Clinical Practice of Emergency Medicine (EM Model) Task Force.

Dr. John Lewis and Dr. Oh can be ex-officio members of the GCEP BOD as chairs of ACEP committees.

Dr. Laura Oh was selected to the AACEM and SAEM inaugural Emerging Leader Development Program (Lead) Program. This year-long course will provide emerging leaders in academic emergency medicine with a structured, longitudinal experience designed to develop foundational leadership skills, cultivate a meaningful career network, and build a bridge to countless opportunities in their field.

Dr. Laura Oh is an Ultrasound research coach for SAEM's US section (AEUS). Dr. Oh is Chair of the American College of Emergency Physicians Academic Affairs Committee.

Dr. Tammie Quest has been named the 2022 recipient of the Richard Payne Outstanding Achievement in Diversity, Equity, and Inclusion Award from the American Academy of Hospice and Palliative Medicine. This award is presented annually to an individual who demonstrates strong, lasting, personal, and professional commitment to improving care for diverse, vulnerable, and underrepresented patient populations.

Dr. Andres Patino is Co-Chair of the American College of Emergency Physicians International Amabassador Program.

Chris Perry, our Senior Administrator, was selected to the 2022 Woodruff Leadership Academy. In 2003, Emory's Woodruff Health Sciences Center launched the Woodruff Leadership Academy (WLA) in honor of Mr. Robert W.

Woodruff. WLA develops leadership competencies needed in an academic health center, as well as the interpersonal, communications, and presentation skills necessary to meet the challenges of the rapidly changing landscape in research, education, and health care.

Dr. Bisan Salhi was named a Top New Peer Reviewer for the Annals of Emergency Medicine in 2021. Selections are based on outstanding timeliness, quality of reviews, volume of reviews, and other factors. Names of those achieving this honor were printed in the April 2022 issue.

Dr. Jeffrey Siegelman received the CORD Distinguished Educator Academy Award for Teaching and Evaluation.

Dr. Monique Smith was recognized by Rock Health as a Top 50 leader in Digital Health making healthcare better for all. Dr. Smith joined the Aspen Global Innovators Group 2022 class of the Healthy Communities Fellowship, a program designed to amplify the voices of community leaders creating healthier communities.

Meredith Ashoob Stauch was selected to join the Emory Professional Leadership Enrichment and Development Program (EM-ProLEAD) cohort of 2022.

Dr. Alaina Steck was selected to the 2022 Stanford Clinical Teachers Course Cohort. Led by two Stanford trained facilitators, Reena Hemrajani and Richard Pittman, the Stanford Faculty Development Clinical Teaching program is a validated, internationally recognized method of training for medical teachers to enhance their skills to be more effective in any medical educational setting.

Dr. Anna Yaffee has a new position in the Global Health and Equity Office (GLOBE) as the Director of Global Health Education. This position aligns with the work she is doing with the Global Health Track at the GME level. Dr. Anna Yaffee also assisted in the development of the PATH app that is being used in Pakistan for life-saving trauma advice. Muhammad Zia ul Haq, MD, MPH in the Rollins School of Public Health connected with Dr. Yaffee to develop the project.

PROMOTIONS

Drs. Nicole Franks and Ziad Kazzi became full Professors.

Drs. Megan Henn, Lauren Hudak, Kristen Moore, and Anna Yaffee were promoted to Associate Professors.

Emergency Medicine Residents' Association

Dr. Katrina Gipson is an EMRA 25 under 45 EM Awardee.

Dr. Rahel Gizaw is EMRA's EM FOAMer of the Year.

Equity, Diversity and Inclusion Committee

Team Award: The Emory School of Medicine's EM Residency Program and Morehouse School of Medicine are the inaugural winners of the 2021 ACGME Diversity and Inclusion Award.



Faculty and Resident Contributions at CORD

Compiled by Dr. Michelle Lall

Eliot Blum

- Illuminating the Closet: Mentoring LGBTQIA+ Learners
- Member – County Committee

Girgis Fahmy

- CPC Case Presentation: Stiff Person Syndrome

Kimberly Herard

- Chair, EMRA International Committee

Michelle Lall

- Illuminating the Closet: Mentoring LGBTQIA+ Learners
- Remember the Me in Remediation
- Member – Medical Education Fellowship Directors Community of Practice
- Co-director – Medical Education Fellowship Journal Club
- Member – Resilience Committee

Kristen Moore

- Chair, Executive Committee Annual Meeting, Foundations of Emergency Medicine
- Chair, Awards Ceremony, Foundations of Emergency Medicine

Anwar Osborne

- Rolling with All the Punches – Keeping the Team Moving Forward Through Simultaneous Crises (with Anwar Osborne)
- Member – County Program Committee

Jeff Siegelman

- CORD Academy Award – Distinguished Educator in the category of Teaching and Evaluation
- CORD Academy for Scholarship committee member

Todd Taylor

- Creating Active Lecture Environments
- Stepped down as County Com Chair
- Planning committee for SE CORD Educational Conference
- Member Education Committee

Brad Wallace

- Rolling with All the Punches - Keeping the Team Moving Forward Through Simultaneous Crises (with Anwar Osborne)
- Member - Remediation Committee
- Member - County Program Committee
- Member - Education Committee

Melissa White

Co-Chair of the CORD EM DEI Education Subcommittee

Georgia College of Emergency Physicians Awards

Dr. Kristen Bascombe: In-Training Professionalism and Service. The GCEP ED In-Training Professionalism and Service Award is presented to a Resident or Fellow who demonstrates outstanding patient care in a professional and compassionate manner, and who has provided significant service to the Chapter or their community.

Dr. Doug Chesson: ED Director of the Year. The award is presented to a GCEP member who has made outstanding contributions to the Chapter and who has demonstrated outstanding improvement in operational and clinical standards in the following areas: quality patient care, operational effectiveness, education, patient satisfaction, and throughput.

Dr. Matt Keadey: Leadership. This award is given to a GCEP member who has made outstanding contributions to the Chapter and who has personal leadership attributes that will serve as an example and role model for others.

Global Health in Emergency Medicine Section

Four projects were awarded grants for the Global Health in EM Section (GHEMS) grant competition. The hope of the section is that these seed funds will strengthen collaborations with international partners and create sustainable emergency care capacity building projects at our collaborating institutions. Congratulations to the awardees:

Brittany Eddy (APP) Community-based perceptions of emergency care in Haiti. Resident Co-Investigator: Kimberly Herard. Other co-Investigators are from University Hospital Mirebalais in Haiti and Brigham & Women's Hospital/Harvard Medical School

Dr. Lily Peacock The Development and Implementation of a Point of Care Ultrasound Curriculum in Mozambique. Resident co-Investigators: Prem Menon, John Deihl. Other Co-investigators: Amy Zeidan, Tricia Smith, Abigail Hankin-Wei, EM faculty from Maputo Central Hospital in Mozambique

Dr. Lily Peacock Qualitative Needs Assessment of Emergency Medical Care in Liberia. Resident co-Investigator: Prem Menon. Other Co-investigators: Anna Yaffee, Yuko Nakajima

Dr. Liang Liu The Development and Implementation of a Point of Care

Ultrasound Curriculum in Mozambique. Resident co-Investigator: Prem Menon, John Deihl. Other Co-investigators: Amy Zeidan, Tricia Smith, Abigail Hankin-Wei, EM faculty from Maputo Central Hospital in Mozambique

Dr. Kazzi and Dr. Yaffee were awarded In the first round of seed grant funds.

2021 Faculty of the Year Award Recipient and Grand Rounds Presenter in 2022
Dr. Jonathan de Olano

Team Distinctions:

GHEMS faculty member selected as ACEP Ambassador to Japan.

GHEMS faculty member chairing ACEP International Ambassador Conference.

GHEMS faculty member selected as the School of Medicine GLOBE Director of Global Health Education.

Distributed ~\$50,000 in seed grant funds for 5 global health projects.

Graduate Medical Education & Residency Awards

Dr. Kristin Bascombe won the Georgia College of Emergency Physicians Professionalism and Service Award.

Dr. Rahel Gizaw was the EMRA FOAMer of the Year.

The White House Office of Public Engagement invited **Dr. Jamaji Nwanaji-Enwerem** to the White House and the Capitol for conversations on Healthier Futures. He was also invited to the Clinician Innovators Roundtable Series through the White House Office of Public Engagement. This is an ongoing forum for national leaders to discuss innovation on matters of health policy and clinical practice for the betterment of patients everywhere.

The American College of Medical Toxicology awarded **Dr. Girgis Fahmy and Dr. Tori Ehrhard** travel awards for 2022.

The EM team is thankful for the EM faculty's commitment to teaching, leadership and excellence.

Health DesignED

Dr. Monique Smith, in partnership with the Emory Emergency Department, published "Digital Health Solutions and Wearable Devices" in Health Informatics: Healthcare Information Technology for Cardiovascular Medicine, Telemedicine and Digital Health in October 2021. The publication provides considerations for designing clinically relevant wearables and measuring their value. The Emory Tele-EMS initiative case report outlines the role of Health DesignED providing the insights into identifying, assessing and testing solutions to determine a platform with bandwidth and integration to EMS technology in rural Georgia.

In light of the historical and racial inequities that have shaped barriers to accessible healthcare, Health DesignED was selected to join the American Medical Association

(AMA) Equity and Innovation Advisory Group to provide guidance on the AMA's three-year plan to embed racial justice into policies and practices, and to ensure more equitable innovation in healthcare.

Health DesignED also led a design studio for the AMA to support the co-creation of their Health Equity Fellowship with – and not for – their target audience.

Dr. Monique Smith, the Founding Executive Director of Health DesignED, was selected as one of Rock Health's Top 50 leaders in Digital Health as a leader in her commitment to provide innovative, digital health solutions to underserved populations. RockHealth.org aims to catalyze an equitable digital health future for all by equipping digital health innovators with greater resources, extended reach, and broader recognition. <https://www.topsoindigitalhealth.com/>

New Board Certifications & Diplomas

Dr. Joe Carpenter is now triple boarded in EM, Med Tox, and Addiction Medicine. The American Board of Preventive Medicine recently announced his certification in Addiction Medicine.

Dr. Michael Carr passed the American Board of Emergency Medicine EMS subspecialty board exam. The pass rate for this challenging exam was 63% from among 344 candidates in the last testing cycle.

Drs. Josh Guttman, Gregg Helland, Usama Khalid, Liang Liu, Laura Oh, and Lekha Shah received ABEM's Focused Practice Designation in Advanced Emergency Medicine Ultrasonography. Dr. Oh said that "it was full of US estoterica + physics, research methodology, and stats."

Dr. Lily Peacock earned her diploma in Mountain Medicine. The course includes 200 hours of didactic and practical training in mountain rescue. This training equips health professionals with the knowledge and skills to adapt their medical practices to the mountains. Students become technical and medical leaders for rescue teams around the globe. The program is accredited by the International Climbing and Mountaineering Federation, International Commission for Alpine Rescue and the International Society for Mountain Medicine.

NATIONAL BOARD APPOINTMENTS

Dr. Michelle Lall, Dr. Liang Liu, Dr. Taylor Stavelly, and Dr. Amy Zeidan were elected to National Boards.

Dr. Lall is serving on the SAEM Board for a second 3-year term as a Member-at-Large.

Dr. Liang Liu was elected to the AEUS Board as Treasurer.

Drs. Stavelly and Zeidan were elected to leadership positions with AWAEM. Dr. Stavelly is the VP of Membership and Dr. Zeidan is the VP for Communications.

Dr. Sheryl Heron was named Chief Diversity and Inclusion Officer for the School of Medicine.

Dean Sukhatme said, "As a leader of the SOM's diversity, equity and inclusion initiatives, Heron will drive progress toward our institutional goals by focusing on several areas, including program and policy development, awareness and education, research, and partnerships and engagement. She will also partner with our education leaders to support diversity, equity, inclusion and anti-racism efforts across pipeline programs, prospective learners and current learners in addition to faculty and staff."

Dr. Heron joined the Association of American Medical Colleges Group on Diversity and Inclusion as a representative for the Southern Region.

GERIATRIC EMERGENCY DEPARTMENT ACCREDITATION

EUH ED Receives Geriatric Emergency Department Accreditation

Dr. Warren Perry helped lead the EUH ED in receiving their Geriatric Emergency Department (GED) Accreditation by the American College of Emergency Physicians through the Geriatric Emergency Department Accreditation Program (GEDA).

The EUH ED is one of the first GEDs in the state of Georgia. The EUH ED meets the inter-disciplinary geriatric standards set forth by ACEP and signals that the ED is focused on the highest standards of care for our older adult communities.

Dr. Perry also recently completed the Emory SOM Under-Represented in Medicine (URiM) Faculty Development Program. This is a five-month career development program for underrepresented minority faculty. The program provides resources, information, and tools important for academic success. The course features didactic sessions from diverse speakers, experiential components, along with peer mentoring and networking.

Dr. Michael Clery is the Deputy Director for the City of Atlanta's Office of Violence Prevention. He will continue to work clinically while dedicating part of his time to the Office of Violence Reduction and Mayor Dickens' administration.

WHITE HOUSE OFFICE OF PUBLIC ENGAGEMENT

The Emory EM team is proud to have two physicians participating in White House Office of Public Engagement Roundtables:

Dr. Jamaji Nwanaji-Enwerem, an Emory EM Residency Intern, has joined the Clinician Innovators Roundtable Series.

Dr. Monique Smith, leader of Emory EM's Health DesignED, is participating in the Leaders in Health Equity Roundtable Series.

SAEM Awards

Dr. Anika Backster was celebrated and thanked for her leadership in ADIEM.

Dr. Sheryl Heron gave the Dr. Peter Rosen Keynote Address.

Dr. Michelle Lall 2021-2022 recipient of the Academy for Women in Academic Emergency Medicine Mid-Career Award. She also received the AWAEM First Author Research Award for this publication: Lall MD, Bilimoria KY, Lu DW, Zhan T, Barton MA, Hu YY, Beeson MS, Adams JG, Nelson LS, Baren

JM. [Prevalence of Discrimination, Abuse, and Harassment in Emergency Medicine Residency Training in the US](#). JAMA Netw Open. 2021 Aug 24;8(8):e2121706. doi: 10.1001/jamanetworkopen.2021.21706

Dr. Laura Oh was a recipient of the First Author Review/Concepts Award for the publication: Oh L, Linden JA, Zeidan A, Salhi B, Lema PC, Pierce AE, Greene AL, Werner SL, Heron SL, Lall MD, Finnell JT, Franks N, Battaglioli NJ, Haber J, Sampson C, Fisher J, Pillow MT, Doshi AA, Lo B. [Overcoming barriers to promotion for women and underrepresented in medicine faculty in academic emergency medicine](#). J Am Coll Emerg Physicians Open. 2021 Dec 21;2(6):e12552. doi: 10.1002/emp2.12552

Dr. Nicole Franks was the Honorable Mention recipient of the AWAEM First Author Review/Concepts Award for the publication: Franks NM, Gipson K, Kaitiso SA, Osborne A, Heron SL. [The Time Is Now: Racism and the Responsibility of Emergency Medicine to Be Antiracist](#). Ann Emerg Med. 2021 Nov;78(5):577-586. doi: 10.1016/j.annemergmed.2021.05.003

Dr. Taylor Stavelly received the AWAEM momentum award.

Drs. John Diehl, Svadharna Keerthi & Mustafa Rasheed, and Dr. Jordan Leumas, as faculty coach, represented Emory EM at this year's Sonogames competition. Dr. Liang Liu said, "This is the culmination of many months of hard work. Emory placed tenth in round 1. This is out of 75 teams in the competition. A feat that many of us in the ultrasound section who have completed in Sonogames as residents never achieved, and I believe the best performance yet of any Emory team. Their score in round 1 was based on scoring of a round 0 submission, a knowledge assessment, and their performance of a technical task.

Additionally, this was the 10th anniversary for Sonogames so there was a national call for t-shirt designs. Dr. Rahel Gizaw's design was selected as the winning design (see below for the design) and was featured on all the t-shirts & printed on hundreds of stickers now floating throughout New Orleans and amongst various ultrasound nerds."



School of Medicine Appointment & Position Awards

Dr. Alaina Steck is the new Thread Director of Pharmacology for the Emory School of Medicine.

UNDERGRADUATE MEDICAL SCHOOL APPOINTMENTS

Dr. Anwar Osborne is a small group advisor for Undergraduate Medical Education in the Semmelweis Society.

Dr. Amy Zeidan was just chosen to be a society leader in the SOM's Community Learning and Social Medicine Course.

Dr. Jeffrey Siegelman is the Assistant Director of the Emory SOM Essentials of Patient Care (EPC) course. This longitudinal course is a key piece of the medical school curriculum in which students learn the intricacies of the history and physical as well as basic and more advanced communication techniques such as delivering bad news and public health counseling.

Dr. Todd Taylor is the co-director of the SOM's Junior Faculty Development Course.

FACULTY EXCELLENCE AWARDS

October 2021

Professors
Dr. Nicole Franks
Dr. Ziad Kazzi

Associate Professors

Dr. Laura Oh
Dr. Alain Steck

Dean's Teaching Award

Dr. Megan Henn

Hidden Gem

Dr. Joshua Guttman

Site Based Award

Dr. Ethan Meisel, Atlanta VA Medical Center

Distinguished Service Award

Dr. Nicole Franks

EDUCATOR APPRECIATION DAY

May 2022

Dr. Christopher Dudley
Dr. Matthew Gittinger
Dr. Melissa Gittinger
Dr. Megan Henn
Dr. Emily Kiernan
Dr. Steven Lindsey
Dr. Liang Liu
Dr. Kahra Nix
Dr. Elijah Robinson
Dr. Philip Shayne
Dr. Alaina Steck
Dr. Joshua Wallenstein
Dr. Melissa White

RESEARCHER APPRECIATION DAY

October 2021

Dr. Joe Carpenter

Wellness, Equity, Diversity, and Inclusion

We are fortunate to have exceptional EM leaders focused on DEI initiatives for both Emory and Emergency Medicine. In 2021, Dr. Sheryl Heron became the Emory School of Medicine's Associate Dean for Community Engagement, Equity & Inclusion/Chief Diversity & Inclusion Officer. She is also an EM Professor and Vice-Chair of Faculty Equity, Engagement & Empowerment. With her leadership, the Wellness, Diversity, Equity

and Inclusion Committee, and the dedication of many Emergency Medicine leaders and team members, the Department of Emergency Medicine will continue to institute change, address inequalities, and facilitate educational opportunities.

Research

IDEAS Vision

Innovation and discovery in emergent and acute care led by the Department of Emergency Medicine improves health.

The Innovation and Discovery in the Emergent and Acute Sciences (IDEAS) group in the Department of Emergency Medicine exists to support and grow research and researchers in the Department. The IDEAS group accomplishes this by removing barriers to research.

Research Programs

Injury Research Prevention Center at Emory - IPRCE

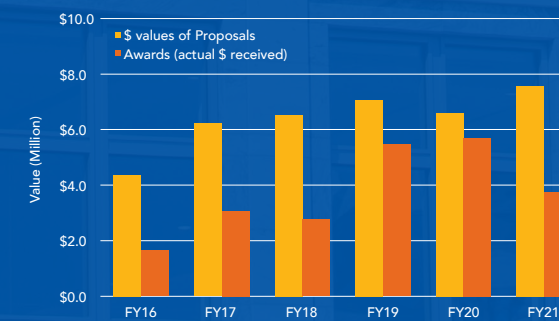
- » Brain Research Lab
- » Academic Research Clinical Coordinating Center
- » Emory Neurosciences Lab + Trial Operations Core

Research Goals

1. Increase faculty engagement in research (as evidenced by proposals, publications, and funding)
2. Hire faculty with a research focus
3. Increase resident engagement in research (as evidenced by publications and scholarly presentations)

For fiscal year 2021, there has been strong growth in funding through clinical trials and IPRCE. The research team offers the EM faculty a wide array of support services including study design, IRB, proposal development, statistics, ASSET, Scholars Program, and Writing Days. We are also fortunate to have dedicated a departmental research manager and statistics support.

Proposals/Awards, EM PI

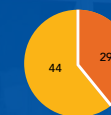


Total Award Value

■ FY21 EM PI ■ FY21 EM supported trial



Number of Active Trials



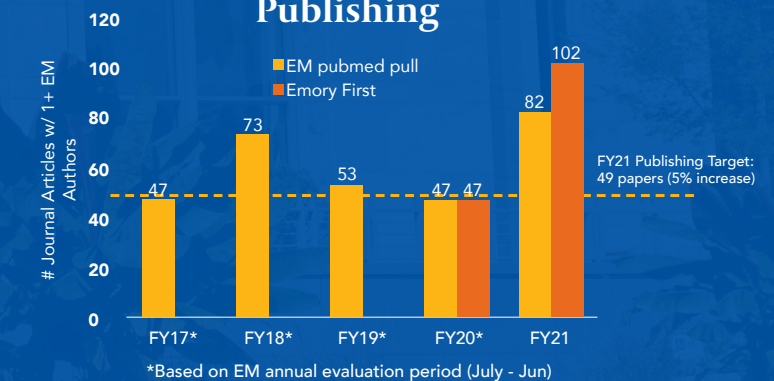
Department	# Active Trials Supported by EM
Neurology	26
Neurosurgery	11
Critical Care	6
Surgery	1
Total	44

During the year, we implemented revised IDEAS Scholars 101 and 201 programs, continued EM writing days, provided on-demand support for proposal development, and began advertising support services while encouraging the engagement of APPs, residents, and new faculty. We are also working to engage other academic departments to support collaboration with EM clinical faculty.

As we look toward the future, we plan to expand the research training occurring in faculty development sessions, increase engagement with industry through the Health DesignED, hire a director for the Brain Research Lab, and hire faculty with research training who can also help provide clinical trials leadership.

The Emory Department of Emergency Medicine is committed to being a leader in groundbreaking translational and public health research. We will continue to advance science and our field through innovation.

Publishing



	% of EM faculty who authored 1+ journal articles
FY20	29%
FY21	39%

Emory Emergency Medicine Publications

Wellness, Equity, Diversity, and Inclusion

Recruitment of a diverse emergency medicine residency program: Creating and maintaining a culture of diversity, equity, and inclusion <https://onlinelibrary.wiley.com/doi/abs/10.1002/aet2.10674>

This [article](#) describes what has been an iterative process over two decades of deliberate innovation, implementation, and reflection to recruit diverse emergency medicine residents. This has been possible due to focused and holistic application review, targeted mentorship programs, and, importantly, a broader culture of equity and inclusion in the department. The authors hope that this article serves as a reference for other residency programs working to improve their gender and race/ethnicity diversity.

“Why Bother?”: Barriers to reporting gender and sexual harassment in emergency medicine <https://onlinelibrary.wiley.com/doi/10.1111/acem.14544>

Are emergency physicians satisfied? An analysis of operational/organization factors. <https://onlinelibrary.wiley.com/doi/10.1002/emp2.12546>

The impact of racism on emergency healthcare workers. <https://onlinelibrary.wiley-com.proxy.library.emory.edu/doi/full/10.1111/acem.14347?sid=vendor%3Adatabase>

Overcoming barriers to promotion for women and underrepresented in medicine faculty in academic emergency medicine. <https://onlinelibrary.wiley.com/doi/10.1002/emp2.12552>

Prevalence of Discrimination, Abuse, and Harassment in Emergency Medicine Residency Training in the US. <https://jamanetwork.com/journals/jamanetworkopen/fullarticle/2783236>

Racial Bias Among Emergency Providers: Strategies to Mitigate Its Adverse Effects. https://journals.lww.com/aenjournal/Abstract/2021/04000/Racial_Bias_Among_Emergency_Providers__Strategies.2.aspx

“I just assume they don’t know that I’m the doctor”: Gender bias and professional identity development of women residents. <https://onlinelibrary.wiley.com/doi/abs/10.1002/aet2.10735>

Diversity, Equity, and Inclusion

Fitzhugh Mullan, Malika Fair, Amir Meiri, **Amy Zeidan**, Sarah Diamond O'Donnell, Ashley Darcy-Mahoney, Asefeh Faraz Covelli. **Beyond Flexner: A novel framework to implement the social mission of medical education.** *Education in The Health Professions*. 2021 Sept 15. <https://www.ehpjournal.com/article.asp?issn=2590-1761;year=2021;volume=4;issue=2;spage=50;epage=57;au=last=Mullan>

AEM E&T released their special issue entitled *Dismantling Racism With the Next Generation of Learners: Teaching Advocacy, Health Equity, and Social Justice* featuring:

“Say their names”: Thoughts on residency leadership response to police brutality and social injustices [Nguendab K. Gwanyalla MD, MPH, Samira Asker MD, Nabil Abazaid MD, MS, Kristin Aromolaran MD, MBA, Todd Jackson MD, MPH, Helene Okpere MD](#)

Untold stories: Emergency medicine residents' experiences caring for diverse patient populations [Adrienne Haggins MD, MS, Michael Clery MD, MPP, James Ahn MD, MHPE, Emily Hogikyan MD, Sheryl Heron MD, MPH, Renee Johnson MD, Laura R. Hopson MD](#)

Recruitment of a diverse emergency medicine residency program: Creating and maintaining a culture of diversity, equity, and inclusion [Michelle D. Lall MD, MHS, Anika Backster MD, MSCR, Melissa H. White MD, MPH, Sheryl L. Heron MD, MPH, Jeffrey N. Siegelman MD](#)

An article, **“Bias in the Emergency Department”** by Adrienne Haggins, MD, came out in *AAMC Insights* on February 17. It is based [on this study titled Untold stories: Emergency medicine residents' experiences caring for diverse patient populations](#). [Drs. Michael Clery, Renee Johnson \(former resident\) and Sheryl Heron](#) were part of the study.

Taylor Stavely MD, Bisan A. Salhi MD, PhD, Michelle D. Lall MD, MHS, Amy Zeidan MD. **“I just assume they don’t know that I’m the Doctor:”** Gender bias and professional identity development of women residents. *Academic Emergency Medicine Education and Training: A Global Journal of Emergency Care*. 01 March 2022. <https://doi.org/10.1002/aet2.10735>

Westafer LM, Freiermuth CE, **Lall MD**, Muder SJ, Ragone EL, Jarman AF. **Experiences of Transgender and Gender Expansive Physicians.** *JAMA Netw Open*. 2022;5(6):e2219791. Doi:10.1001/jamanetworkopen.2022.19791

Anika Backster, MD; Wendy Coates, MD; **Jeff Siegelman, MD;** and Jason Rotoli, MD, on behalf of the Accommodations Committee Subgroup of the SAEM Academy for Diversity & Inclusion in Emergency Medicine. **“Intersection of Disability and Race or Gender (Then and Now): A Disproportionate Effect.”**

Zeidan AJ, Smith M, Leff R, Cordone A, **Moran TP**, Brackett A, Agrawal P. **Limited English Proficiency as a Barrier to Inclusion in Emergency Medicine-Based Clinical Stroke Research.** *J Immigrant Minority Health* (2022). <https://doi.org/10.1007/s10903-022-01368-y>

Prehospital and Disaster Medicine

Ali DM, Hisam B, Shaikat N, Baig N, Ong MEH, Epstein JL, Goralnick E, Kivela PD, **McNally B**, Razzak J. **Cardiopulmonary resuscitation (CPR) training strategies in the times of COVID-19: a systematic literature review comparing different training methodologies.** *Scand J Trauma Resusc Emerg Med*. 2021 Mar 29;29(1):53. doi:10.1186/s13049-021-00869-3. PMID: 33781299; PMCID: PMC8006111.

Amanda Amen, Patrick Karabon, Cherie Bartram, Kevin Irwin, Robert Dunne, Margaret Wolff, Mohamud R Daya, Kim Vellano, **Bryan McNally**, Ryan C. Jacobsen, Robert Swor, CARES Surveillance Group. **Disparity in Receipt and Utilization of Telecommunicator CPR Instruction.** 2019/11/12. *Journal Prehospital Emergency Care* Pages 1-6

Andersen, L. W., Holmberg, M. J., Granfeldt, A., Lofgren, B., Vellano, K., **McNally, B. F.**, CARES Surveillance Group. (2018). **Neighborhood characteristics, bystander automated external defibrillator use, and patient outcomes in public out-of-hospital cardiac arrest.** In *Resuscitation* Vol. 126 (pp. 72-79). Ireland. doi:10.1016/j.resuscitation.2018.02.021

Chan PS, Girotra S, Tang Y, Al-Araji R, Nallamothu BK, **McNally B.** **Outcomes for Out-of-Hospital Cardiac Arrest in the United States During the Coronavirus Disease 2019 Pandemic.** *JAMA Cardiol*. 2021 Mar 1;6(3):296-303. doi:10.1001/jamacardio.2020.6210. PMID: 33188678; PMCID: PMC7666759.

Collins EC, **Carr MJ**, Kim JS, Lewis J, Maleque N, Desai K, Chen J, Sevransky J, Gaddh M, Roupheal N, Hubbard J, Pendley AM. **Immune thrombocytopenia in 2 healthy young women after the Pfizer-BioNTech NT16B2b messenger RNA coronavirus disease 2019 vaccination.** *JACEP Open*. 2(12531). July 2021

Coute RA, Nathanson BH, Kurz MC, DeMasi S, **McNally B**, Mader TJ. **Annual and lifetime economic productivity loss due to adult out-of-hospital cardiac arrest in the United States: A study for the CARES Surveillance Group.** *Resuscitation*. 2021 Oct;167:111-117. doi:10.1016/j.resuscitation.2021.07.034. Epub 2021 Aug 10. PubMed PMID: 34389450.

Coute RA, Nathanson BH, Kurz MC, **McNally B**, Mader TJ. **The association between scene time interval and neurologic outcome following adult bystander witnessed out-of-hospital cardiac arrest.** *Am J Emerg Med*. 2021 Aug;46:628-633. doi:10.1016/j.ajem.2020.11.059. Epub 2020 Dec 2. PubMed PMID: 33309248.

Dang A, Williams B, Warsing W, Noone, M, **Isakov A**, Tan D, Liang S. **Air quality monitoring during high-level biocontainment ground transport: observations from two operational exercises.** *Disaster Med Public Health Prep* 2021 Jun 28;1-8.

Do SN, Luong CQ, Pham DT, Nguyen MH, Nguyen NT, Huynh DQ, Hoang QTA, Dao CX, Le TM, Bui HN, Nguyen HT, Hoang HB, Le TTP, Nguyen LTB, Duong PT, Nguyen TD, Vu YH, Pham GTT, Van Bui T, Pham TTN, Hoang HT, Van Bui C, Nguyen NM, Bui GTH, Vu TD, Le ND, Tran TH, Nguyen TQ, Le VH, Van Nguyen C, **McNally BF**, Phua J, Nguyen AD. **Factors relating to mortality in septic patients in Vietnamese intensive care units from a subgroup analysis of MOSAICS II study.** *Sci Rep*. 2021 Sep 23;11(1):18924. doi:10.1038/s41598-021-98165-8. PubMed PMID: 34556710; PubMed Central PMCID: PMC8460806.

Do SN, Luong CQ, Pham DT, Nguyen MH, Ton TT, Hoang QTA, Nguyen DT, Pham TTN, Hoang HT, Khuong DQ, Nguyen QH, Nguyen TA, Tran TT, Vu LD, Van Nguyen C, **McNally BF**, Ong MEH, Nguyen AD. **Survival after traumatic out-of-hospital cardiac arrest in Vietnam: a multicenter prospective cohort study.** *BMC Emerg Med*. 2021 Nov 23;21(1):148. doi:10.1186/s12873-021-00542-z. PubMed PMID: 34814830; PubMed Central PMCID: PMC8609736.

Harrington K, Meron S, Rothchild E, Rabinovitz S, Shartar S, Clark D, **Isakov A**, Chamberlain A, Gelaye E, Cegielski P, Gandhi N. **A University-led COVID-19 Contact Tracing Program Response to a COVID-19 Outbreak Among Students in Georgia, February–March 2021.** *Public Health Reports*. 2022;137(2_suppl):615-665. doi:10.1177/00333549221113866

Hofacker SA, Dupre ME, Vellano K, **McNally B**, Starks MA, Wolf M, Svetkey LP. **Association between patient race and staff resuscitation efforts after cardiac arrest in outpatient dialysis clinics: A study from the CARES surveillance group.** *Resuscitation*. 2020 Nov;156:42-50. doi:10.1016/j.resuscitation.2020.07.036: 32860854; PMCID: PMC7606705.

Isakov A. “Aerosol generating procedures and workplace safety – improving understanding, leading by example”. *Annals of Emergency Medicine* 2022; 80 (1) p. 35-37

Isakov A, Carr M, Munjal K, Kumar L, Gausche-Hill M. **EMS Agenda 2050 Meets the COVID-19 Pandemic.** *Health Security*. 2022; 20 (S1): S-97-S106

Joiner A, **Kumar L**, Barhorst B, Braithwaite S & for the Public Health Committee on behalf of the NAEMSP Board of Directors (2020). **The Role of Emergency Medical Services in the Opioid Epidemic.** *Prehosp Emerg Care*. Jul-Aug 2021;25(4):462-464.

Kotini-Shah P, Del Rios M, Khosla S, Pugach O, Vellano K, **McNally B**, Vanden Hoek T, Chan PS. **Sex differences in outcomes for out-of-hospital cardiac arrest in the United States.** *Resuscitation*. 2021 Jun;163:6-13. doi:10.1016/j.resuscitation.2021.03.020. Epub 2021 Mar 30. PMID: 33798627. Kotini-Shah P, Del Rios M, Khosla S, Pugach O, Vellano K, **McNally B**, Vanden Hoek T, Chan PS. **Sex differences in outcomes for out-of-hospital cardiac arrest in the United States.** *Resuscitation*. 2021 Jun;163:6-13. doi:10.1016/j.resuscitation.2021.03.020. Epub 2021 Mar 30. PubMed PMID: 33798627; PubMed Central PMCID: PMC8576847.

Liu C, Lopman B, Guillou A, Handel A, Lash TL, **Isakov A**, Jenness S. **A modeling study to inform screening and testing interventions for the control of SARS-CoV-2 on university campuses.** *Sci Rep* 11, 5900 (2021)

McVaney KE, Pepe PE, Maloney LM, Bronsky ES, Crowe RP, Augustine JJ, Asaeda GH, Eckstein M, Mattu A, Fumagalli R, Aufderheide TP, Osterholm MT, writing group on behalf of the Metropolitan EMS Medical Directors Global Alliance (including **Kumar L**). **The relationship of large city out-of-hospital cardiac arrests and the prevalence of COVID-19.** *EclinicalMed (Lancet Open Access publication)* April 7, 2021; 34: e100815

Mills BM, Conrick KM, Anderson S, Bailes J, Boden B, Conway D, Ellis J, Feld F, Grant M, Hainline B, Henry G, Herring SA, Hsu WK, **Isakov A**, Lindley T, McNamara L, Mihalik JP, Neal T, Putukian M, Rivara FP, Sills A, Swartz E, Vavilala MS, Courson R. **Consensus recommendations on the prehospital care of the injured athlete with a suspected catastrophic cervical spine injury.** *Journal of Athletic Training*. 2020 Jun 23;55(6):563-572.

Moeller S, Hansen CM, Kragholm K, Dupre ME, Sasson C, Pearson DA, Tyson C, Jollis JG, Monk L, Starks MA, **McNally B**, Thomas KL, Becker L, Torp-Pedersen C, Granger CB. **Race Differences in Interventions and Survival After Out-of-Hospital Cardiac Arrest in North Carolina, 2010 to 2014.** *J Am Heart Assoc*. 2021 Sep 7;10(17):e019082. doi:10.1161/JAHA.120.019082. Epub 2021 Aug 25. PubMed PMID: 34431375; PubMed Central PMCID: PMC8649293.

Mohamed GA, Marmarchi F, Fonkeu Y, Alshaer Q, Rangaraju S, **Carr MJ**, Jones A, Peczkka M, Contreras I, Nahab F. **CPSS Implementation of an Urban County Severity-based Stroke Triage Protocol: Impact and Outcomes on a Comprehensive Stroke Center.** *Stroke*. February 2022

Naim MY, Griffis HM, Berg RA, Bradley RN, Burke RV, Markenson D, **McNally BF**, Nadkarni VM, Song L, Vellano K, Vetter V, v JW. **Compression-Only Versus Rescue-Breathing Cardiopulmonary Resuscitation After Pediatric Out-of-Hospital Cardiac Arrest.** *J Am Coll Cardiol*. 2021 Sep 7;78(10):1042-1052. doi:10.1016/j.jacc.2021.06.042. PubMed PMID: 34474737.

PH Pun, LP Svetkey, **B McNally**, ME Dupre, **Facility-Level Factors and Racial Disparities in Cardiopulmonary Resuscitation Within US Dialysis Clinics,** *Kidney360*, 2022

Polito C, **Bloom I**, Dunn C, Moore R, Chen J, Yancey A, Sevransky J. **Implementation of an EMS sepsis screening protocol to improve prehospital sepsis recognition and intervention.** *American Journal of Emergency Medicine*, April 2022.

R Garcia, **B McNally**, S Girotra, PS Chan, CARES Surveillance Group. **Variation in Out-of-Hospital Cardiac Arrest Survival Across EMS Agencies.** *Circulation Cardiovascular Quality Outcomes*, 2022, DOI: 10.1161/CIRCOUTCOMES.121.0087552022:

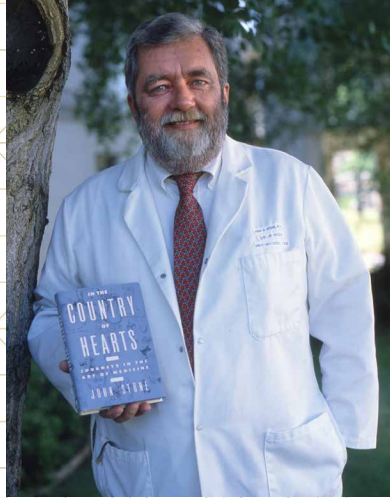
Shah, M., Bartram, C., Irwin, K., Vellano, K., **McNally, B.**, Gallagher, T., & Swor, R. (2018). **Evaluating Dispatch-Assisted CPR Using the CARES Registry.** *Prehosp Emerg Care*, 22(2), 222-228. doi:10.1080/10903127.2017.1376133

Shin J, Chocron R, Rea T, Kudenchuk P, **McNally B**, Eisenberg M. **Merits of expanding the Utstein case definition for out of hospital cardiac arrest.** *Resuscitation*. 2021 Jan;158:88-93. doi:10.1016/j.resuscitation.2020.10.041. Epub 2020 Nov 18. PMID: 33220350.

Sirikul W, Piankusol C, Wittayachamnankul B, Riyapan S, Supasaovapak J, Wongtanarasarin W, **McNally B.** **A retrospective multi-centre cohort study: Pre-hospital survival factors of out-of-hospital cardiac arrest (OHCA) patients in Thailand.** *Resusc Plus*. 2022 Mar;9:100196. doi:10.1016/j.resplu.2021.100196. eCollection 2022 Mar. PubMed PMID: 35036967; PubMed Central PMCID: PMC8749449.

Tran AT, Hart AJ, Spertus JA, Jones PG, **McNally BF**, Malik AO, Chan PS. **A risk-adjustment model for patients presenting to hospitals with out-of-hospital cardiac arrest and ST-elevation myocardial infarction.** *Resuscitation*. 2022 Feb;171:41-47. doi:10.1016/j.resuscitation.2021.12.021. Epub 2021 Dec 27. PubMed PMID: 34968532; PubMed Central PMCID: PMC8840945.

Recognizing Leadership & Legacy



Dr. John Stone was a Professor, Associate Dean, and Director of Admissions for the Emory University School of Medicine. He was a caring physician, a phenomenal mentor, and a true leader. We are honored to celebrate his legacy through the John Stone Emergency Medicine Awards and the annual Grand Rounds in his name. The Dr. John Stone Endowment Fund gives the Emory Emergency Medicine team an opportunity to recognize three Emory Emergency Medicine physicians through student nominations and selection by leadership. Each year, the team recognizes the Dr. John Stone Faculty of the Year, Dr. John Stone Medical Student Teacher of the Year, and a junior faculty member for the Dr. John Stone Faculty Development Award. Dr. Stone founded the Emory Emergency Medicine Residency Program in 1974 and co-edited a 1978 book titled Principles and Practices of Emergency Medicine which was the first comprehensive textbook for EM.

2022 DR. JOHN STONE AWARD RECIPIENTS

John Stone Faculty of the Year Award: Dr. Randy Wallace

John Stone Faculty Development Award: Dr. Samantha Strickler

John Stone Medical Student Teacher of the Year Award: Dr. Andre Matthews

Dr. Douglas Lowery-North impacted many physicians' lives at Emory and around the United States. Through the Dr. Lowery-North Fund, the Department of Emergency Medicine recognizes a Mentor of the Year and facilitates a Grand Rounds Lecture bringing the brightest minds and leaders in mentorship and education to Emory. Dr. Lowery-North was the first physician director of the Emory University Hospital Emergency Department in 1996 and was the director as the ED transitioned from a treatment room. In this role, he developed a model of care based on the patient and family. His insightful understanding and critical decision-making skills steered the department to success.



DR. DOUGLAS LOWERY-NORTH AWARD RECIPIENTS

Dr. Sheryl Heron, 2021

Dr. Michael Ross, 2022

GIVING TO EM

By donating to Emory Emergency Medicine, you are helping the team pursue excellence in clinical medicine, research, and training. With your help, we can make a difference in the lives of our patients, students, faculty, and communities.

To learn more about the Mentoring for Under-Represented Students in Emergency Medicine (MUSE) fund, Residency Development Fund, the Dr. Douglas Lowery-North Mentorship Fund, and the Dr. John Stone Fund, please contact Susan House, Senior Director of Development, Emory University of School of Medicine, shouse2@emory.edu, 404-727-9110.





EMORY
UNIVERSITY
SCHOOL OF
MEDICINE

**Department of
Emergency Medicine**

531 Asbury Circle, Annex Building, Suite N340
Atlanta, Georgia 30322

