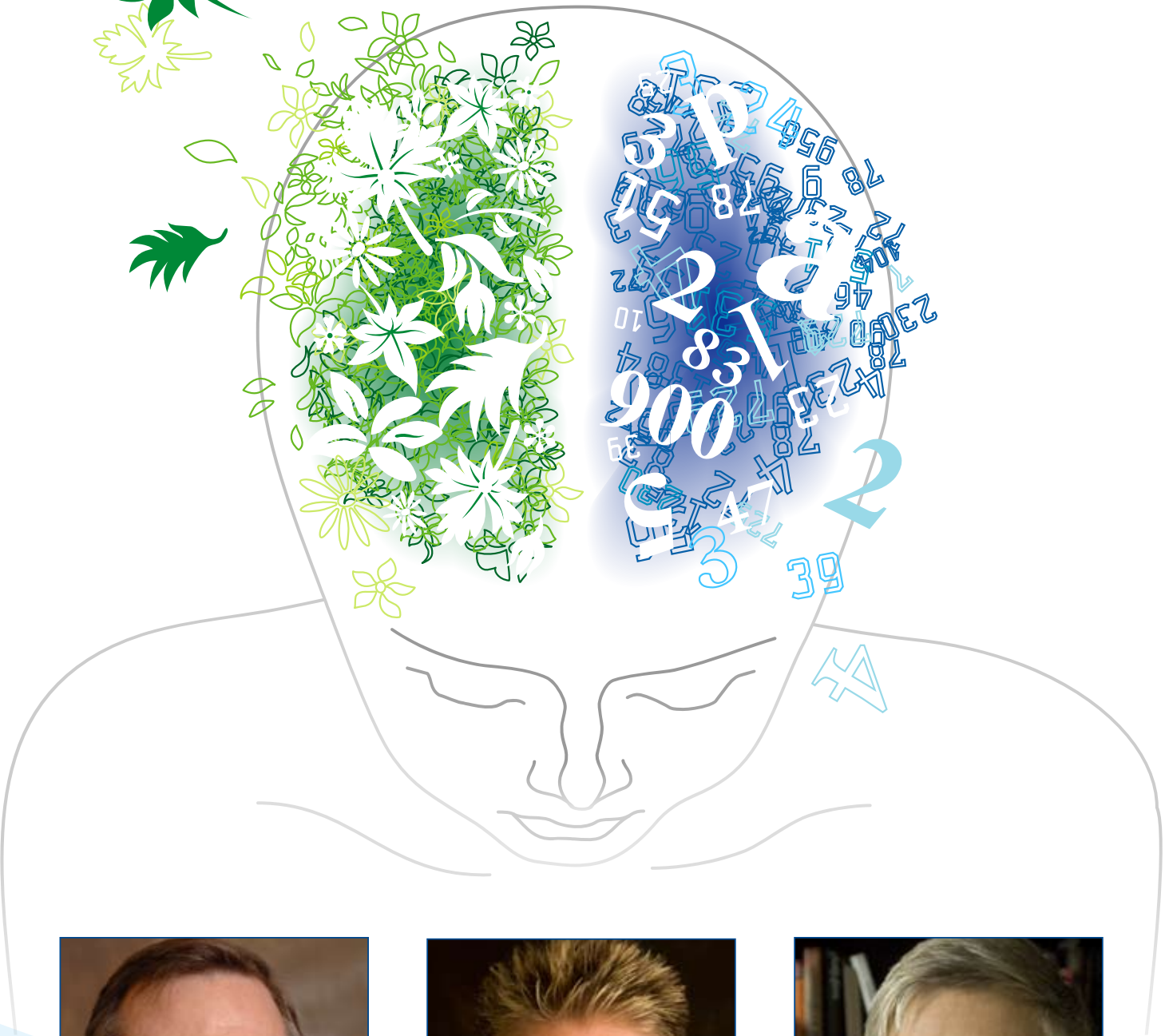


# Life of the Mind



EMORY



## **The Science of Love: Implications from Autism to Compassion**

**Larry J. Young**

William P. Timmie Professor  
Department of Psychiatry  
Yerkes National Primate Research Center  
*in conversation with*  
**Barbara (Bobbi) Patterson**  
Senior Lecturer, Department of Religion

**October 7, 2009**



## **Why Is Sexuality a Moral Experience?**

**Lynne Huffer**

Professor and Chair  
Department of Women's Studies  
*in conversation with*  
**Elizabeth A. Wilson**  
Professor of Women's Studies  
Emory University

**November 3, 2009**



## **Out and About: The New Look of Public Space since Disability Integration**

**Rosemarie Garland-Thomson**

Professor and Director of Graduate Studies  
Department of Women's Studies  
*in conversation with*  
**Benjamin Reiss**  
Professor and Director of Graduate Studies  
Department of English

**November 19, 2009**



*Sponsored by the Office of the Provost and the Faculty Council, the Life of the Mind series celebrates Emory's outstanding faculty and the dynamic intellectual community of the University.*

**All lectures are at 4:00 p.m. in the Jones Room, Woodruff Library.**  
For more information about the series, call the Office of the Provost at 404.727.4632.