

2009

NMR Experiment Procedure



NMR Research Center

2/25/2009

Experimental Guide for Varian MR Spectrometers

February, 2009

Introduction:	NMR Experiment Procedures.....	1
Exp.1:	1D proton and Basic Operations.....	2
Exp.2:	1D Carbon and Basic Operations.....	10
Exp.3:	Proton 90° Pulse Width Calibration.....	12
Exp.4:	Carbon 90° Pulse Width Calibration.....	14
Exp.5:	APT.....	15
Exp.6:	DEPT.....	16
Exp.7:	INEPT.....	18
Exp.8:	Presat or Water Suppression Experiment.....	20
Exp.9:	Gradient Shim.....	23
Exp.10:	COSY.....	26
Exp.11:	HETCOR.....	28
Exp.12:	1D NOE.....	30
Exp.13:	CYCLENOE (INOVA System).....	31
Exp.14:	NOEDIF(Mercury 300 Only).....	33
Exp.15:	NOESY.....	34
Exp.16:	HMQC/HMBC.....	35
Exp.17:	2D Data processing.....	38
Exp.18:	1D Carbon with Fluorine Decoupling.....	43
Exp.19:	Variable Hi/Lo Temperature Experiments.....	45
Exp.20:	Solid State NMR: CPMAS.....	
	Experiments and process procedures on VNMRS400.....	46
<i>Appendix A:</i>	<i>How to transfer data from Sun host computers to a PC.....</i>	<i>61</i>
<i>Appendix B:</i>	<i>When and how to use command su acqproc.....</i>	<i>62</i>
<i>Appendix C:</i>	<i>Most Useful Commands for VNMR and VNMRJ.....</i>	<i>64</i>
<i>Appendix D:</i>	<i>Processing NMR data with a PC.....</i>	<i>66</i>

Introduction: NMR Experiment Procedures

Step 1. Login

Varian ^{UNITY}INOVA NMR spectrometer is controlled by a host Sun computer. For security and administration reasons, all research groups at Emory University are issued their group usernames and passwords for the host computers. All authorized NMR users must use their group usernames and passwords to login to the host computers.

Step 2. Change Sample

A sealed CDCl₃ standard is always placed in the magnet to keep the instrument in working condition when not in use. Every user needs to replace the standard sample with your own sample at the beginning of each experiment and change back at the end of the experiment.

Step 3. Lock and Shim the Magnet

Locking the magnet keeps its field constant and stable during data acquisition. Shimming the magnet makes it uniform and homogenous for a sample to get a reasonable resolution and line shape.

Step 4. Setup Parameters and Acquire Data

Retrieve default parameters that are setup and updated for you by the NMR Center so that you may collect your data efficiently. Change some parameters accordingly to meet your own experiment needs.

Step 5. Process Data, Plot Spectrum and Save the Spectrum

This step converts data into NMR spectra. After proper processed, you could plot it on paper for your record. Also you should save the spectrum for your future review.

Step 6. Logout

Your mission is completed and you need to do a few things for the next user.

Step 1, 2, 3, and 6 are the same for all experiments. We will describe them in detail in Experiment One. Step 4 and 5 differ from experiment to experiment.

Note on NMR Operating Software:

Varian INOVA600, INOVA400, UNITY Plus 600, UNITY400:
Solaris 8 and VNMR 6.1C on SUN Workstations

Varian Mercury 300, Mercury Vx 300 (at WW) VNMRS400 and Rollins V400:
RedHat Linux 4.0WS and VNMRJ 1.1D or VNMRJ2.1B on Dell 380N PC

Bruker Avance 600WB: IRIS 6.5 (SIG O2) and Xwin-NMR 3.5

Off-line data processing by PC or Mac.
NUTS from Acornnmr, Inc. www.acornnmr.com
MestReNova 5.01 from www.mestrec.com.

Experiment 1: 1D Proton and Basic Operations

Sample to be used: 10% Strychnine in CDCl₃

Step 1. Login

1.1 Sign in NMR logbook.

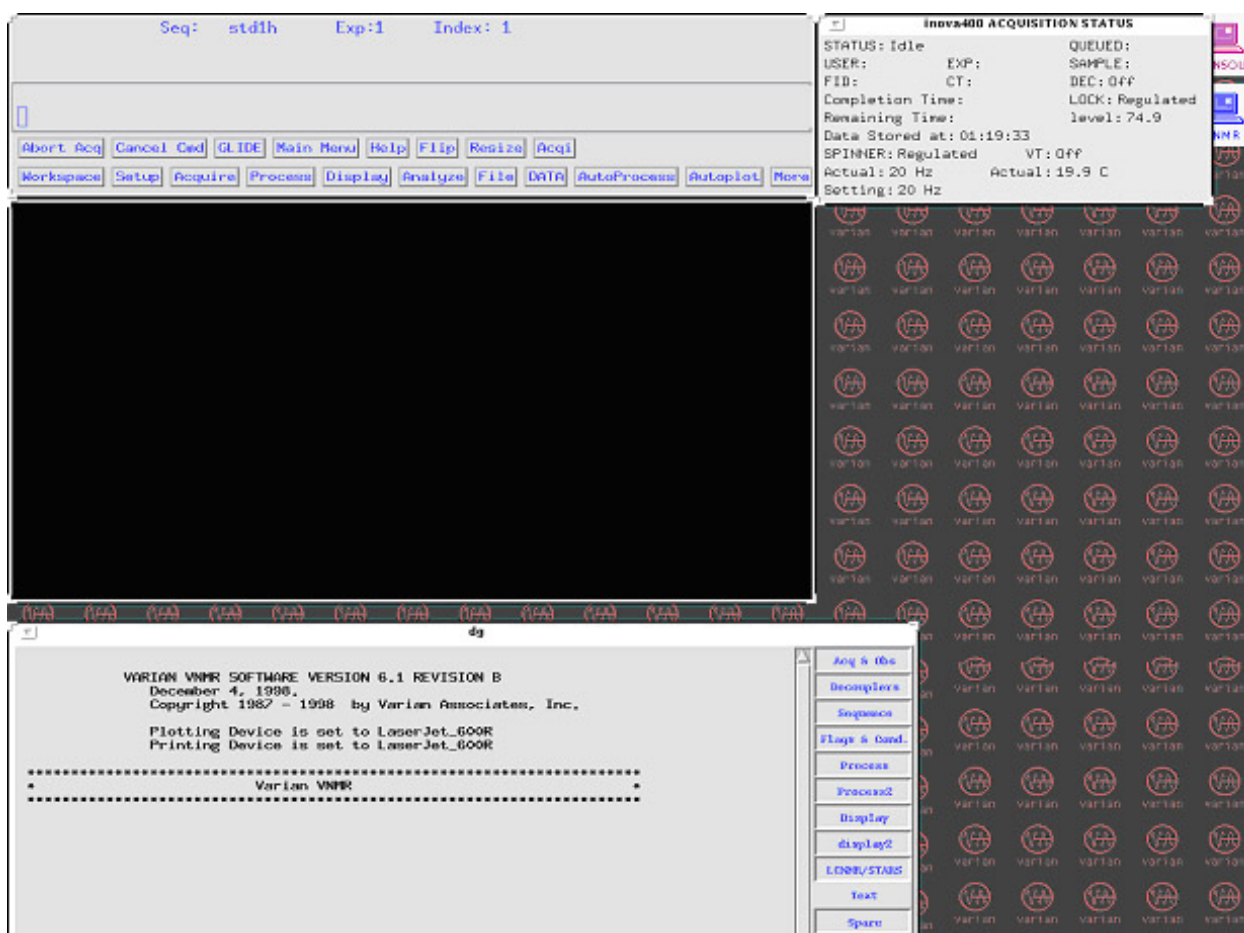
Type in your username at login prompt on the screen.

Type in your account password as the screen prompts.

Please note both the username and password are case sensitive.

If you could not login, contact Dr. Wu.

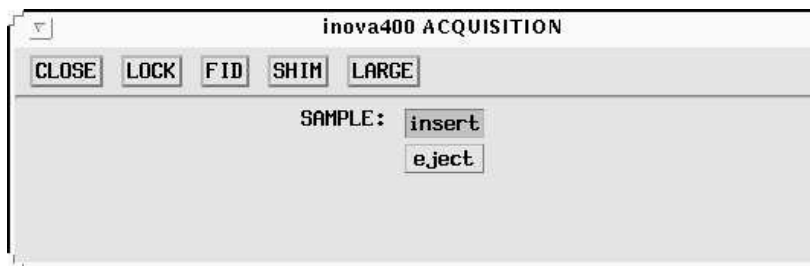
The VNMR software will be loaded in several seconds with the display of four windows. The upper left window is used for entering commands and selecting menu buttons; the middle left for displaying NMR spectra and the lower left for displaying NMR parameters and other text messages. The upper right window is called “**ACQUISITION STATUS**” window, indicating the working status of the instrument, such as lock level, spin rate, temperature and acquisition time, etc.



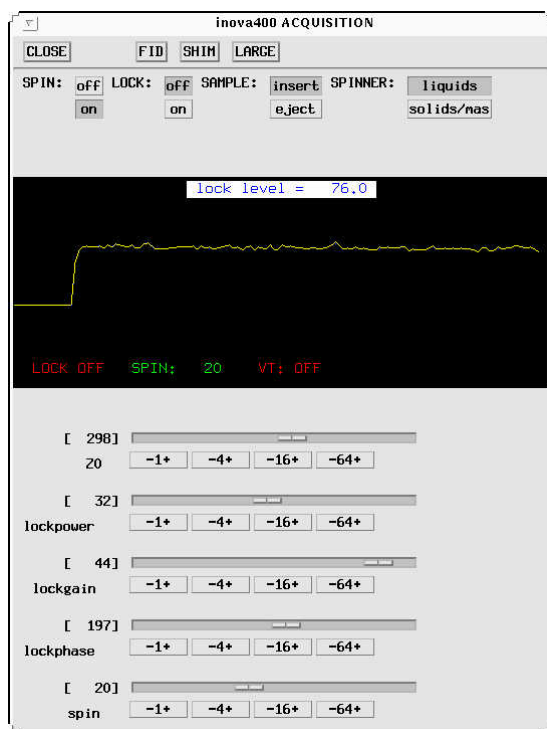
Step 2. Change Sample

2.1 Click on **Acqi** or type **acqi** in the command line to display the fifth window at lower right, which is called “**ACQUISITION**” window. All the operations hereafter in **Step 2** and **Step 3** will be operated in this window. There are **CLOSE**, **LOCK**, **FID**, **SHIM** and

LARGE popup menu buttons, and Sample **eject** and Sample **insert** buttons. We will be focusing on the **LOCK** and the **SHIM** buttons first.



- 2.2 Click on **LOCK** button to display lock sub-window then click SPIN: **off** button to turn off sample spinning; click LOCK: **off** to turn off the lock.
- 2.3 After a few seconds, the spin rate displays zero, then click on the SAMPLE: **eject** button to eject the standard sample onto the top of the magnet; remove the spinner, replace the sample with your own, use sample depth gauge to measure the correct tube position, use kimwipes to clean the spinner and your sample, then put the spinner back onto the top of the magnet again. **Caution: place the spinner with a sample on top of the magnet only when ejecting air is on.**
- 2.4 Click on the SAMPLE: **insert** button to put the spinner back down inside the probe. Wait for 3 to 5 seconds, then click on the SPIN: **on** button to make the sample spin.

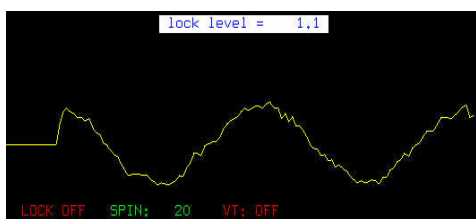


Lock sub-window

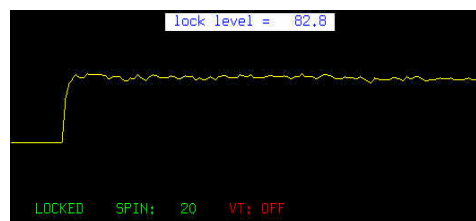
Step 3. How to Lock and Shim the Magnet

In this step, you need to adjust lock and shim parameters by using the mouse. Each parameter can be increased or decreased by 1, 4, 16 and 64 units as shown by corresponding -1+, -4+, -16+ and -64+ buttons. For example, when you place the cursor on a button, say -4+, if you click the left mouse button once, the corresponding parameter is decreased by 4 units; if you click the right mouse button twice, the parameter is increased by 8 units.

- 3.1 If you are using CDCl_3 solvent, the magnet could be locked almost instantly most of the time. This is indicated by the display of lock signal plateau and a green **LOCKED** message below it. Then you directly go to step 3.3.
- 3.2 If you don't see a plateau signal with a **LOCKED** message or you are using solvent other than CDCl_3 , click on LOCK: **off** button, adjust Z0 to make wave-like lock signal into plateau-like resonance, then click LOCK: **on** button. A green LOCKED should be shown. Then adjust the lock phase to make the lock level as high as possible. You need to reduce both the lock power and lock gain several units if the lock level exceeds 100. You may also check our record sheets on the desk. There are Z0, Lock power, Lock gain, and Lock phase values for different solvents recorded by previous users.

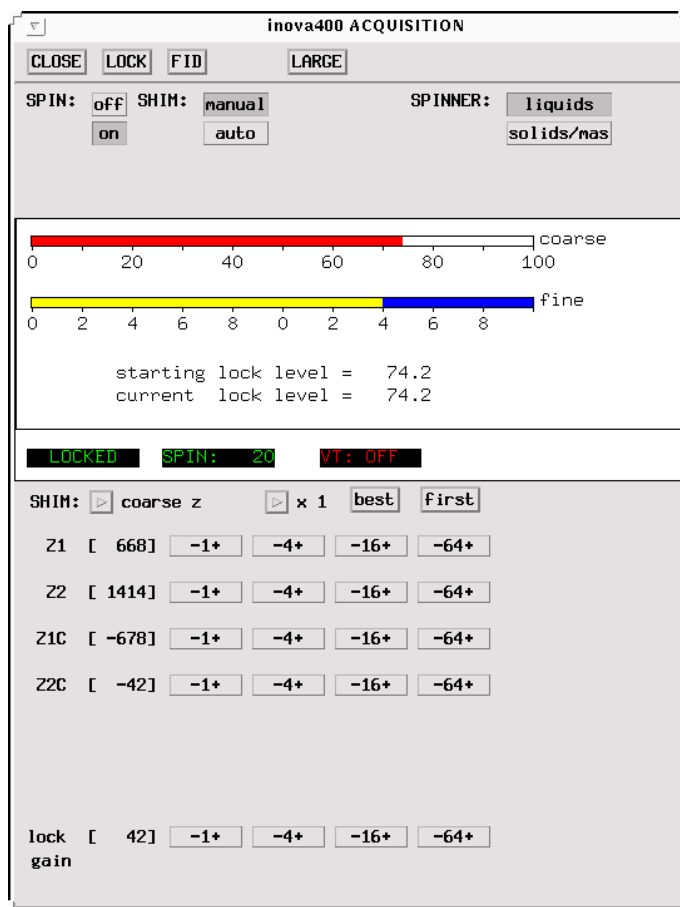


Not Locked



Locked

- 3.3 Now it is shimming time. There are as many ways to shim the magnet. We suggest you shim it this way:
 - 3.2.1 Click **SHIM** button to display shim sub-window. The lock level is shown in this window as two color bars and exact lock level is shown underneath the bars. In the middle of the window, there is one triangular button after 'SHIM:' which let you switch from shim sub-windows and lock sub-window by just click on it. Now it should show **coarse z** by the button.



- 3.2.2 Adjust Z1C (Z1 coarse) and Z2C(Z2 coarse) by alternatively changing 1 or 4 units to increase the lock level as high as you can. If the lock level increases to 100, decrease lock gain on the bottom of the window and then continue to adjust Z1C and Z2C. Higher lock level indicates better homogeneity of the magnetic field.
- 3.2.3 Click on the triangular button to switch to **fine z** sub-window. Adjust Z1, Z2 and Z3 one after another to make the lock level as high as possible, then adjust Z3, Z2, Z1 as such back and forth a couple of times. We do not suggest you to adjust Z4 and Z5 at this stage. If you really want to adjust them, it is better write them down before you change them, so that you are able to go back in the case you get a worse shimming.
- 3.3 Finally click the **CLOSE** button to end the shimming procedure.

Tip 1. Retrieve our default standard shimming file.

If you have a very bad shim, type “**loadshim**” in the command window to reinstall our default shim file for the standard sample.

If you would like to save your good shims, type `svs('shim_name')`. The file will be saved in: **/export/home/nmruser/your_ID/vnmrsys/shims**.

You could reload your shims by changing to the above file folder, select the shim file, then click **main** → **file** → **data** → (high light the shim file) then click **load shim**, then type **su** to use the new shim file.

Step 4. Setup Parameters and Run 1D Proton Experiment

- 4.1 Type **h1** to load the standard parameter for 1D proton experiment with a default CDCl₃ solvent. If your solvent is not CDCl₃, you may simply type **h1('solvent')**, where the solvent may be one among acetone, DMSO, D₂O, etc. You may also type **h1** and then type **solvent='DMSO'** etc. In this case, you may have to check the reference peak, then reset the correct chemical shift for your spectrum.

ACQUISITION	SAMPLE	PROCESSING	FLAGS
sfrq 399.941	date May 30 2000	lb 0.20	il n
tn H1	solvent cdc13	sb not used	in n
at 2.499	file exp	gf not used	dp y
np 25384	DECOUPLING	awc not used	hs nn
sw 5199.2	dn H1	lsfid not used	SPECIAL
fb 3000	dof 0	phfid not used	temp not used
bs 16	din nnn	wtfile	
ss 0	dmm c	proc ft	
tpwr 60	dmf 200	fn 32768	
pw 6.0	dpwr 30	math f	
p1 0		werr react	
d1 1.000		wexp procp1ot	
d2 0		ubs	
tof 199.6		wnt	
nt 1			
ct 0			

Proton standard parameters.

The standard parameters will be shown in the left lower window.

Tip 2. Check Current Parameters

Type **dg** to display the current parameters for the loaded experiment. If you have to change parameters, make sure you know what it is for. Type **su** to set it up and type **dg** to look at them.

- 4.2 Type **nt=8, 16** or **32**, according to sample concentration (or use a multiple of 8 for nt).
- 4.3 Type **ga** (submit to acquisition) to begin acquisition.
- 4.4 After acquisition is completed, a proton spectrum should be displayed on the screen now. If not, type **wft** (Weight and Fourier transform) to display the spectrum, then enter **aph** (automatic phasing) to phase the spectrum. Type **vsadj** (vertical scale adjustment) to adjust the vertical scale of the spectrum automatically. Type **dscale** or click on **Dscale** button to display chemical shift scale under the spectrum.

Tip 3. Manual Phasing

If you need to improve the phasing, you may manually phase the spectrum by first clicking on the **Phase** button, clicking on the region of interest, and moving the mouse up or down while pressing the LMB to adjust its phase. You may continue to click the cursor on the next region and adjust the phase same way. Clicking on the **Box** or **Cursor** button will exit the manual phase routine or type **ds**.

Tip 4. Manual Vertical Scale Adjusting

Place the cursor above the base line and click middle mouse button to increase the vertical scale. Place the cursor below the base line and click middle mouse button to decrease the vertical scale.

Step 5. Data Processing

5.1 Zoom operation

Click the LMB on the left side and click the RMB on the right side of a peak. Two vertical red cursors will appear at the click points, then click the **Expand** button on the menu bar. The region between the red cursors will be expanded. Click on **Full** button to return to the full spectrum after expanding, or type **f** then press enter. You may do this zooming operation as many times as you like.

5.2 Set reference

After zooming the region containing the reference peak, click the LMB near the top of the peak, then type **nl** to place the cursor exactly on the top of the peak. Then type **rl(x.xxp)** to set its chemical shift. For example, **rl(4.80p)** will set a peak frequency to 4.80ppm.

5.3 Integral operation

Enter **vp=12 or larger**. Type **ds cz** to clear all the previous integral values in the buffer. Click on the **Part Integral** button for the full spectrum or its expanded region to display an integral curve, then click on the **Resets** button. Now click the LMB at both sides of each peak or integral region to get separated integral lines of the spectrum.

If you know the proton number a specific peak represents, you may set the value for that integral as follows: place the cursor on the integral and then click on **Set Int**. The computer will then ask what value to assign that integral. After you input the value for a particular integral, the computer will recalculate the value of every other integral relatively. You are able to see these values by typing **dpir**.

Tip 5. Redo integral operation

If you made a mistake during the integral operation, you can redo the integral operation by typing **cz**.

5.4 Peak picking operation

Type **ds** and click on **Th** to display a yellow horizontal threshold line. Every peak above this line will be assigned its chemical shift in ppm (axis='p') or hz (axis='h'). Press and hold the LMB to move the yellow cursor to the position you desire, then click on the **Th** button again. Type **dppf** to display peak frequencies above spectrum peaks.

Tip 6. Returning to interactive adjustment

During the above operations, if you are not able to find the button you need or you are unable to use the red cursor, simply click on **Main menu** > **Display** > **Interactive**

- 5.5 Label your experiment data
Type *ctext* to clear any text label for the present experimental data. Type *text('Your sample name date||solvent')* to label the present experimental data. Command *dtext* will display the text on the top left corner of your spectrum.
- 5.6 Print and plot spectrum and related information
All printing procedure starts with *pl* and ends with *page*. You can put other printing commands selectively between these two commands.
- | | |
|------------------|--|
| <i>ppa---</i> | to print select parameters with text labels. |
| <i>pl---</i> | to print the present spectrum; |
| <i>pap---</i> | to print all the parameters including the text labels, if any. |
| <i>ptext---</i> | to print text labels without other parameters. |
| <i>pscale---</i> | to print the spectrum scale in ppm or hz by <i>axis="p"</i> or <i>axis="h"</i> . |
| <i>ppf---</i> | to print all the peak frequencies over the respective peaks. |
| <i>pll---</i> | to print a list of the frequencies and intensities. |
| <i>pirn---</i> | to print normalized integral values below the respective peaks. |
| <i>pir---</i> | to print proton numbers below the respective peaks. |
| <i>page ---</i> | to expel the paper from printer. |

If you want to print integrals, set *vp =12* first, or it wouldn't print.

- 5.7 Save your experimental data and reload your experimental data
You may save your spectrum data.
The directory path is `/export/home/nmrusr/Login_ID/` when you login. It is your group directory. You should make a directory for your own files.
Type *mkdir('yourname')* to make a directory of your own. Type *pwd* to check the current directory. If it does not, click on **Main menu** > **File** then highlight your directory name and click on **Set directory**. Remember you can go back to your group directory at any time by typing *cd*. To check the current directory, type *pwd*. Type *svf('file_name')* to save your data in the form of FID.
- 5.8. To reload your file, go to your directory first as described above, then click on **Main menu** > **File** > highlight your file > click on **load**. Then type *wft*.

Step 6. Logout

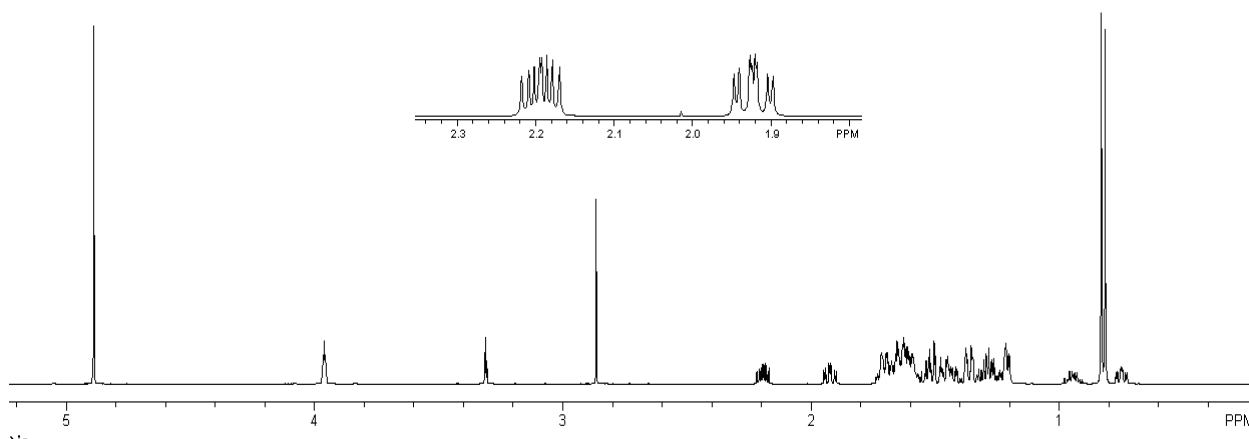
- 6.1 Retrieve standard file and replace your sample with the standard.
Type *h1* to set up standard proton file. This is especially important after you have done a carbon-13 experiment. It will turn off the decoupling channel automatically.
Then see **Step 2** for details about replacing NMR sample tubes.
- 6.2 Lock and shim the magnet
See **Step 3** for details. You are required to shim the magnet to the required level:
'loadshim' will reload the current shims for the standard.
- 6.3 Exit the VNMR program
Type *exit* to close the VNMR program. Now you will see a full screen of Varian's logo.
- 6.4 Exit UNIX system

Press the RMB to select Exit item in the popped up menu, release RMB. You will be prompted to select one of two choices: **Exit** or **Cancel**. Click on **Exit** to exit UNIX system. The screen will become blank and a prompt appears.

Caution: It is important to logout completely, otherwise your account will be still charged!

Tip:

Insert a part of your spectrum on the top of your full spectrum:



1. After the processing completed, type **pl pscale** no page command, that will save the full spectrum in plotter queue;
2. Use both red cursors to select the area you want to inserted, then type **inset**, The part of the spectrum will be displayed in the middle of the spectrum. Use mouse to adjust the size and location. Then type **pl pscale page**.
3. After printing completed, then your type: **ds full f and vs=0**, you will get the original spectrum back.
4. You could repeat these steps for few times and insert several spectra in the same plot before you type the **page** command.

Experiment 2: 1D Carbon-13 and Basic Operations

Sample to be used: 30% Strychnine in CDCl₃

Step 1. Login

(See Experiment One)

Step 2. Change Sample

(See Experiment One)

Step 3. Lock and Shim The Magnet

(See Experiment One)

Step 4. Setup Parameters Carbon Experiment

- 4.1 For Standard C-13 spectrum (Fully decoupled with NOE enhancement): Type ***c13*** or ***c13('solvent')*** to call up the standard carbon-13 experiment parameters with CDCl₃ solvent or different solvent.
- 4.2 Enter ***nt=128, 256***, or more according to the nature of your sample. Type ***time*** to check the total time of the experiment.
- 4.3 Type ***ga*** to begin acquisition.
- 4.5 After acquisition is done, a carbon spectrum should be displayed. If not, enter ***wft***. Type ***aph*** for automatic phasing. Manual phasing is often necessary for a carbon-13 spectrum.

Tip 7. Use large values for ***nt*** and ***aa*** Commands

¹³C sensitivity is very low. A common practice is to set a very large number for ***nt*** (ex. ***nt=5000*** etc.) to start the experiment. You can check the spectrum by typing ***wft aph*** and stop the experiment at any time by typing the ***aa*** command to abort acquisition. The ***time*** command can be used to estimate the total experiment time with a given ***nt***.

Step 5. Data Processing

5.1 Zoom operation

Click the LMB on the left side of a peak and the RMB on the right side. Two vertical red cursors will appear at the click points, then click the **Expand** button on the menu bar and the region between the red cursors will be expanded. You may do this zooming operation as many times as you like.

5.2 Set spectrum reference

After zooming the region containing the reference peak, click the LMB near the top of the peak, then type ***nl*** to place the cursor exactly on the top of the peak. Next, type ***rl(x.xxp)*** to set its chemical shift. For example, ***rl(77p)*** will set a peak frequency to 77.0 ppm.

5.3 Peak picking operation

Type ***ds*** and click the **next** and **th** buttons to display the horizontal threshold line. Press and hold the LMB to move the yellow cursor to the position you desire, then click on the **th** button again. Type ***dpf*** to display peak frequencies above spectrum peaks.

5.4 Label your experiment data

Type *ctext* to clear any text label for the present experimental data.

Type *text*("Your sample name, date|solvent, etc") to label the present experimental data.

Type *dtext* to display the text label of present data on the upper left of the spectrum.

5.5 Print and plot spectrum and related information

pl----to begin print the present spectrum;

pap---to print all the parameters including the text labels, if any.

ppa---to print some parameters and text labels.

pscale---to print the spectrum scale in the unit of ppm or hz by *axis="p"* or *axis="h"*.

pltext--- to print the label.

ppf---to print all the peak frequencies over the respective peaks.

page ---to expel the paper from printer.

5.6 Save your experiment data

You have to save your data in /export/home/nmrusr/Login_ID/yourname/

Type *svf('file_name')* to save your data in the form of FID.

Step 6. Logout (You MUST type **h1** before you logout)

6.1 Retrieve the standard file and replace your sample with the standard sample.

Type **h1** to set up the standard proton file. This will also turn off the decoupler power.

Next, see **Step 2** for details about replacing NMR sample tubes.

6.2 Lock and shim the magnet

See **Step 3** for details. Before exiting, you are required to shim the magnet to the required level.

6.3 Exit the VNMR program

Type *exit* to close the VNMR program. Now you will see a full screen of Varian's logo.

6.4 Exit UNIX system

Press the RMB to select the Exit item in the popped up menu, then release the RMB. You will be prompted to select one of two choices: Exit or Cancel. Click on Exit to exit UNIX system. The screen will become blank and a prompt appears.

6.5 Logout

Type *logout*. Sign off the logbook for the instrument.

Congratulations!!! You have finished a complete 1D carbon-13 experiment. Make sure you type the **h1 command before you logout.**

Experiment 3: Proton 90° Pulse Width Calibration

Sample to be used: 10% Strychnine in CDCl₃

Warning: You are not allowed to tune the probe without Dr. Wu's permission! If your experiment requires probe tuning, please contact our service instructors in advance.

Step 1. Login

Step 2. Change Sample and type *h1 su* to load proton parameters before doing lock and shimming. Then call up an NMR staff to check the probe. Tuning the probe may be necessary for different solvents.

Step 3. Lock and Shim the Magnet

Step 4. Setup Parameters and Run Experiment

Run a 1D proton spectrum, set the cursor to a peak near the center of the spectrum, then type **movetof** to set the peak on-resonance for calibration.

4.1 *nt=1* and *d1=10* or a value which is long enough to enable protons to relax back to thermal equilibrium status. (the default transmitter power: *tpwr=56 the max is 60*)

4.2 Type *array* and input the following parameter and numbers as the computer requests:

parameter to be arrayed: pw.

enter number of steps in array: 20

enter starting value: 2

enter array increment: 2

You are able to see the whole array parameters in the Text Window on the bottom by typing *da*

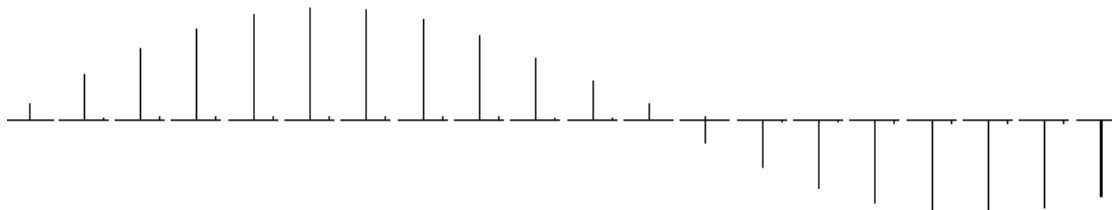
4.3 After the acquisition is completed, save the data.

Step 5. Data Processing

5.1 Display arrayed spectrum

When the acquisition is finished, enter *ds(1)* for displaying the first spectrum of the array.

Type *aph* for autophasing. Move the spectrum up a little bit by typing *vp=50*. Choose a singlet or a doublet peak to expand and then enter *ai dssh* for displaying peaks at the same chemical shift range in all of the individual spectra horizontally.



5.2 Null point spectrum and 90° pulse width

From the arrayed spectrum, identify the first null point (where the peak intensity is 0), then check the pw value corresponding to it. This pw value is the 180 degree pulse width. The 90° pulse width is this pw value divided by 2 at given power (*tpwr*). In this case *tpwr=56*. Type *pw90=xx* to set up this parameter, where xx was obtained as above. Record this number for your future application. The 90 degree pulse for an NMR standard was calibrated by NMR center and it is recorded in the logbook, your 90 degree pulse should not very far from this number.

5.3 Label your experiment data

See Experiment One.

5.4 Print and plot spectrum and related information

Type *plww pap page* to print spectra in white wash mode (after the first spectrum, each spectrum is blanked out in regions in which it is behind an earlier spectrum).

5.6 Save your experimental data

See Experiment One

Step 6. Exit and Logout

See Experiment One

Congratulations!!! You have finished a complete Proton 90° Pulse Width Calibration experiment.

Experiment 4: 90° Pulse Width Calibration for Carbon Channel

Sample to be used: 40% p-dioxane in benzene-d⁶ (ASTM)

Warning: You are not allowed to tune the probe without Dr. Wu's permission!

Step 1. Login

Step 2. Change Sample as routine.

Type *c13* ('Benzene') *su* to load C13 parameters. Type *dm='nnn'* to turn off the decoupler.

Then call up a NMR staff person to check the probe. Probe tuning may be necessary for different solvents.

Step 3. Lock and Shim the Magnet

Step 4. Setup Parameters

4.1 Type *dm='yyy'* *su* to turn the decoupler back on.

tpwr=xx (maximum 60), *nt=1*, then enter *ga* to begin acquisition.

4.2 After the acquisition is finished, phase the spectrum.

4.3 Set *d1=20* or a value which enables the carbon to relax back to thermal equilibrium status.

4.4 Type *array* and input the following parameter and numbers as computer requests:

parameter to be arrayed: *pw*.

enter number of steps in array: 20

enter starting value: 2

enter array increment: 2

You are able to see the whole array parameters in the Text Window on the bottom by typing *da*

4.5 Type *ai ga* to begin acquisition. The *ai* means absolute intensity mode.

Step 5. Data Processing

5.1 Display arrayed spectrum

When the acquisition is finished, enter *ds(1)* for displaying the first spectrum of the array. Type *aph* for autophasing, then type *vp=50* to move the spectrum up. Choose a singlet peak to expand and then enter *dssh* for displaying peaks at the same chemical shift range in all of the individual spectra horizontally.

5.2 Null point spectrum and 90° pulse width

From the arrayed spectrum, identify the first null point (where the peak intensity is 0), then check the *pw* value corresponding to it. The 90° pulse width is this *pw* value divided by 2 at given power (*tpwr*). In this case, *tpwr=60*.

Type *pw90=xx* to set up this parameter, where *xx* was obtained as above.

5.3 Label your experiment data

5.4 Print the spectrum and related information

Type *plww pap page* to print spectra in white wash mode (after the first spectrum, each spectrum is blanked out in regions in which it is behind an earlier spectrum).

5.5 Save your experiment data

Step 6. Exit and Logout (You must type *h1* before you logout)

Experiment 5: APT

Sample to be used: 30% Menthol in CDCl₃ with 2% Cr(AcAc)₃

Step 1. Login The Computer System

See Experiment One.

Step 2. Change Sample

See Experiment One.

Step 3. Lock And Shim The Magnet

See Experiment One.

Step 4. Setup Parameters and Run Experiment

- 4.1 type *c13* to load standard proton experiment parameters.
- 4.2 Set *nt=8*. Type *ga* to begin acquisition for a common 1D-carbon spectrum.
- 4.3 After acquisition, type *aph* for automatic phasing and /or manual phasing and then set the sw if needed. Remember, APT will show all carbon signals, including the solvent peaks.
- 4.4 Type *apt* to load standard APT parameters. Double check following parameters:
 - pw*----- Use 90 degree pulse or less for ¹³C
 - p1*-----180° ¹³C pulse width. (It is the double value of the 90° pulse width. Check the last page of the log book for 90° pulse width).
 - tpwr*-----transmitter power. It must be paired with 90° pulse width. (Check the last of the log book for 90° pulse width and transmitter power *tpwr*)
 - d2*-----the tau delay time. *d2=0.007* (7ms) will make CH, CH₃ peaks down and C, CH₂ peak up. We assume the ¹J_{CH}=140 Hz 1/140Hz = 7.14 ms.
 - d1*-----the pulse delay. It is set to around 10 seconds.
 - dm*-----decouple mode. It is set as *dm='yny'* for APT.
 - nt*-----scan numbers depends on sample concentration (minimum 16 scans).
- 4.5 Type *ga* to acquire data.

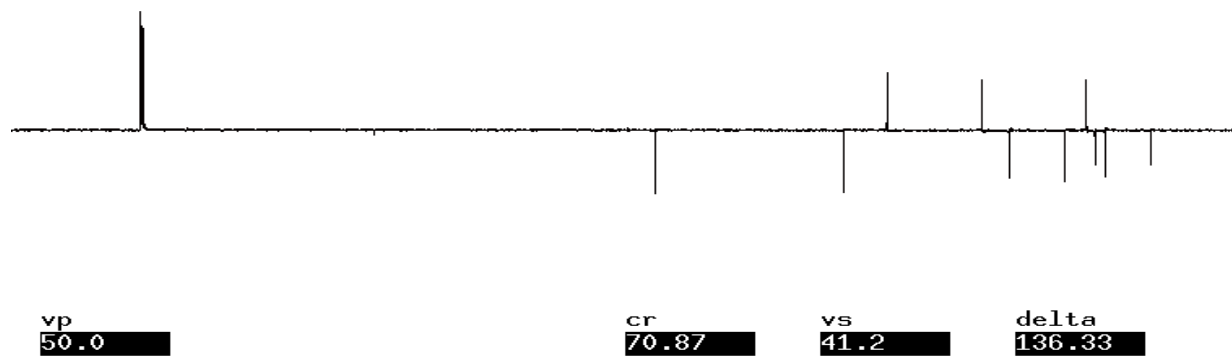
Step 5. Data Processing

When the acquisition is finished, type *aptaph* macro to phase APT automatically. Or manually phase the spectrum.

Type *pl pscale pap page* to plot the spectrum.

Step 6. Exit and Logout

See Experiment One



APT spectrum of Menthol in CDCl₃ on INOVA600. *pw=11*, *p1 =22* *tpwr=60*, *d2=0.007*, *d3=0.001* *dm='yny'* *dpwr=35* (Maximum 40) *dmf=8000* decoupling modulation frequency (1/*pw*90 at power 35 dB).

Experiment 6: DEPT

Sample to be used: 30% Menthol in CDCl₃

Step 1. Login The Computer System

See Experiment One

Step 2. Change Sample

See Experiment One

Step 3. Lock And Shim The Magnet

See Experiment One

Step 4. Setup Parameters And Run Experiment

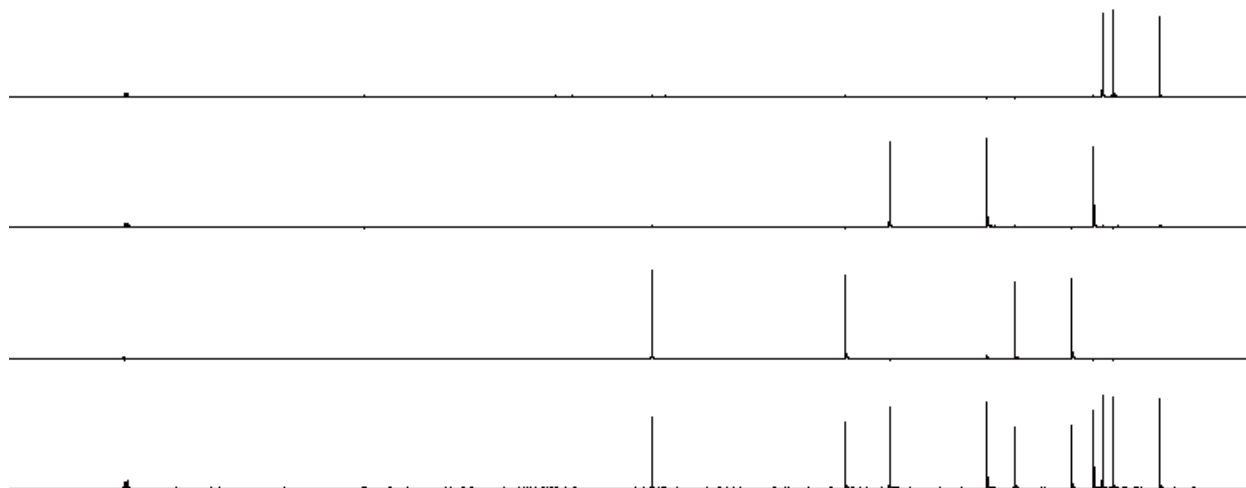
- 4.1 Type command *c13* to setup standard parameters for 1D carbon spectrum.
- 4.2 Set *nt=4* or 8 to acquire an 1D carbon spectrum, and set the chemical shift reference and spectral width, remember all carbons without proton attached, including the solvent peak will not show on the DEPT spectrum.
- 4.3 Type *dept* to setup standard parameters for DEPT experiment.
- 4.4 Check and/or change the following important parameters:
 - ss=4* steady-state pulse or dummy scans
 - pw*=the value of 90° pulse width for C13 channel; Check the last page of the log book.
 - tpwr*=the value transmitter power of C13 for 90° pulse width; Check the last page of the log book.
 - pp*=the value of proton 90°-pulse width from decoupler channel; Check the last page of the log book.
 - pplvl*=the value of proton 90°-pulse transmitter power from decoupler channel; Check the last page of the log book.
 - d1=5* relaxation time
 - j=140* average C-H coupling constant;
 - nt=32* or more number of scans, A multiple of 16 is suggested.
- 4.5 Type command *ga* to acquire data.

Step 5. Data Processing

- 5.1 After the acquisition, type *ds(1)* to display the first spectrum.
- 5.2 Phase the spectrum and select a proper threshold by using menu button of **th**. Then type **fp**.
- 5.3 Enter *autodept* to analyze and display arrayed spectra of CH_x, CH, CH₂ and CH₃ and print out DEPT spectrum. There are several ways to process the arrayed spectra. You could use *adept* and *dssa*, then *pldept* to plot the spectra.

Step 6. Exit and Logout

See Experiment One



vs	sp(ppm)	wp(ppm)	first	last	step
43.7	5.77	136.87	1	4	1

DEPT spectrum of Menthol in CDCl₃ on INOVA600. pw=12 p1=22 tpwr=60 pp=12.2 pplvl=56 J=140 dm='nny' dmm='ccw' dmf=8000 dpwr=35 mult=arrayed (0.5,1,1,1.5).

Note:

This experiment takes four times of the acquisition time of your 1D ¹³C spectrum that reaches a good enough S/N ratio. For example, your 1D carbon takes 256 scans (about 15 minutes) to get a good spectrum, then your DEPT needs about one hour (15 x 4=60 minutes).

Experiment 7: INEPT

Sample to be used: 30% Menthol in CDCl₃

Step 1. Login The Computer System

See Experiment One

Step 2. Change Sample

See Experiment One

Step 3. Lock And Shim The Magnet

See Experiment One

Step 4. Setup Parameters And Run Experiment

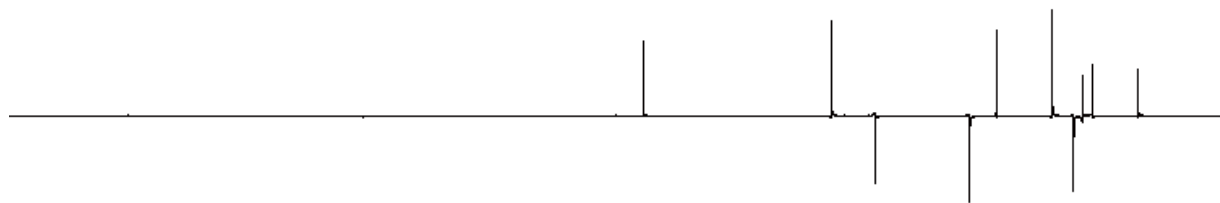
- 4.1 Type command *c13* to setup standard parameters for 1D carbon spectrum.
- 4.2 Set *nt=4* or 8 to acquire an 1D carbon spectrum, and set the chemical shift value.
- 4.3 Type *inept* to setup standard parameters for DEPT experiment.
- 4.4 Check the following important parameters:
 - ss=4* steady-state pulse or dummy scans
 - pw*= the value of 90° pulse for carbon-13; Check the last page of the log book.
 - tpwr*= the value of transmitter power of 90° pulse for C13 channel; Check the last page of the log book.
 - pp*= the value of proton 90° pulse width from decoupler channel; Check the last page of the log book.
 - pplvl*= the value of proton 90°-pulse power from decoupler channel; Check the last page of the log book.
 - d1=5* relaxation time
 - j=140* average C-H coupling constant;
 - mult=3* multiplicity to make CH, CH₃ up and CH₂ down;
 - nt=64* number of scans, A multiple of 16 is suggested.
 - dm='nny'* setting for coupled spectrum;
 - focus='y'* refocusing for coupled spectrum;
 - normal='y'* normal multiplets in coupled spectrum
- 4.5 Type command *ga* to acquire data.

Step 5. Data Processing

- 5.1 After the acquisition, the first spectrum will be displayed automatically.
- 5.2 Phase the spectrum, if necessary.
- 5.3 Type *pl pscale pap page* to plot the INEPT spectrum.

Step 6. Exit and Logout

See Experiment One



vp
50.0

cr
70.87

vs
50.0

delta

INEPT spectrum of Menthol in CDCl_3 on INOVA600. pw=11 p1=22 tpwr=60 pp=12.2 pplvl=56

Experiment 8: Presaturation and Water Suppression

Sample to be used: 10% Strychnine in CDCl₃

Step 1. Login The Computer System

See Experiment One

Step 2. Change Sample

See Experiment One

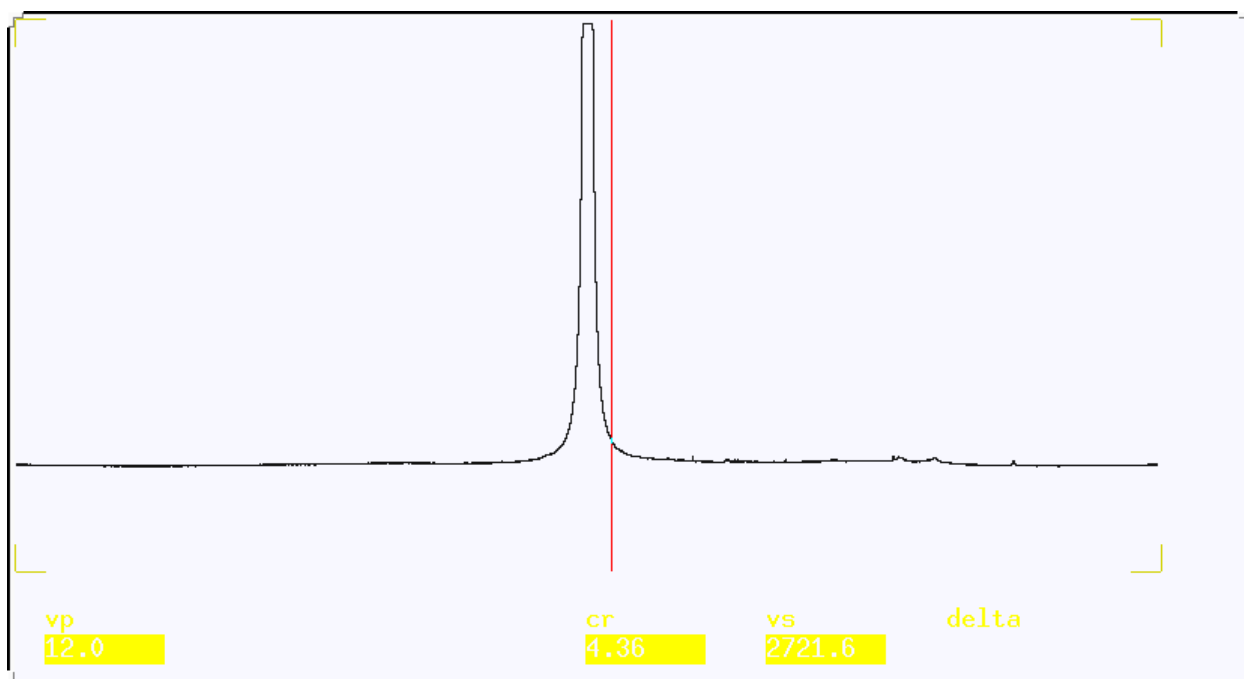
Step 3. Lock And Shim The Magnet

See Experiment One

Note: For the samples using H₂O + D₂O as solvent, the water peak is huge. To be able to see other signals the water peak need to be suppressed more efficiently. There are several aspects we need to emphasize here: 1) Tune the probe on your sample. 2) Use gradient shimming to get a good shimming. 3) Put the transmitter frequency on the water peak.

Step 4. Setup Parameters and Run Experiment

- 4.1 Load your sample into the probe as usual. Type *h1('d2o')* *su* to load the proton experiment parameters. Because of the huge water signal, the receiver will be overflowed if you start to acquire the data using the default value. To avoid the receiver overflow, do as follows: Type *gain?* to check the value of the *gain*. Change the *gain* value to a smaller value. The *gain* value could be set as small as 1. When acquiring the data. If you still get an “ADC overflow” error message after you set *gain=1*, then the *pw* value needs to be set to a smaller value until no “ADC overflow” message is shown. If you have less than 2% water in the solvent, then you could use the standard proton parameters.
- 4.2 After acquisition completes, type *aph* for automatic phasing and do any necessary manual phasing. At this point spectrum is only the water peak.



Plasma sample in 90% H₂O + 10% D₂O without suppression.

- 4.3 Set the reference peak, then move the red cursor to the peak to be saturated and type the *nl* and *sd* commands to set the saturation peak.
- 4.4 Type *presat* to retrieve the standard file for the presaturation experiment. Check and change the following parameters: *ss=4*, *nt=8*, *d1=0.2*, *satdly=1*, *tof=dof*; *satfrq=dof*. *satpwr=6* (Min=1, Max=12 step by 1 unit), *spin=0* and finally, type *su* to set up the parameters. Reset the gain by typing *gain=5* or *10*, *pw=5* etc..

ACQUISITION	SAMPLE	PROCESSING	FLAGS
sfrq 599.738	date Jun 3 2005	lb 0.20	composit n
tn H1	solvent cdc13	sb not used	il n
at 1.598	temp not used	gf not used	in n
np 25570	DECOUPLING	fn not used	dp y
sw 8000.0	dn H1	math f	hs nn
fb not used	dof 534.6		SATURATION
bs 16	dm nnn	werr react	sspul n
ss 4	dmm w	wexp procplot	satpwr 2
tpwr 56	dpwr 0	wbs testsn	satfrq 534.597
pw 5.0	homo n	wnt	satdly 1.000
p1 0			satmode ynn
d1 0.200			
d2 0			
tof 534.6			
nt 4			
ct 0			

Presat parameters.

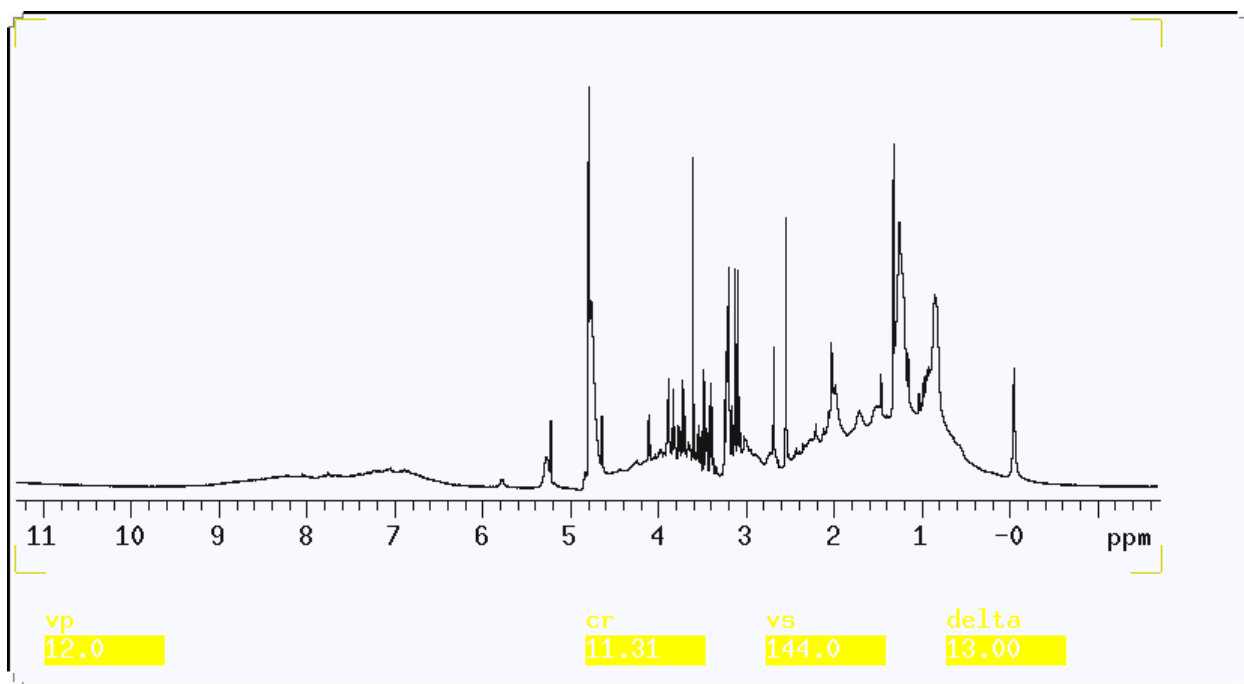
- 4.5 Type *ga* to acquire data. A spectrum will be displayed when acquisition is finished.
- 4.7 Check if the peak of interest is efficiently removed by the pulse in the resulting phased spectrum. If not, increase *satpwr* by 2 units and repeat the above experiment (The maximum *satpwr* 16). If the water peak is still unable to suppressed, please contact Dr. Wu for help. If yes, set *nt* between 64 and 128, then enter *ga* to acquire data.

Step 5. Data Processing

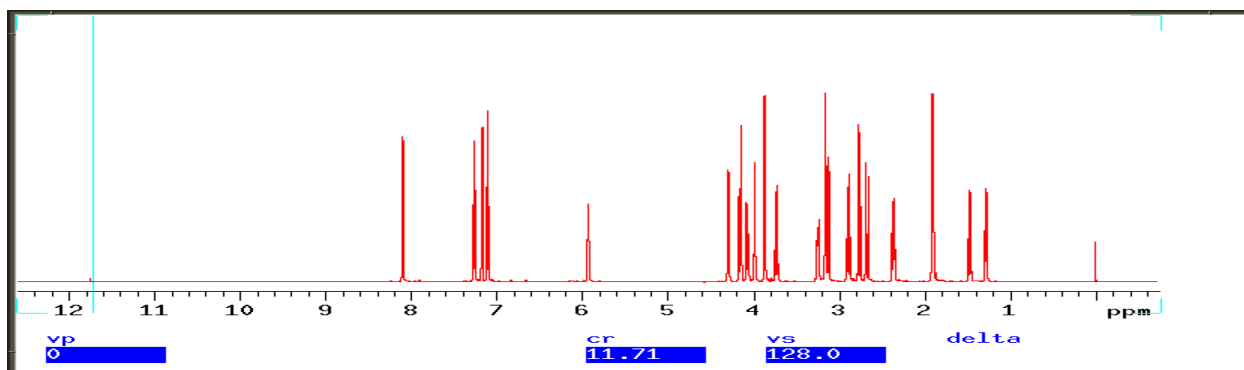
The data processing for the Presat experiment is same as that of 1D Proton experiment. See Experiment One.

Step 6. Exit And Logout

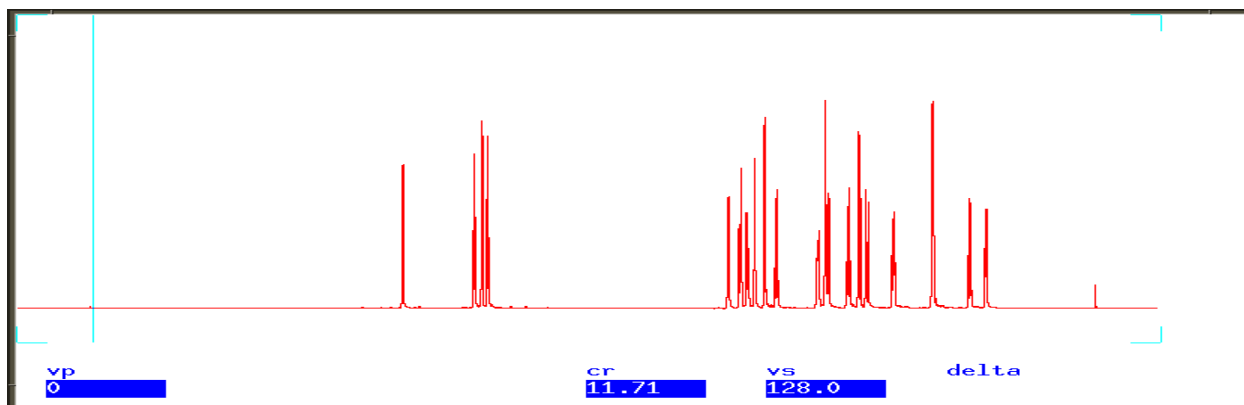
See Experiment One



Plasma sample in 90% H₂O + 10% D₂O after the water peak suppressed.



Normal 1D proton spectrum of strychnine in CDCl₃.

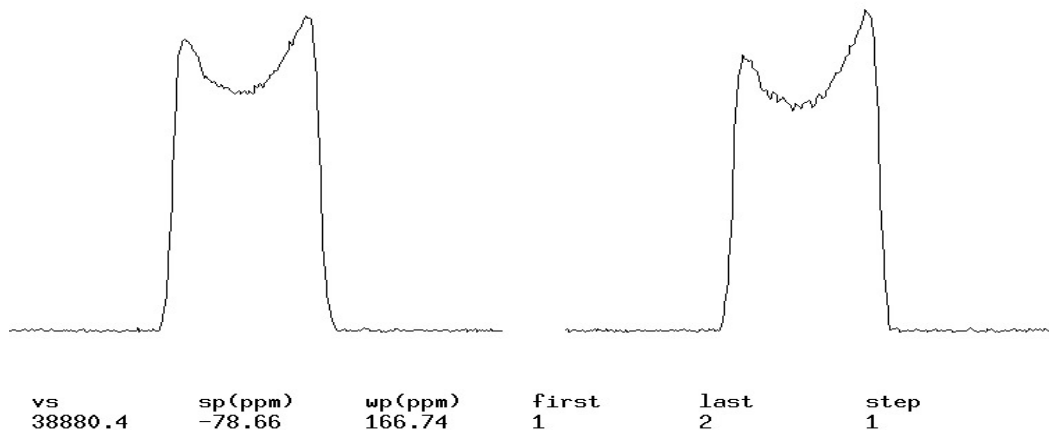


Same sample, but the peak at 6 ppm was suppressed.

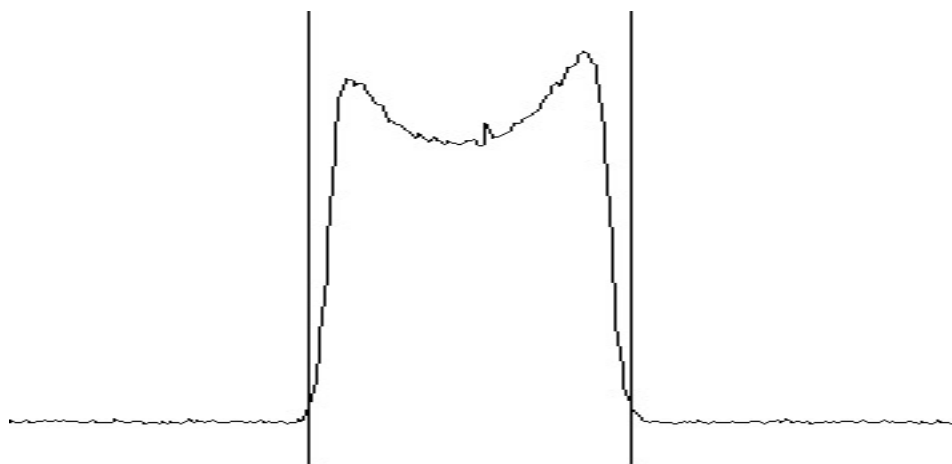
Experiment 9: Gradient Shimming

Sample to be used: 2% H₂O in doped D₂O

- Step 1.** Load your sample into the probe as usual. Type *h1('d2o')* *su* to load the proton experiment parameters. Ask an NMR staff person to help you tune the probe. Lock the machine and shim manually.
- Step 2.** Because of the huge water signal, the receiver will be overflowed if you start to acquire the data using the default value. To avoid the receiver overflow, do as follows:
Type *gain?* to check the value of the *gain*. Change the *gain* value to a smaller value. The *gain* value could be set as small as 1. When acquiring the data. If you still get an “ADC overflow” error message after you set *gain=1*, then the *pw* value needs to be set to a smaller value until no “ADC overflow” message is shown. Save the spectrum and change to another experiment (*jexp2*) to do gradient shimming.
- Step 3.** Turn on the Pulsed Gradient Driver module in the console (ask an NMR staff person for help if this is the first time you do this)
Type *pfgon='ny'*
Type *gmapsys* and press return.
Click on **Set Params > Gradient, Nucleus > Pfg H1 > Return > Go, dssh**
You may set the *pw*= “90 degree pulse” and *p1*= “180 degree pulse” these numbers are written on the log book of each instrument.
After acquisition completes, there are two broad peaks displayed. If the peaks do not look like as following, then there is a problem. You may have to talk to our NMR center staff.



The click **find gzwin**, computer will find the gradient shim region.

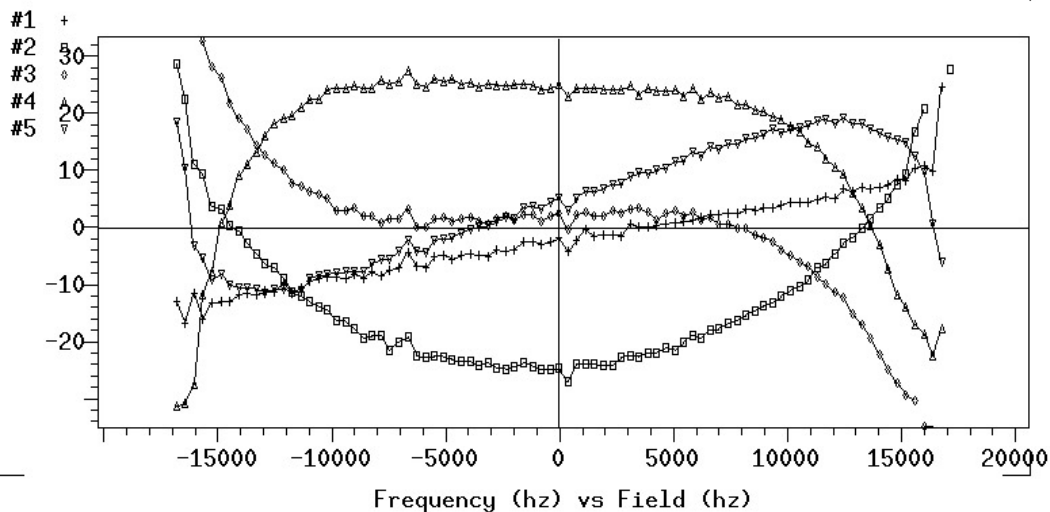


Then type `gmapsys`

(Shimming size can be changed now by typing `gysize=7`)

Click on **Shim Maps > Make Shimmap**, then type a file name when prompted.

(file is saved in directory `/vnmrsys/gshimlb/shimmaps`)



After you finish mapping,

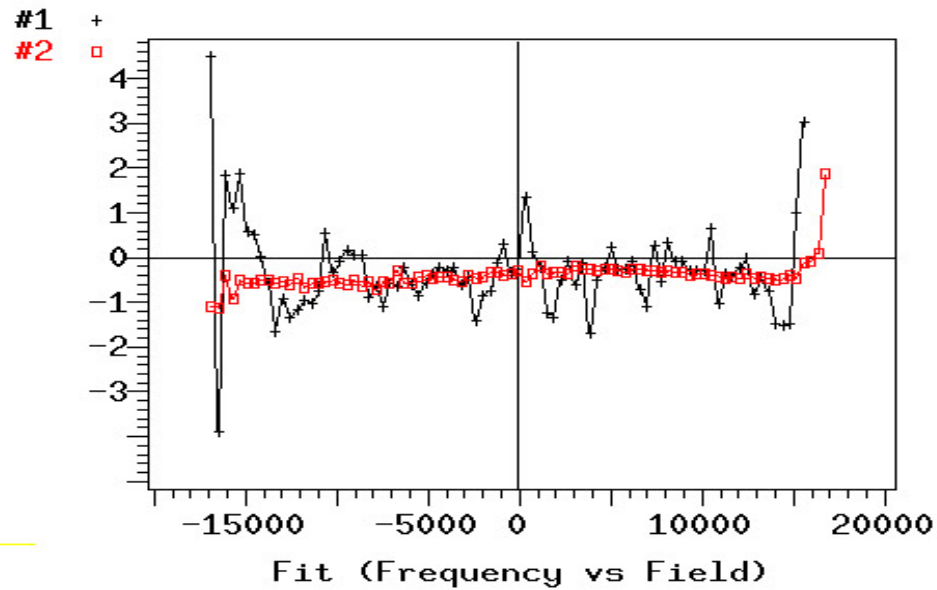
Click on **Return > Display > Display Shimmaps**

(lines should be smooth in the shimmap)

Click on **Return > Autoshim on Z**

The map rms err should be smaller than 1.00.

Click on **Set Shim**



Finishing:

Type **Pfgon='nnn' su**

Turn off the pfg module to standby.

Save the shim file `svs('shim_021909')`

Gradient Shim On VNMRS System:

Same concept, but there is a little difference. Type `gmapsys`, a new window will come up. Click **Acquire Trial Spectrum**, That is same as **Go dssh** icon as above. If everything is OK, then click **Make Gradient map**, you may have to input the map name. After completed, then click **auto gradient shim on Z**. Save the new shim file.

Experiment 10: COSY

Step 1. Login The Computer System

See Experiment One

Step 2. Change Sample

See Experiment One

Step 3. Lock And Shim The Magnet

See Experiment One

Step 4. Setup Parameters And Run Experiment

- 4.1 Run a proton 1D spectrum by using proton standard parameters. (See **Experiment One**)
 4.2 Set the two red cursors to define the desired *sw* (spectrum width); type *movesw* then *ga*,
 Check the new spectrum and make sure no peak is fold in. Save this spectrum in case for
 later reference. Type **COSY** on the command line and type *dg* to show the parameters.
 Check the following parameters:

ss=4 dummy scans for COSY
d1=2 delay; set to 2 seconds.
fn1=2048 zero-fill the f1 dimension to 2K data points.
tpwr=xx transmitter power of the 90°-pulse-width of proton channel: check the last
 page of the log book.
pw=xx.x 90° pulse width for proton: check the last page of the log book.
nt=8 minimum *nt* is 8 (16, 32). The larger the value, the better the spectrum.
ni=128, 256 number of FIDs, (128, 256,512). The larger the value, the better.

Make sure *sw = sw1* and *fn = fn1*

Type *time* to check the total experiment time. You can increase or decrease the value of
nt or *ni* to fit your allotted time. **Turn the spin off** and type *ga* to start the experiment.
 After acquisition, save the data.

dg									
ACQUISITION	SAMPLE			PROCESSING	2D PROCESSING				
sfrq	399.941	date	Jun 3 2005	lb	0.20	lb1	0.32		
tn	H1	solvent	cdcl3	sb	not used	sb1	not used		
at	0.197	file	exp	gf	not used	gf1	not used		
np	2048	DECOUPLING		awc	not used	awc1	not used		
sw	5203.3	dn	H1	lsfid	not used	wtfile1			
bs	16	dof	-630.7	phfid	not used	proc1	ft		
ss	2	dm	nnn	wtfile		fn1	2048		
tpwr	58	dmm	c	proc	ft	FLAGS			
pw	23.0	dmf	200	fn	2048	il	n		
p1	23.0	dpwr	30	math	f	dp	y		
d1	1.000	homo	n			hs	nn		
d2	0	2D ACQUISITION		werr	react	SPECIAL			
tof	207.0	sw1	5203.3	wexp	procplot	temp	not used		
nt	4	ni	216	ubs		relay	0		
ct	0			wnt		tau	0		

COSY parameters.

Step 5. Data Processing and Spectrum Printing

- 5.1. Reload the data:

Click on **Main Menu** and **File**, then highlight the file name and click on **Load**

Experiment 11: HETCOR

Step 1. Login The Computer System

See Experiment One

Step 2. Change Sample

See Experiment One

Step 3. Lock And Shim The Magnet

See Experiment One

Step 4. Setup Parameters And Run Experiment

- 4.1. In exp1, run a 1D proton spectrum by using standard parameters. After phasing and setting reference, use the two red cursors to narrow the spectrum of interest by 1ppm upfield and 1ppm downfield. Type *movesw* to change the spectral width.
- 4.2. Type *ga* to run the 1D proton experiment with a modified *sw*. Phase the spectrum.
- 4.3. Type *jexp2* to joint exp2. Run a 1D-carbon experiment. After phasing and setting the reference, narrow the spectrum of interest using the two red cursors. Type *movesw* to change the *sw*. Remember you will not see these carbons without proton attached on the HETCOR. So set the correct *sw* will increase your spectrum quality!
- 4.4. Type *ga* to run the 1D carbon experiment with a new *sw*. Phase the spectrum.
- 4.5. Type *hetcor* to set up a standard HETCOR experiment. Remember: your proton spectrum is in exp1.
- 4.6. Double-check the following two pairs of parameters (the correct values are listed on the last page of the log book):

tpwr transmitter power for carbon
pw 90° pulse for carbon

pp 90° pulse for proton decoupler channel
pplvl proton pulse power for decoupler channel
 (*pp* and *pplvl* should be as same as the ones in DEPT experiment in Experiment 6)

After entering correct values for the above parameters, check the following parameters:

ss=4 dummy scans
sw= *sw* should equal to the *sw* value in exp2 for carbon domain
sw1= *sw1* should equal to the *sw* value in exp1 for proton domain;
dof= *dof* should equal the *tof* value in exp1 for proton;
*nt=n*16* acquisition scans of multiple of 16;
ni=256 number of increments in 1st dimension;
np=2048 number of points to record FID;
d1=3 carbon relaxation time

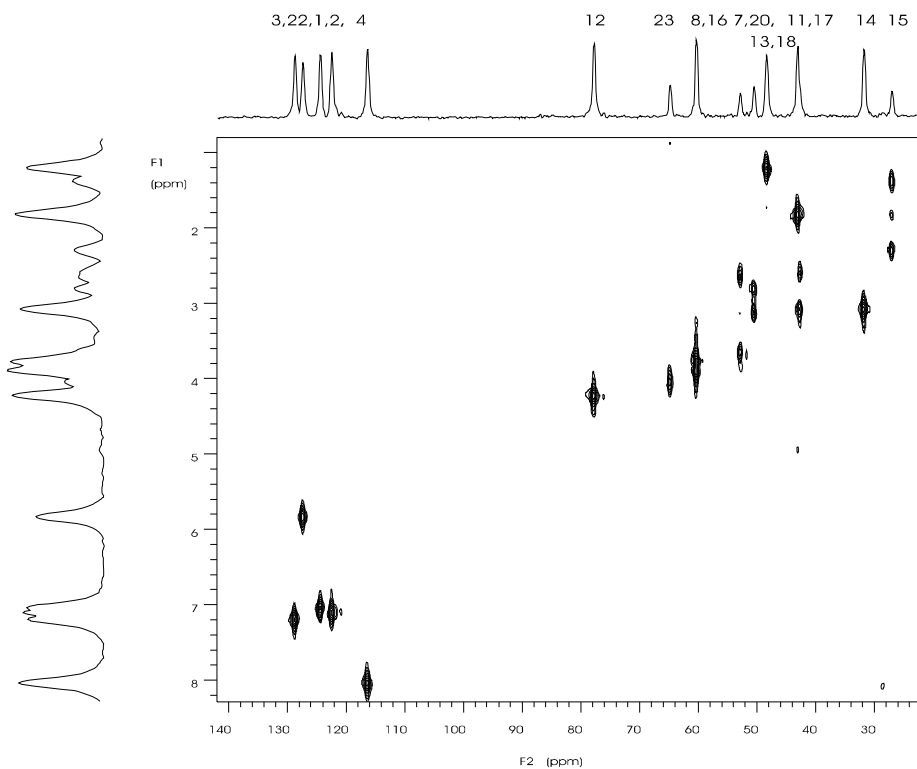
- 4.7. Type *time* to check the experiment time. *d1* can be adjusted to fill the allotted time.
- 4.8. Turn the spin off and do any needed minor shimming. Enter *ga* to acquire data.
- 4.9. Save the spectrum by typing *svf('hetcor_mydata')*

Step 5. Data Processing and Spectrum Printing

- 5.1. Recall the data "hetcor_mydata.fid"
Click on **Main Menu** and **File**, then highlight the file name and click on **Load**
- 5.2. Type *wfi2da* or follow the detailed processing method in experiment 17.
- 5.3. Click on **Return**, **Size** and **Center** buttons to place the spectrum in the middle of the screen.
- 5.4. Adjust the vertical scale of the 2-D spectrum using the **vs+20** and **vs-20** button to eliminate the unnecessary background color.
- 5.4.1. Click on **Proj**, **Hproj(max)** and **Plot** buttons to display the horizontal projection 1-D spectrum on the top of the 2-D spectrum. Use the MMB to adjust the vertical scale of the 1-D projection spectrum.
- 5.6. Click on **Vproj(max)** and **Plot** buttons to display vertical projection 1-D spectrum on the left of the spectrum. Use the MMB to adjust the scale of the 1-D spectrum.
- 5.7. Type *pcon page* to print the 2-D spectrum with 1-D projection spectra.

Step 6. Exit And Logout

See Experiment One



HETCOR Spectrum of strychnine in CDCl₃.

Experiment 12: 1D NOE

Sample to be used: 10% Strychnine in CDCl₃

Step 1. Login The Computer System

See Experiment One

Step 2. Change Sample

See Experiment One

Step 3. Lock And Shim The Magnet

See Experiment One

Step 4. Setup Parameters And Run Experiment

- 4.1 Run a standard proton spectrum and save the file.
- 4.2 Put the cursor on the peak to be irradiated, then type *nl sd* to display the frequency, shown as *dof=xxx.xx* on the top of the screen. Write down this first *dof* value (If the peak is a multiplet, put the cursor in the middle of the multiplet and type *sd*). Next, move the cursor to a no-peak region close to the peak to be irradiated, Type *sd* to display the second *dof* value. Make sure to record this value.
- 4.3 Type *presat* to load standard file for the presaturation experiment. Check and change the following parameters: *ss=4, nt=8, gain=10, d1=2, satdly=1, satfrq=the first dof value written down, satpwr=2* (Min=1, Max=15 step by 1 unit), and type *su*. Finally, turn off the *spin*. Type *ga* to run a quick spectrum. Check if the irradiated peak has disappeared from the resulting spectrum. If not, repeatedly increase *satpwr* by 2 units and run the experiment again until the peak has disappeared.
- 4.4 Change the *nt* value to *128* or *256* and type *ga* to acquire data for the first spectrum. After the acquisition is finished, save the spectrum.
- 4.5.1 **ONLY** change the *satfrq* parameter to the second *dof* value recorded previously, then type *ga* to obtain a second spectrum. Save this new spectrum.

Step 5. Data Processing

- 5.1. Type *jexp5* to go to Exp5 and load the first spectrum by the following procedure (*you must use Exp5 to do this operation*): Click on **Main Menu**, **File** and highlight the first spectrum file, then click on **load**. Type *lb=5 wft* to show the spectrum.
- 5.2. Type *jexp1* to go to Exp1. Load and process the second spectrum by the procedure as described in step 5.1.
- 5.3. Type *spsub* to subtract the second spectrum (in Exp1) from the first (in Exp5) and then type *jexp5* and *ds* to show the resulting spectrum in Exp5. Type *vp=50* to move the spectrum to the middle of the screen.
- 5.4. Plot the spectrum.

Step 6. Exit And Logout

See Experiment One

Experiment 13: 1D Carbon with Complete Fluorine Decoupling by Using Wave Function Generator

Sample to be used: 20% Perfluoro-2-methyl-2-pentene

Step 1. Login The Computer System

(See Experiment One)

Step 2. Change Sample

(See Experiment One)

Step 3. Lock And Shim The Magnet

(See Experiment One)

Step 4. Setup Parameters And Run Experiment

4.1 type **f19** to load standard fluorine parameters with CDCl_3 as solvent. Run a F19 spectrum and save the file.

4.2 Find the value of **tof** by typing **dg** and record this value. **tof** is the center frequency of the observe transmitter.

4.3 Find the transmitter frequencies for each peaks as follows:

4.3.1 Put the cursor on a peak and type **movetof**. Write down the new **tof** value after typing **dg**.

4.3.2 Load the original spectrum again and find the **tof** value for another peak as in step 4.3.1.

4.3.3 Repeat step 4.3.1 and 4.3.2 until all the frequency values for all peaks are recorded.

4.4 Calculate the **offset** value.

4.4.1 Subtract the transmitter frequency value of each peak recorded in step 4.3 from the **tof** value of the spectrum recorded in step 4.2. Record these values.

Remember, always subtract the frequency value of a peak from the **tof** value, so that when the frequency of a peak is higher than the **tof** value, you get a positive **offset** value and when the frequency of a peak is lower than **tof**, you get a negative **offset** value.

4.5 Use Waveform generator to generate a shaped decoupling sequence:

4.5.1 Load the F19 spectrum and type **wft**

4.5.2 Click **Pbox** button on the menu bar

Click **Het-dec**

Click **Adiabatic** and then type 300 after J in Hz on the top of the screen for C-F coupling.

Click **Options**

Click **Offset** and input the **offset** value of the first (leftmost) peak which should be decoupled.

Click **Bandwidth** and input 4000----- the area will be decoupled.

Click **Return**.

Click **WURST**, three parameters will be displayed for the decoupling on the top.

4.5.3. Click **Options** and repeat the remaining steps in the step 4.5.2. until all the **offset** value are input.

Click Close.

4.5.4. Click **Name** and give a file name for the shaped pulse.

Click **Close**.

The computer will ask you to

Enter reference 90 degree pulse width (μse): (F19 90 degree pulse width)

Enter reference power level: (power level when you measure the F19 90 degree)

A shaped pulse will be displayed on the screen.

Write down the following parameters:

dres=x

dmf=xxxxxx

Remember you shaped pulse file name.

4.5.5 Load the standard C13 experiment parameters by typing *c13*

Input following parameters:

dres = x

dmf = xxxxxx

dm = 'nny'

dmm = 'ccp'

dseq = 'shaped pulse file name'

dof = the *tof* of F19 spectrum

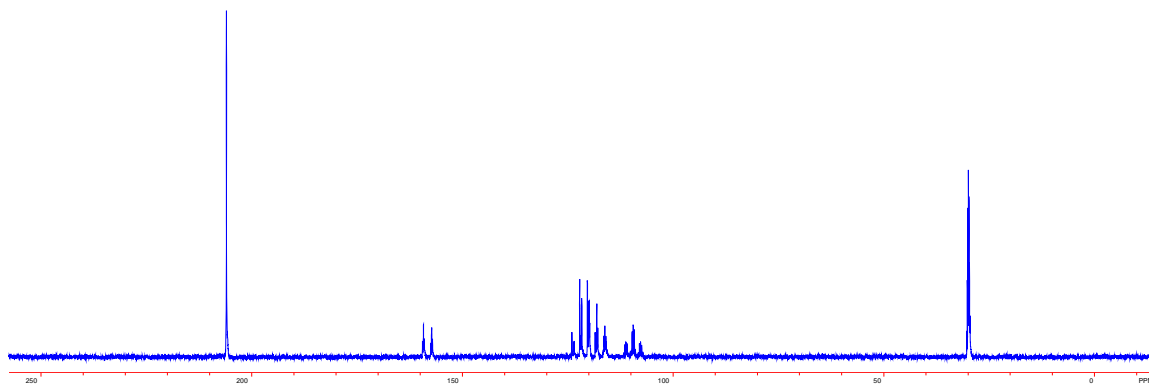
Type *ga* to acquire data.

Step 5. Data Processing

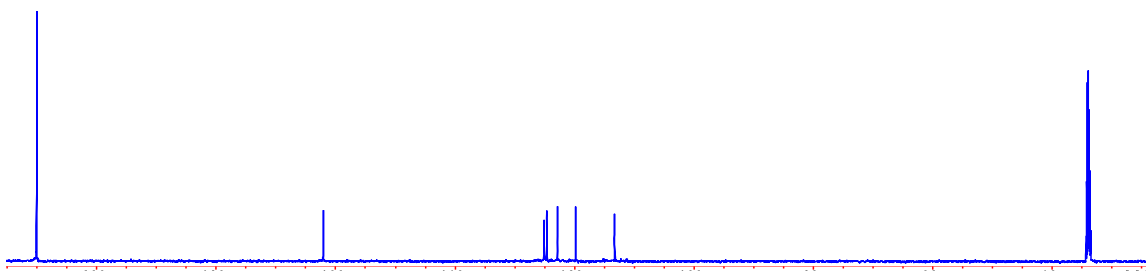
See steps in Experiment Two.

Step 6. Exit And Logout

See Experiment One.



¹³C spectrum of (CF₃)₂CCFCF₂CF₃ in Acetone_D6 was acquired on INOVA600 without ¹⁹F decoupling.



Fully ¹⁹F decoupled ¹³C spectrum of (CF₃)₂CCFCF₂CF₃ acquired on INOVA600.

Experiment 14: Variable Temperature Experiment (25 to 80 °C)

Sample to be used: 10% Strychnine in CDCl₃

Step 1. Login The Computer System

See Experiment One

Step 2. Change Sample

See Experiment One

Step 3. Lock And Shim The Magnet

See Experiment One

Note: Double check your solvent boiling point or freezing point. If you need much higher temperature or much lower temperature experiments, please let us know. We could help you. You may have to order a high pressure Liquid Nitrogen tank for Low temperature Experiments. The temperature range we have done on the Unity plus -120 °C – 120°C with a Broad Band Probe.

Step 4. Setup Parameters And Run Experiment

4.1 type *h1*('solvent') to load standard proton parameters and run a normal 1D experiment.

4.2 For a single temperature:

type *temp* to open the temperature control box. Click on and drag the temperature bar to the desired temperature. Wait until the temperature reading on the remote display reaches the desired value, then for another 5 to 10 minutes to let the sample reach the equilibrium temperature. Shim the magnet again and type *ga* to start acquiring the data.

Step 5. Data Processing

See Experiment One.

Step 6. Terminated the variable temperature function and exit

Click and drag the temperature control bar to 25°C. Wait until the temperature drops to around 25°C, and click the temperature off button. Close the temperature control window. Exit and logout.

Experiment 15: NOESY

The procedure for NOESY experiment is quite similar to COSY experiment (see experiment 9)

Step 1 Insert your sample and tune the probe on proton channel.

Step 2 Parameters Set-up and Run Experiment

Run a proton 1D spectrum by using proton standard parameters (See **Experiment One**)

Using two cursors to define the *sw* (spectrum width) just wide enough to include all peaks and then type *movesw* and *ga* to run another proton experiment with new *sw*. Save the spectrum.

Step 3 Type *NOESY* to load NOESY parameters.

Check the parameters:

pw= 90° pulse width of proton channel.

tpwr= transmitter power of the proton channel for 90° pulse width

d1=2

nt=16, or 32

ni=128 (or 256 or 512, depends on the machine time you have)

Type *time* to check how long the experiment it will take and adjust the *nt* and *ni* to fit your time signed up.

mix (mixing time)=0.3 The value is ranging from 0.1 to 0.6(ms) depends on the molecular size of your sample. To obtain best result, it is better to do a set of experiments with different *mix* value and chose a best spectrum.

fn1=2048; *fn*=2048 *np*=2048

Turn off spin, Double check the non-spin shims.

Type *ga* to start acquisition.

After the acquisition, save the spectrum.

Step 4 Processing and Printing

Reload your NOESY spectrum file by clicking on **Main Menu** and **File**, then highlight the file name and click on **Load**.

Type wft2da to do automatic weighting and Fourier transformation or follow the procedure in **Experiment 17** to process the data manually.

For a good NOESY spectrum, you should deoxygenate your sample.

Experiment 16: HMQC/HMBC

HMQC experiment only available on INOVA600 since the default probe is an Inverse Detection probe. If it is the first time you try to do this experiment, please ask Dr. Wang or Dr. Wu to assist you to set it up to avoid hardware damage. You may have to reconfigure the hardware for proper setup.

Step 1: Sign-up your time (at least 2 hours depending on your sample concentration) and contact the NMR staff so that we can help you to tune the probes and connect a microwave filter etc.

Step 2: Run 1D proton spectrum in experiment 1. Using two red cursor to select a reasonable spectrum width (cutting off no-signal area in both high field and low field) and type **movesw**. Type **ga** to run another proton spectrum with new spectrum width. Write down the parameters **tof** and **sw**, This is for your Proton region with the correct chemical shift reference.

Step 3: Change to experiment 2 by typing **jexp2** to run 1D carbon spectrum in experiment 2. Select reasonable spectrum width and run a carbon experiment again as same as in step 2. You don't have to see all the carbon signals, the solvent peak is enough. You only need to collect one scan. Make sure the solvent peak is set to the correct chemical shift, as well as the region of the spectrum that covers all your protonated carbons. Remember, HMQC will not show the carbons without proton attached. Write down the parameters **tof** and **sw**. (remember you will only observe the protonated carbon for HMQC). This is for your Carbon region with the correct chemical shift reference.

Step 4. Return to experiment 1 (typing **jexp1**), and type **hmqc**. If presaturation is required, type **HMQC**. The computer will load the pulse sequence with default parameters. The **sw** will be the same as that in the proton spectrum. Manually change the **sw1** to the numbers of **sw** written down from the carbon experiment in step 3 and change **dof** to the number of **tof** in carbon spectrum.

Check the two pairs of 90° pulse parameters from the back of the log book:

pw is the proton 90° pulse width and **tpwr** is the power.

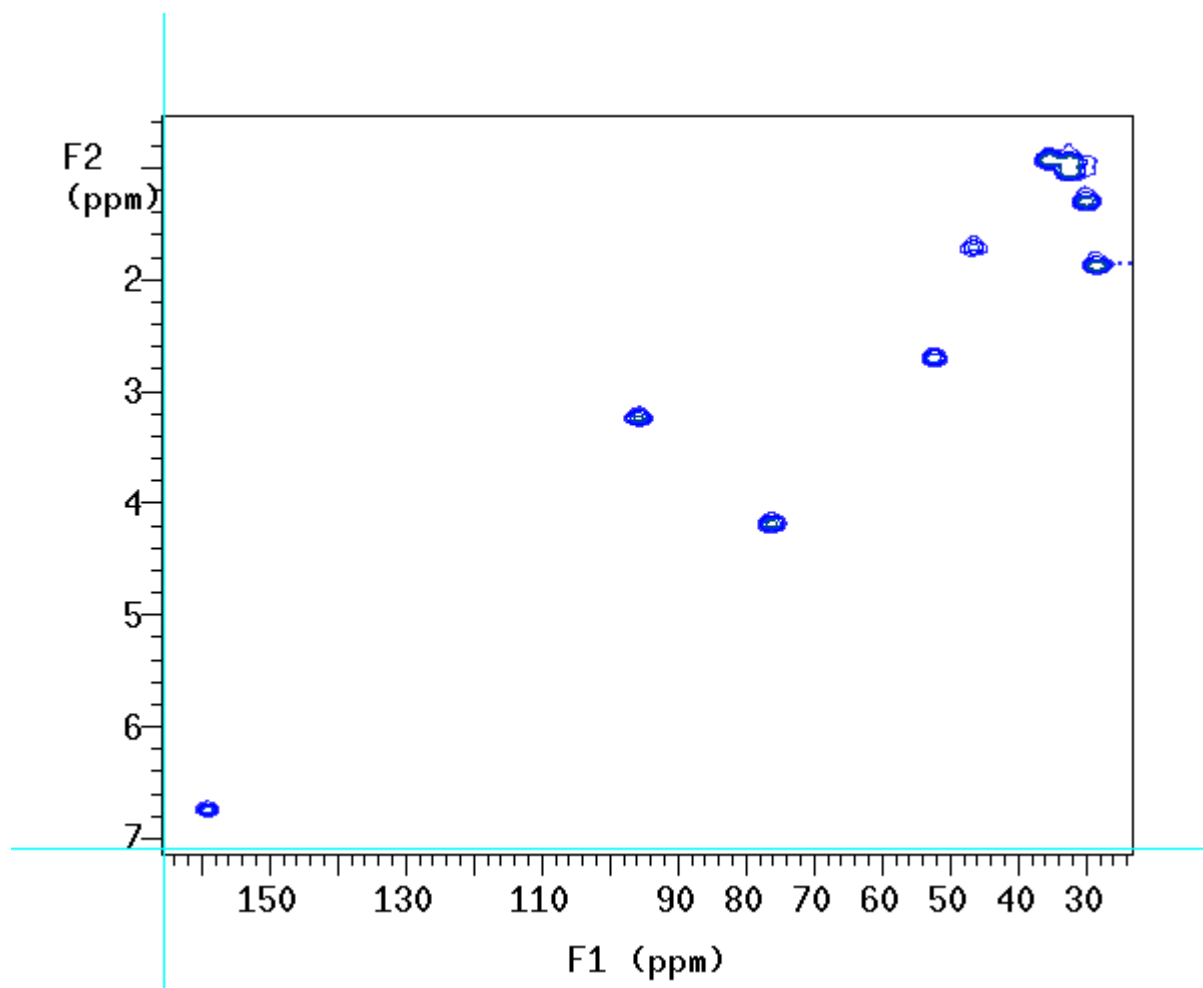
pwX is the **carbon decoupler** 90° pulse width and **pwXlvl** is the power.

ACQUISITION		SAMPLE		sw1	27285.1	2D PROCESSING	
sfrq	599.737	date	Jun 16 2004	ni	256	lb1	210.50
tn	H1	solvent	cdcl3	phase	arrayed	sb1	0.002
at	0.236	file	/export/home/~	PROCESSING		sbs1	-0.002
np	2048	vnmr1/vnmrSYS/ID_p~		lb	59.24	gf1	not used
sw	4341.2	robe/HMQC_yu_good.~		sb	0.035	awc1	not used
bs	not used	fid		sbs	-0.004	wtfile1	
ss	4	DECOUPLING		gf	not used	fn1	2048
tpwr	56	dn	C13	awc	not used	FLAGS	
pw	9.7	dof	105.7	wtfile		il	n
d1	0.900	dm	nny	proc		dp	y
d2	0	dmm	cgg	fn	2048	hs	yy
tof	-591.5	dmf	20000	math		f	mbond
nt	16	dpwr	45	PRESAT		SPECIAL	
ct	0	pwX	12.0	satflg	nn	temp	not used
		pwXlvl	58	satdly	0	null	0.3
		homo	n	satpwr	0	j	140.0
		2D ACQUISITION		satfrq	0	taumb	0

Type **time** to check the total experiment time.

Finally type **ga** to start the experiment. After finish the experiment, save the data and report to the staff to help you reconnect the cable.

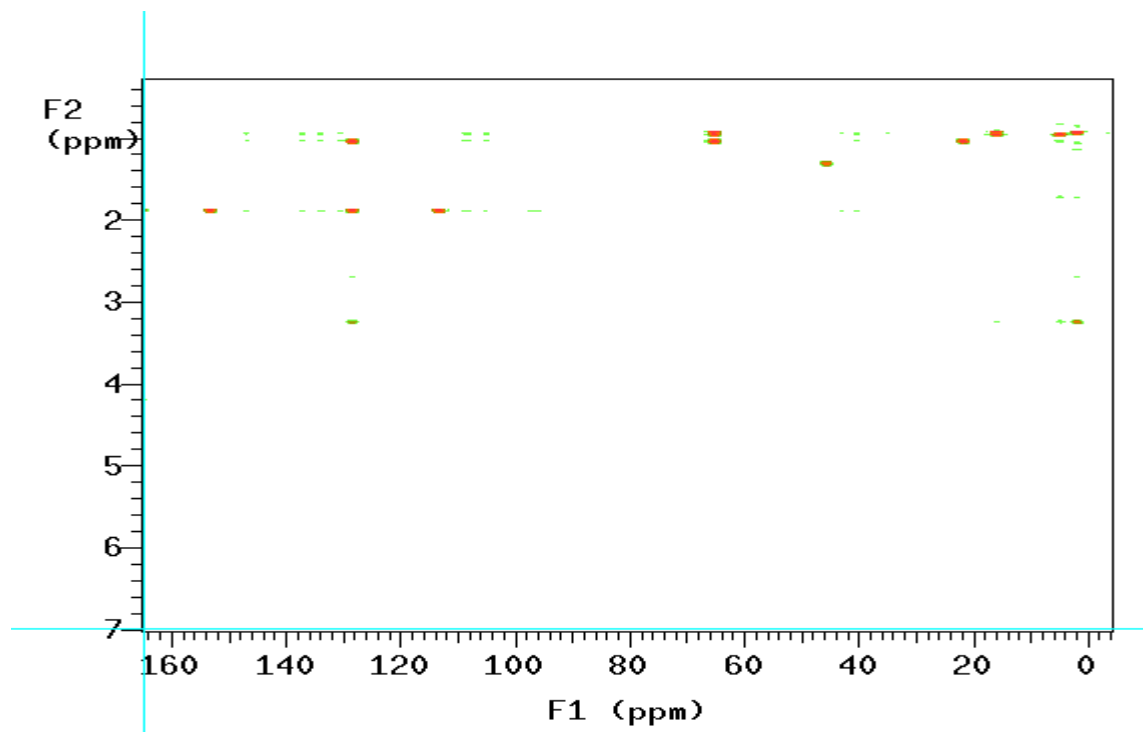
Using the same procedure for HECTOR to process the HMQC data.



HMBC experiment is the same kind of experiment, the difference is you have to input the parameter of j_{nxh} , that is the j coupling of three bond from proton to the carbon you are interested. The average number is 5 – 8 hz. Also you should double or triple of the nt scans, since HMBC is much less sensitive than the HMQC experiment. You may need little more samples.

HMBC parameters:

ACQUISITION		TRANSMITTER		HMBC		PROCESSING	
sw	4490.3	tn	H1	j1xh	137.0	sb	0.077
at	0.228	sfrq	599.737	jnxh	5.0	sbs	not used
np	2048	tof	-591.5	GRADIENTS		fn	2048
bs	16	tpwr	56	PFGflg	n	2D PROCESSING	
ss	8	pw	9.700	hsglv1	2000	sb1	0.004
d1	1.000	DECOUPLER		hsgt	0.002000	sbs1	not used
nt	32	dn	C13	SPECIAL		fn1	2048
ct	0	dof	128.0	temp	not used	SAMPLE	
2D ACQUISITION		pwxlv1	61	spin	not used	date	Jun 17 2004
sw1	27155.5	pwx	12,000	gain	2	solvent	cdc13
ni	512	dm	nnn	pw90	8.000	sample	undefined
phase	arrayed	dmm	ccc	sspul	n		
PRESATURATION		dmf	200				
satmode	n	dpwr	0				
satfrq	0						
satdly	0						
satpwr	0						



HMBC spectrum of strychnine in CDCl₃

Experiment 17: 2D Data Processing

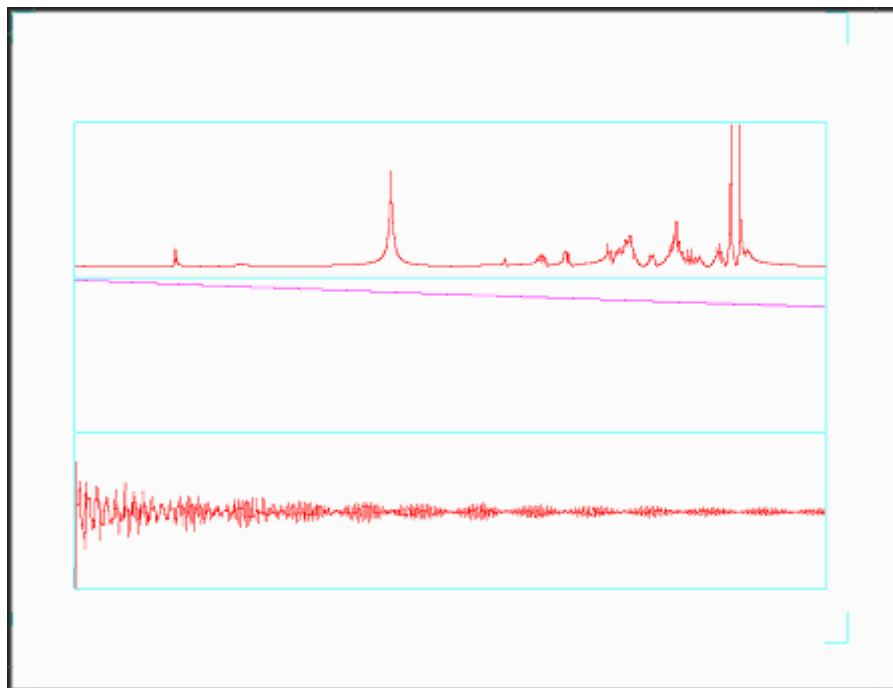
Step 1. Load the data

From the menu: **Main** → **File** → select the file you saved, then click **Load**.

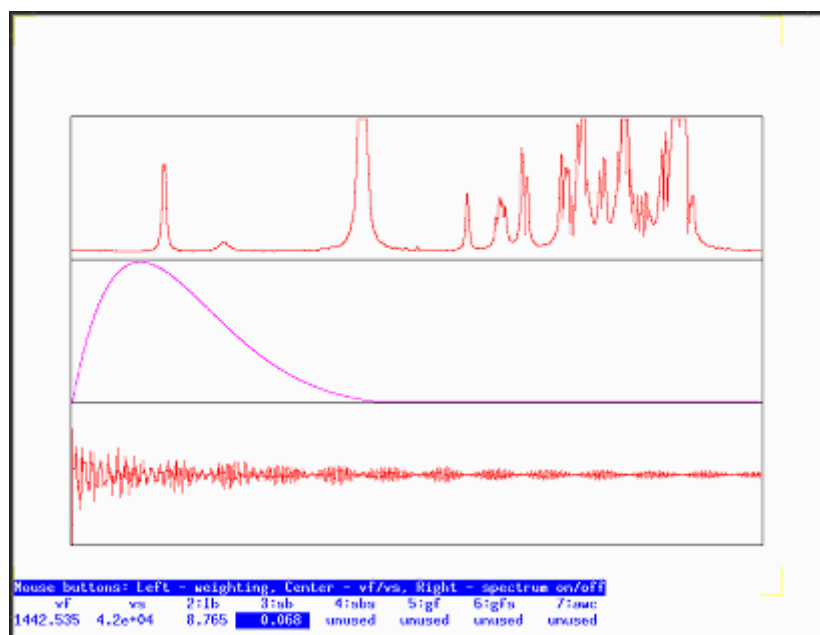
Step 2: Processing F2 dimension

From the menu: **Main** → **Process** → **Adj Weighting**

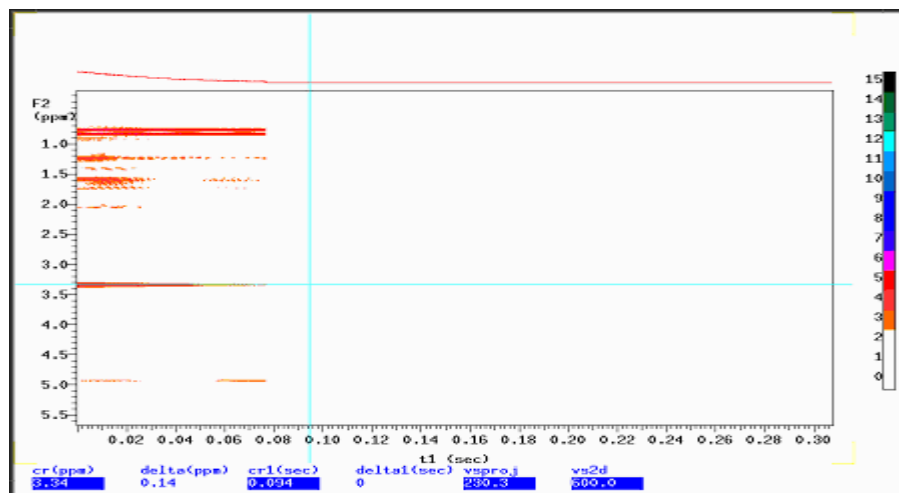
The following window will be displayed:



The top window is the spectrum that is the result after applying the window function and FT; the middle window is for the weighting function adjustment; the bottom window is the FID after applying the window function. From the menu, you could use **lb** (line broadening), **sb** (Sinebell weighting function), **sbs** (Sinebell squared weighting function), **gf** (Gaussian weighting function) and **gfs** (Gaussian squared weighting function) functions by clicking the icon. Then move the mouse to the middle window to adjust the window function. The purpose of this operation is to make the peak shape as following:



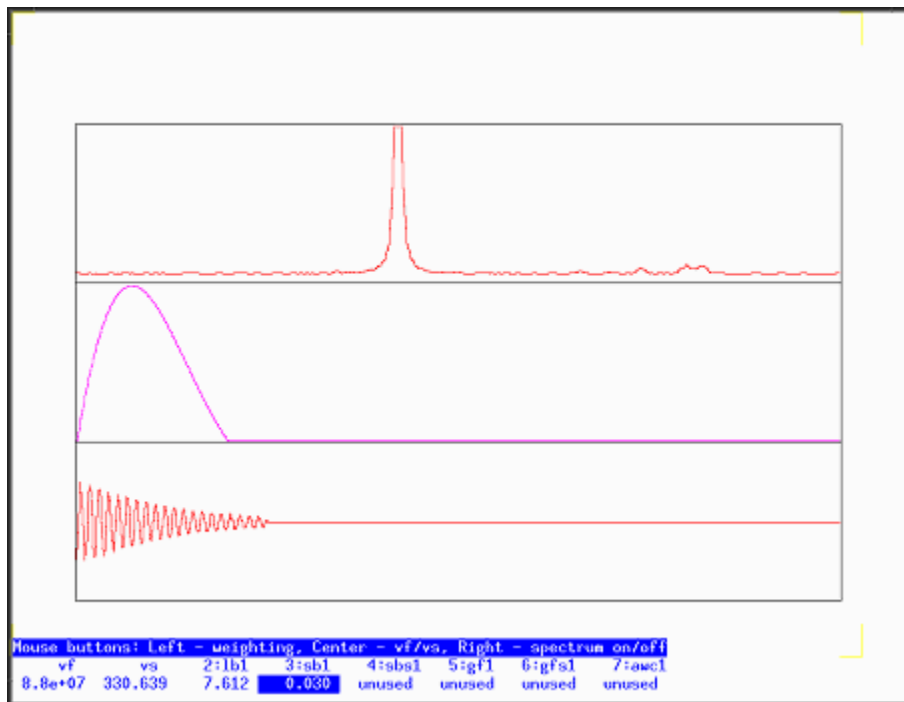
You could combine these window functions to change the shape of the peaks until you are satisfied with the spectrum. Then click **return**. If you acquired a phase sensitive 2D spectrum, there will be an icon “**phase F2**” on the menu, then you have to click **phase F2**. A 1D spectrum will be displayed. Phase it. If there is no “**phase F2**” icon, you acquired data is magnitude mode. You could click **Transform F2**. Computer will process the F2 dimension data. After it completes, a new window will be displayed.



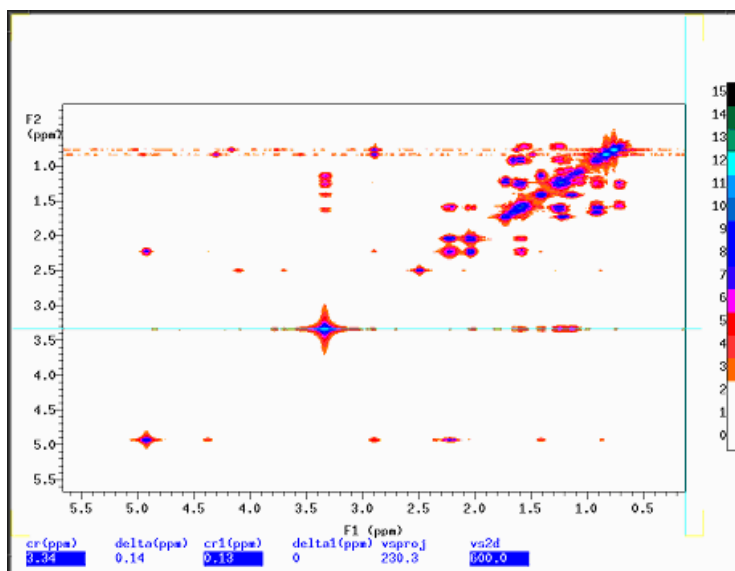
If there is nothing in the window, change **vs2d** parameter, by typing **vs2d=5000** or bigger. This will increase the display intensity level. Then click **Redraw**. The red lines are your data, and white area is zero filling.

Step 3. Process the F1 dimension:

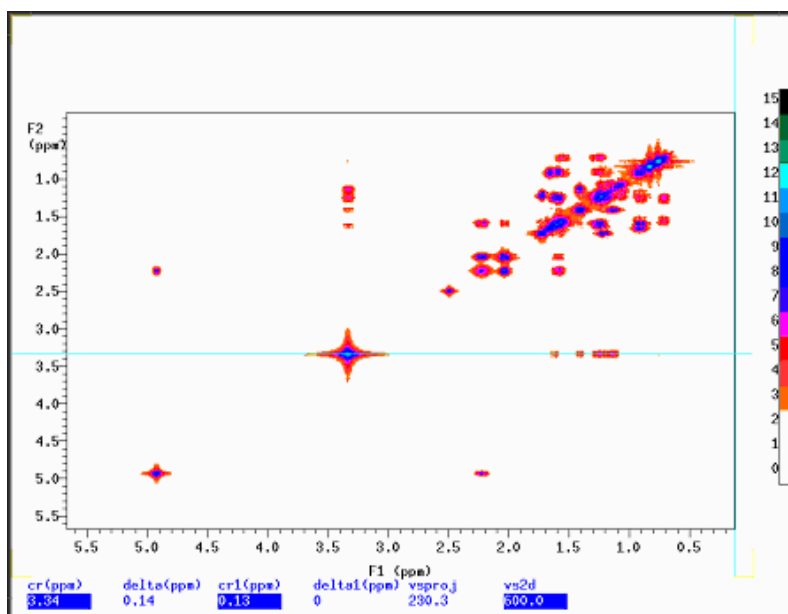
There will be red line in the middle of the spectrum, use mouse to move the line on a blue line, then click **Trace**. Then click **return** → **Adj Weighting**. A window will be displayed. Adjust the function as before.



Then click **return** → **F1 Transform**. The computer will process the F1 dimension. The 2D spectrum will be displayed on the screen after few seconds. If it is a COSY spectrum, you could type **foldt** to get rid of the unsymmetrical noise. Don't use **foldt** on NOESY!



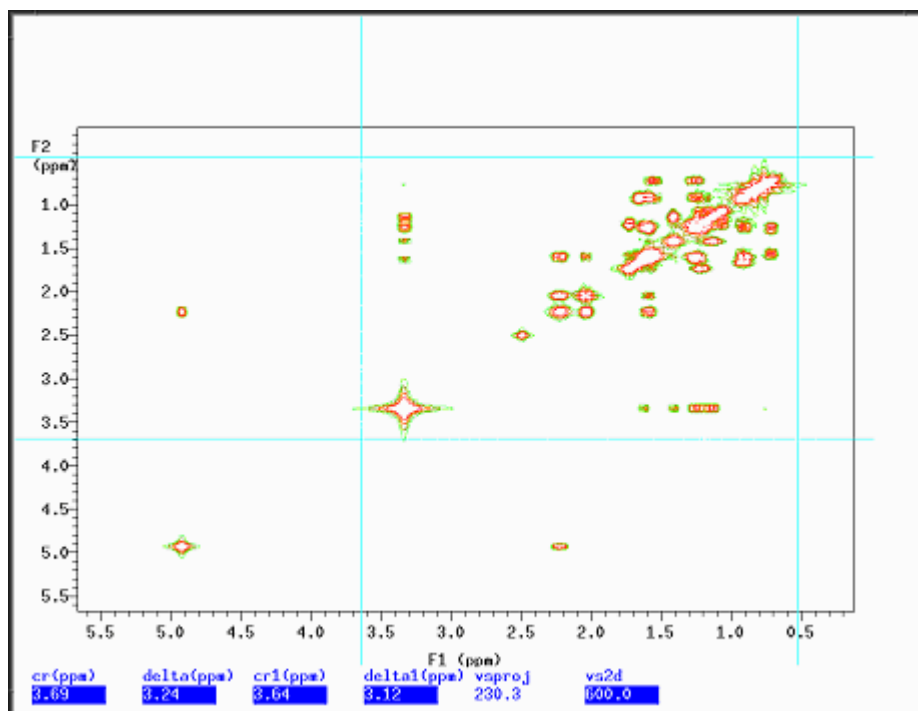
COSY spectrum before **foldt** operation



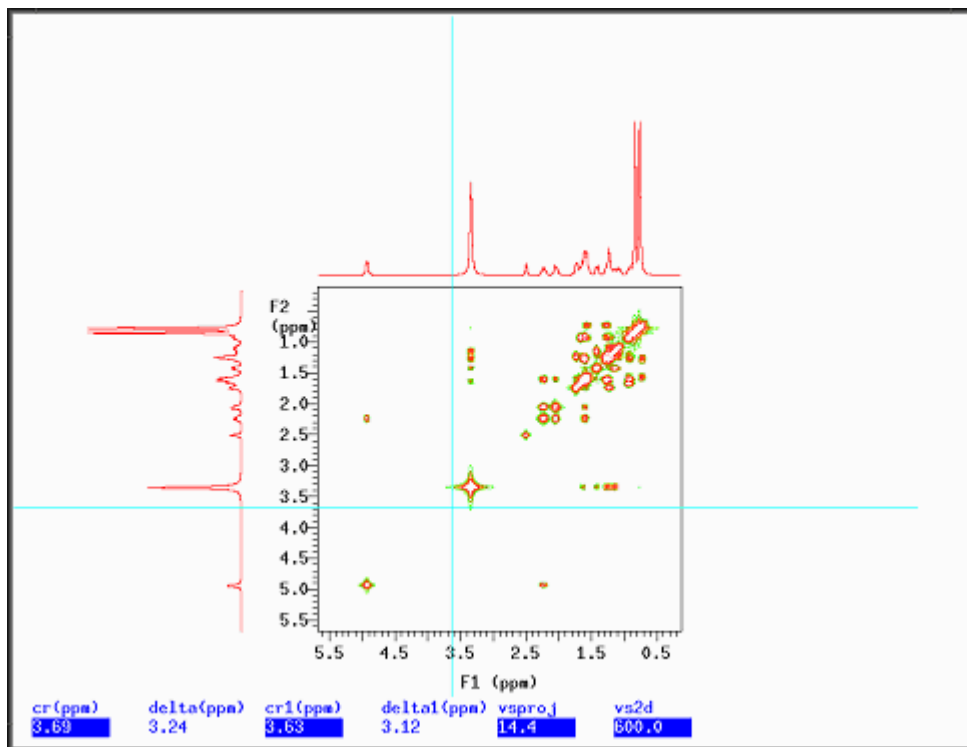
COSY spectrum after **foldt** operation

Step 4. Display and Printing:

On the menu, click **return** → **contour**, to display the spectrum as contour mode.
Click **return** → **size**, to change the window size.



Click **project**→**Hproj(max)** to display 1D project spectrum. Click **Vproj(max)** to display 1D project spectrum on the side. You want to plot them with the 2D spectrum, you have to click plot after you click **Hproj(max)** or **Vproj(max)**.



To add text by typing text('your_text'). To print the text by typing pltex.

To print the spectrum, type **pcon(18,1.4)** page. The number 18 is the level, the 1.4 is spacing. If you have questions, please feel free to ask our service instructors.

Experiment 18: 1D Carbon with Complete Fluorine Decoupling by Using Wave Function Generator (INOVA600 Only)

Sample to be used: 20% Perfluoro-2-methyl-2-pentene

Note: This is a special experiment that uses Wave Function Generator to construct a special decoupling sequence that is capable to decouple ^{19}F with big spectral width. If you are interested, please contact us.

Step 1. Login The Computer System

(See Experiment One)

Step 2. Change Sample

(See Experiment One)

Step 3. Lock And Shim The Magnet

(See Experiment One)

Step 4. Setup Parameters And Run Experiment

- 4.1 type *f19* to load standard fluorine parameters with CDCl_3 as solvent. Run a ^{19}F spectrum and save the file.
- 4.2 Find the value of *tof* by typing *dg* and record this value. *tof* is the center frequency of the observe transmitter.
- 4.5 Find the transmitter frequencies for each peaks as follows:
 - 4.5.1 Put the cursor on a peak and type *movetof*. Write down the new *tof* value after typing *dg*.
 - 4.5.2 Load the original spectrum again and find the *tof* value for another peak as in step 4.3.1.
 - 4.5.3 Repeat step 4.3.1 and 4.3.2 until all the frequency values for all peaks are recorded.
- 4.6 Calculate the *offset* value.
 - 4.4.1 Subtract the transmitter frequency value of each peak recorded in step 4.3 from the *tof* value of the spectrum recorded in step 4.2. Record these values.
Remember, always subtract the frequency value of a peak from the *tof* value, so that when the frequency of a peak is higher than the *tof* value, you get a positive *offset* value and when the frequency of a peak is lower than *tof*, you get a negative *offset* value.
- 4.5 Use Waveform generator to generate a shaped decoupling sequence:
 - 4.5.1 Load the F19 spectrum and type *wft*
 - 4.5.2 Click **Pbox** button on the menu bar
Click **Het-dec**
Click **Adiabatic** and then type 300 after J in Hz on the top of the screen for C-F coupling.
Click **Options**
Click **Offset** and input the *offset* value of the first (leftmost) peak which should be decoupled.
Click **Bandwidth** and input 4000----- the area will be decoupled.
Click **Return**.
Click **WURST**, three parameters will be displayed for the decoupling on the top.
 - 4.5.5. Click **Options** and repeat the remaining steps in the step 4.5.2. until all the *offset* value are input.
Click Close.
 - 4.5.6. Click **Name** and give a file name for the shaped pulse.

Click **Close**.

The computer will ask you to

Enter reference 90 degree pulse width (μs): (F19 90 degree pulse width)

Enter reference power level: (power level when you measure the F19 90 degree)

A shaped pulse will be displayed on the screen.

Write down the following parameters:

dres=x

dmf=xxxxxx

Remember you shaped pulse file name.

4.5.6 Load the standard C13 experiment parameters by typing *c13*

Input following parameters:

dres = x

dmf = xxxxxx

dn=F19

dm = 'nny'

dmm = 'ccp'

dseq = 'shaped pulse file name'

dof = the *tof* of F19 spectrum

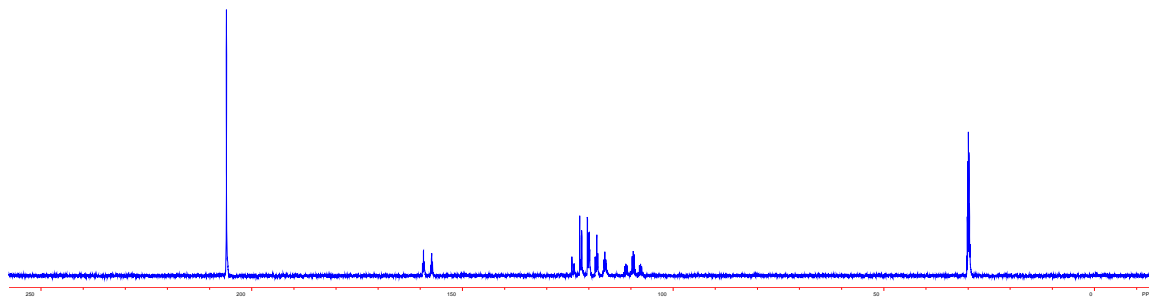
Type *ga* to acquire data.

Step 5. Data Processing

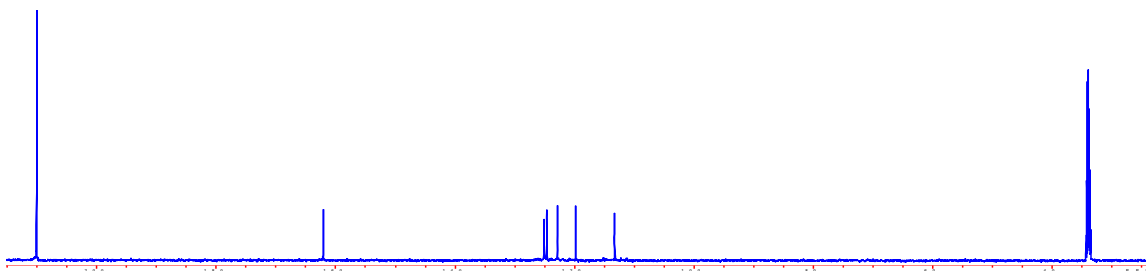
See steps in Experiment Two.

Step 6. Exit And Logout

See Experiment One.



^{13}C spectrum of $(\text{CF}_3)_2\text{CCFCF}_2\text{CF}_3$ in Acetone_D6 was acquired on INOVA600 without ^{19}F decoupling.



Fully ^{19}F decoupled ^{13}C spectrum of $(\text{CF}_3)_2\text{CCFCF}_2\text{CF}_3$ acquired on INOVA600.

Experiment 19: Variable Temperature Experiment (25 to 80 °C)

Sample to be used: 10% Strychnine in CDCl₃

Note: Double check your solvent boiling point or freezing point. If you need much higher temperature or much lower temperature experiments, please let us know. We could help you.

Step 1. Login The Computer System

See Experiment One

Step 2. Change Sample

See Experiment One

Step 3. Lock And Shim The Magnet

See Experiment One

Step 4. Setup Parameters And Run Experiment

4.1 type *h1*('solvent') to load standard proton parameters and run a normal 1D experiment.

4.3 For a single temperature:

type *temp* to open the temperature control box. Click on and drag the temperature bar to the desired temperature. Wait until the temperature reading on the remote display reaches the desired value, then for another 5 to 10 minutes to let the sample reach the equilibrium temperature. Shim the magnet again and type *ga* to start acquiring the data.

Step 5. Data Processing

See Experiment One.

Step 6. Terminated the variable temperature function and exit

6.1 Click and drag the temperature control bar to 25°C. Wait until the temperature drops to around 25°C, and click the temperature off button. Close the temperature control window. Exit and logout.

VNMRJ ¹H Operating Instructions

Note: All the commands you have learn from the VNMR (INOVA600, INOVA400) works on the VNMRJ.

Login

Login to the system by entering your group's user name and password.

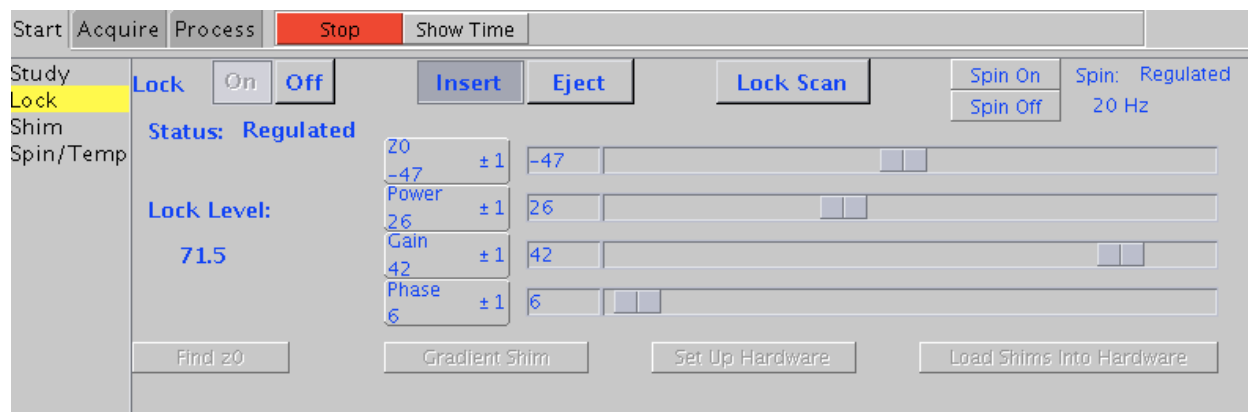
Starting vnmrj



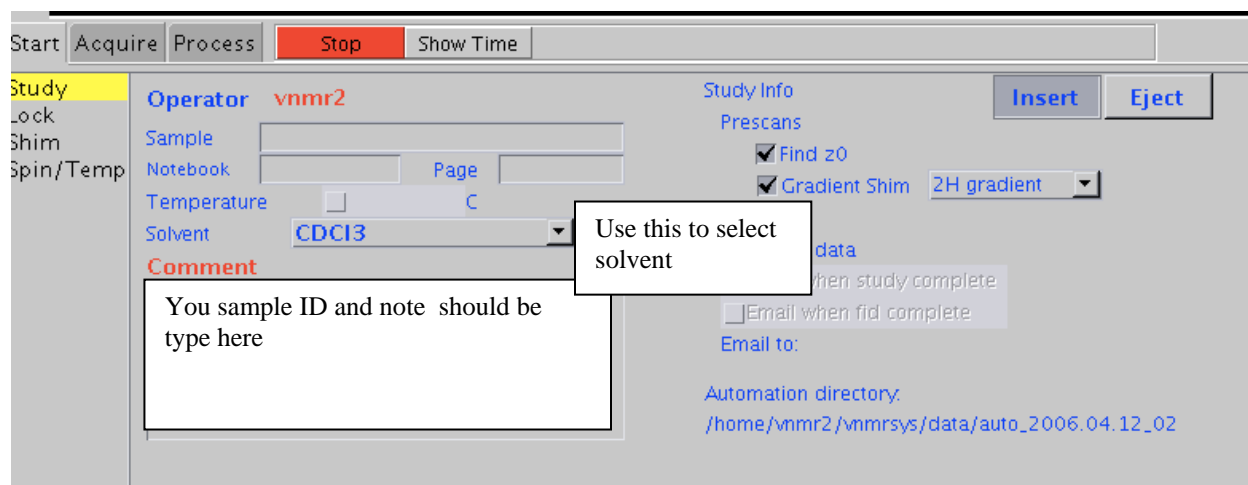
1. Start vnmrj by **single** clicking the vnmrj spectrum icon at the top of the screen.
2. Choose to run a ¹H experiment by dragging the proton icon on the left of the screen to the black area or type h1('solvent'). The default solvent is CDCl₃.

Inserting your sample

1. Click **spin off**, and Click **lock off** and then Click **eject** to remove the standard from the magnet.

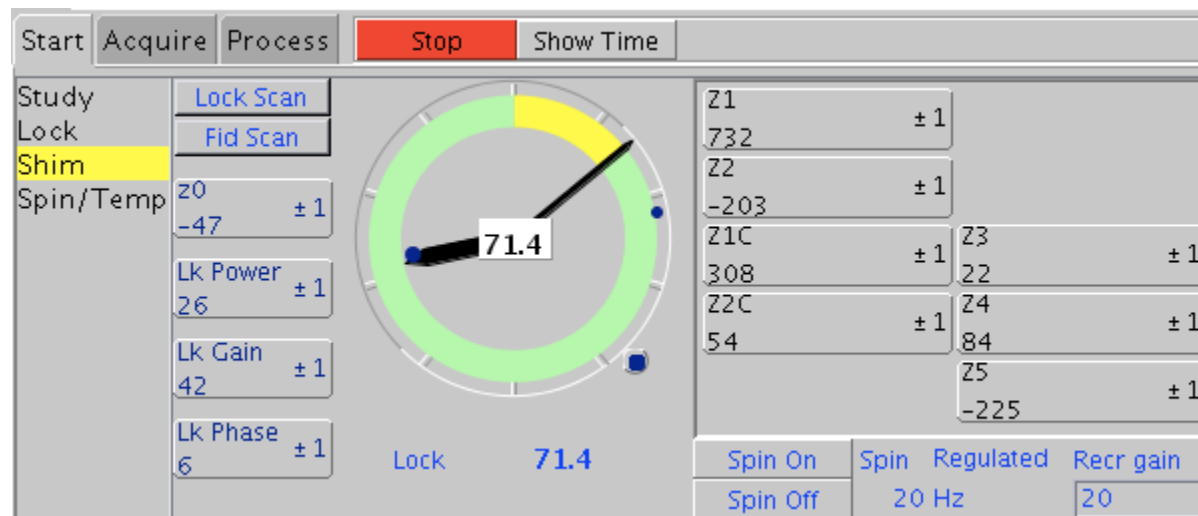


2. Replace the standard with your sample and click on **insert**. After the sample is proper inserted, then click **spin on**. The spin rate is displayed at the bottom.
3. If you wish to use a solvent other than CDCl₃, select which solvent you would like to use with the drag-down box on the following page. Click the **Study** tab.
4. If you would like to print a sample name/ID on your spectrum, insert this text into the comment box (The text will print later by the command **pap**).



Shimming and locking your sample

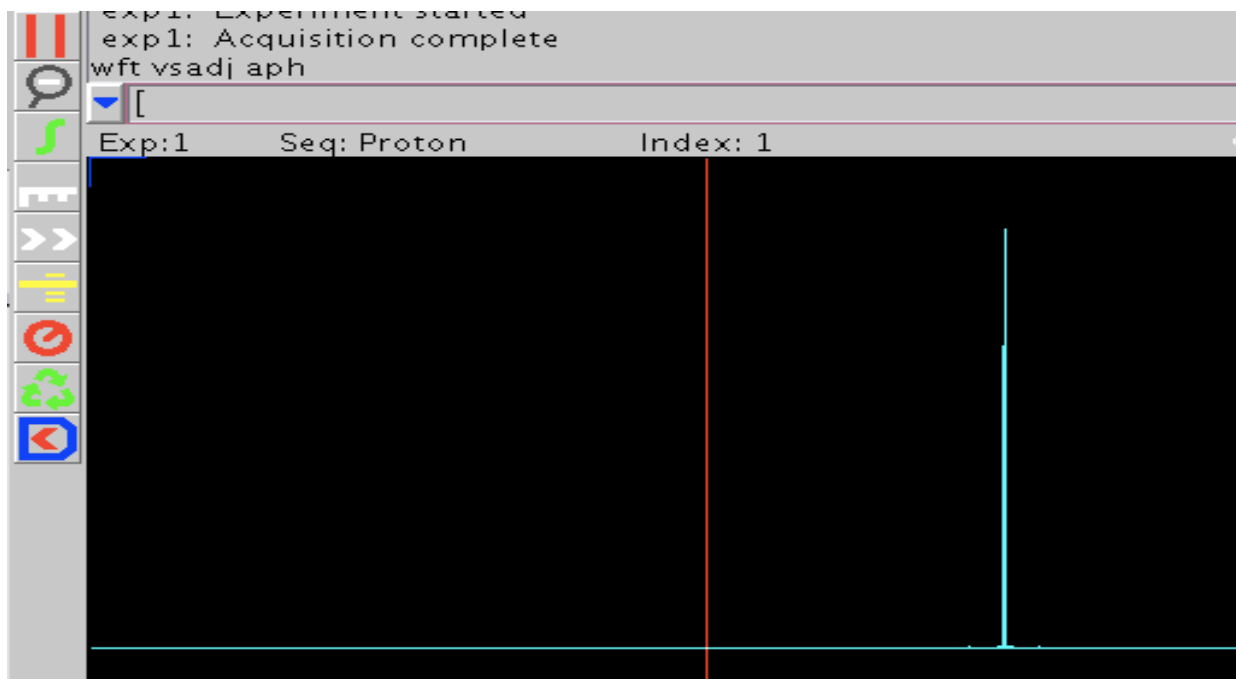
1. If you are using a solvent other than CDCl₃, click on the lock tab and change Z0, and then Power, Gain, and Phase as necessary to lock your sample. The values can be adjusted with the left and right mouse buttons as in the case with the other instruments, or by typing in the desired value and pressing enter.
2. Shim your sample by first clicking on the shim tab, then by adjusting the Z1 Z2 and Z3 values. Use command "loadshim" to reload standard shim file for the standard sample.



Acquiring your ¹H spectrum

1. Check the current acquisition parameters by clicking on the process tag, then by typing **dg** in the input box above the black box.
2. To change any parameters, click the acquire tag and make adjustments as necessary by typing in the input box. Use the format "**parameter = value**" to make changes.

- Alternatively, you may use the default parameters and simply change the number of scans by typing in the command input box (i.e., type **nt = 16** for 16 scans).
- Start the experiment by typing **ga**.



Processing your spectrum

- After acquisition is complete, the spectrum should be displayed on the screen.
- Apply the same commands as used on the other instruments to process the spectrum (i.e., type **wft vsadj aph** in the input box for Fourier Transform, vertical scaling of peaks, and autophasing, respectively).
- Displaying the scale:*** Note the set of processing icons to the left of the spectrum. Display the scale by clicking on the white ruler icon.
- Expanding the spectrum:*** To expand the spectrum, select the top icon containing 2 red lines. Place the cursors where desired, then expand the region by choosing the zoom in/out (magnifying glass) icon. Use this icon to expand the spectrum and also to return to normal size.
- Setting the solvent reference peak:*** As in the case with the other instruments, place the red cursor on your solvent peak, then type **rl(x.xxp)** in the input box to place the cursor directly on the peak and set the reference value (i.e., **rl(7.27p)** for CDCl₃).
- Integration:*** Click on the green integral icon, then take note of the two additional integration icons that appear just below it. Click the middle integration icon and use the mouse to cut the line, then return to the spectrum by typing **ds** in the input box. If necessary, you can also click on the top integral button or type **cz** to display the full integral.
- Setting a peak integral reference value:*** To set a specific peak integration value, click on the process tab, then the cursors/integration sub tab. Place the cursor on the desired

- peak and type in the desired number of protons in the *normalization value* box. Save changes by clicking on the *set integral value* icon.
8. **Set a precise spectrum width:** To set a specific numerical range for your spectrum, use the same commands as used previously on other instruments (i.e., typing **cr = 9.5p delta = 10p** then clicking the expand icon will set the window from -0.5 to 9.5 ppm).
 9. **Setting the peak threshold:** To choose the level of peaks for peak picking, press the icon labeled by the yellow threshold line and adjust the line accordingly.
 10. **Plotting and printing the spectrum** To plot and print, type any combination of the following commands into the input box. Note that these are the same commands as the ones used for other instruments, but are listed here as a reminder.

pl : print spectrum

pir: print integrals

pscale: print scale

pltext: print text label (from the comment box)

pap: print acquisition parameters

pll: print peak locations (ppm and Hertz) and peak height

ppf: print peak frequencies above each peak

page: eject page from the printer

Saving the data

1. If you do not yet have a directory in your group's folder, make a new directory by typing the command **mkdir('directory_name')**. Alternately, you can open your group's folder (top left of the desktop) and create a new directory by selecting *File Create folder*. Command "pwd" to check the current directory.
2. To save a file in an existing directory, first choose the directory by typing **cd('your_directory')**. Next, save the file by typing **svf('file_name')**.
3. To retrieve your data later, find your file in your group's folder on the desktop and drag it to the black processing window. Process as described previously.

Finishing the experiment

1. Eject your sample and replace with the standard sample.
2. If you used a solvent other than CDCl₃, adjust the lock parameters back to the required ones listed under the monitor.
3. Click on the *loadshim* icon at the top of the page, or type "loadshim" to reload the standard shim file.
4. Manually shim the sample to reach the required lock level.
5. Exit the system by choosing *File Exit vnmrj* or by typing **exit** into the input box.
6. Logout by choosing *Actions logout*, then click *OK*.

VNMRJ ¹³C Operating Instructions

Follow the VNMRJ ¹H instructions to login to vnmrj and insert, shim, and lock your sample. Remember all the commands on the inova400 could be used on the VNMRJ.

Acquiring your ¹³C spectrum

1. Choose to run a ¹³C experiment by dragging the carbon icon on the left of the screen to the black area or type **c13**

2. Check the current acquisition parameters by clicking on the process tag, then by typing **dg** in the input box above the black box.
3. To change any parameters, click the acquire tag and make adjustments as necessary by typing in the input box. Use the format “**parameter = value**” to make changes.
4. Alternatively, you may use the default parameters and simply change the number of scans by typing in the command input box (i.e., type **nt = 16** for 16 scans).
5. After typing in the number of scans, type **time** to find out how long the experiment will take. If you run an excess number of scans and would like to stop early, type **aa** to abort the experiment.
6. Start the experiment by typing **ga**.

Processing your spectrum

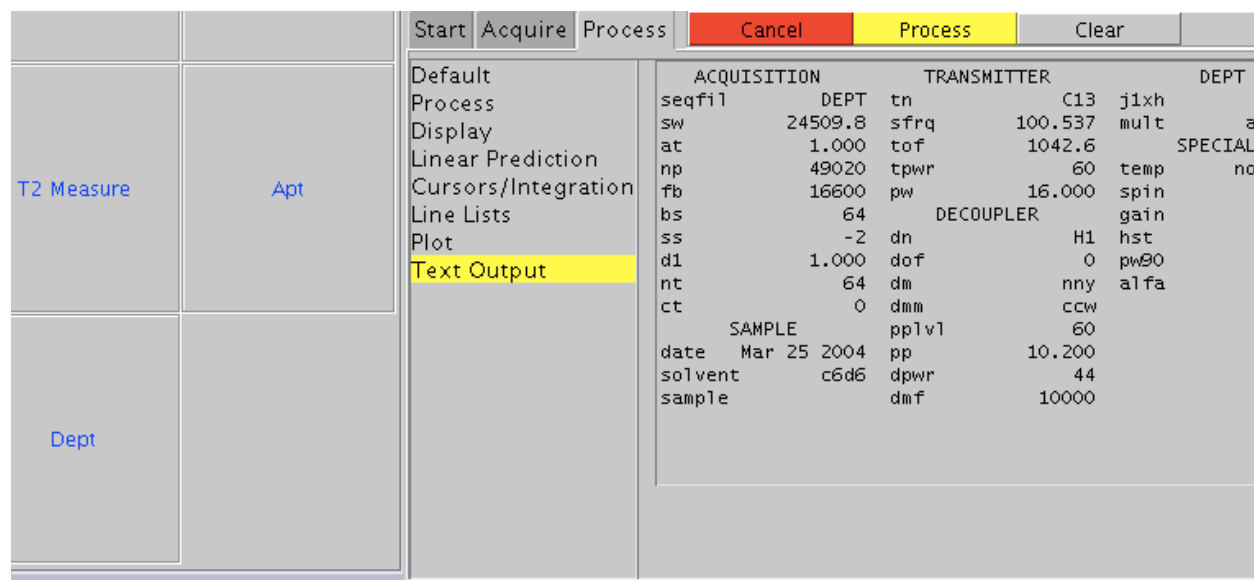
1. Apply the same commands as used on the other instruments to process the spectrum (i.e., type **wft aph** in the input box for Fourier Transform and autophasing, respectively).
2. **Displaying the scale:** As in the case for a ^1H experiment, note the set of processing icons to the left of the spectrum. Display the scale by clicking on the white ruler icon.
3. **Expanding the spectrum:** To expand the spectrum, select the top icon containing 2 red lines. Place the cursors where desired, then expand the region by choosing the zoom in/out (magnifying glass) icon. Use this icon to expand the spectrum and also to return to normal size.
4. **Setting the solvent reference peak:** As in the case with the other instruments, place the red cursor on your solvent peak, then type **rl(xx.xxp)** in the input box to place the cursor directly on the peak and set the reference value (i.e., **rl(77.23p)** for CDCl_3).

*Follow the VNMRJ ^1H instructions to plot and print the spectrum, save the data, and replace your sample with the standard sample. **Before exiting the system, make sure to drag the proton icon to the black window then type su or type h1 to turn off the decoupler.***

VNMRJ APT Operating Instructions

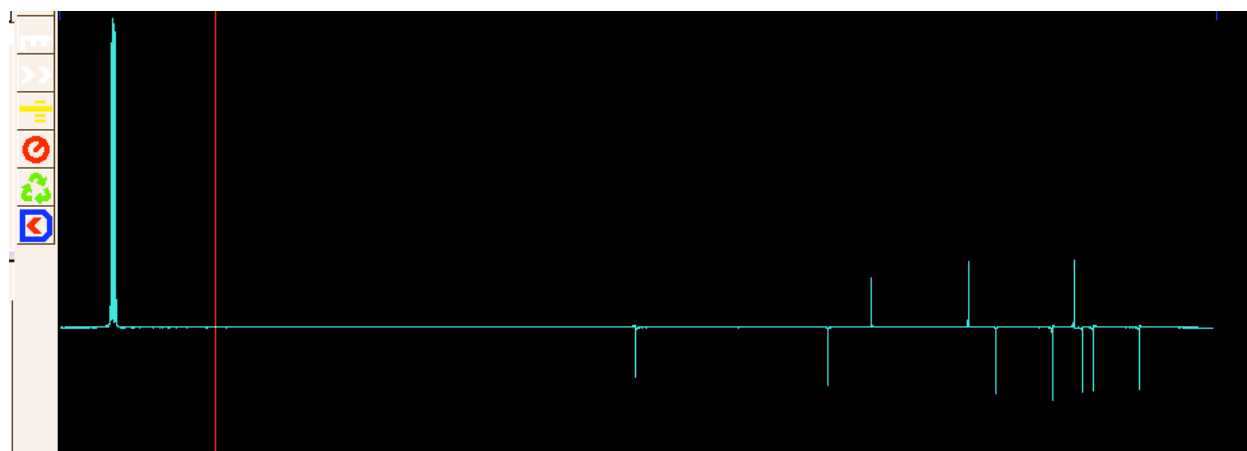
Preparing for the APT experiment

1. Use the VNMR 1H and 13C instructions to shim and lock your sample. Change solvent settings as necessary. Drag the carbon icon to the black window and acquire a carbon spectrum using standard parameters.
2. Type **wft aph** to process the spectrum.
3. Use the toolbar to place the red cursors just to the left and right of the carbon peaks. Type **movesw** to select this as the new range for the experiment. Remember all carbons, include solvent carbons, will show up on the APT spectrum.
4. Click on the Process and Text Output tabs. Type **dg** to load the updated parameters. Record the values for sw and tof for use later in the experiment.



Acquiring the APT spectrum

1. Drag the **APT** icon from the left of the screen to the black window (this will return the experiment to default parameters).
2. Using the values recorded previously in step 4, enter the new parameters for **sw** and **tof** by typing **sw = x** and **tof = x**. Type **dg** and verify that the parameters are correct.
3. Enter the number of scans by typing **nt = x**, then type **ga** to start the experiment.
4. After the experiment is finished, type **aptaph** to automatically phase the peaks. If the phasing is still off, you can adjust manually by choosing the red circle icon on the toolbar and then adjusting with the left and right mouse buttons.
5. Set the solvent reference peak by typing **rl(x.xxp)**.



APT spectrum of Menthol in CDCl₃. UP: CH₂ and Cs and Down CH and CH₃s.

6. Print the spectrum using standard processing commands.

Finishing the Experiment

1. Remove your sample and replace with the standard sample, then turn on the spin and shim to the required lock level.
2. Drag the proton icon to the black window or type **h1** to load standard parameters.
3. Exit vnmrj and log out.

Additional information:

These instructions are very generalized. If you cannot obtain an acceptable APT spectrum, please see Dr. Wu for assistance, as additional parameters may need to be adjusted or the probe needs to be re-tuned for your sample.

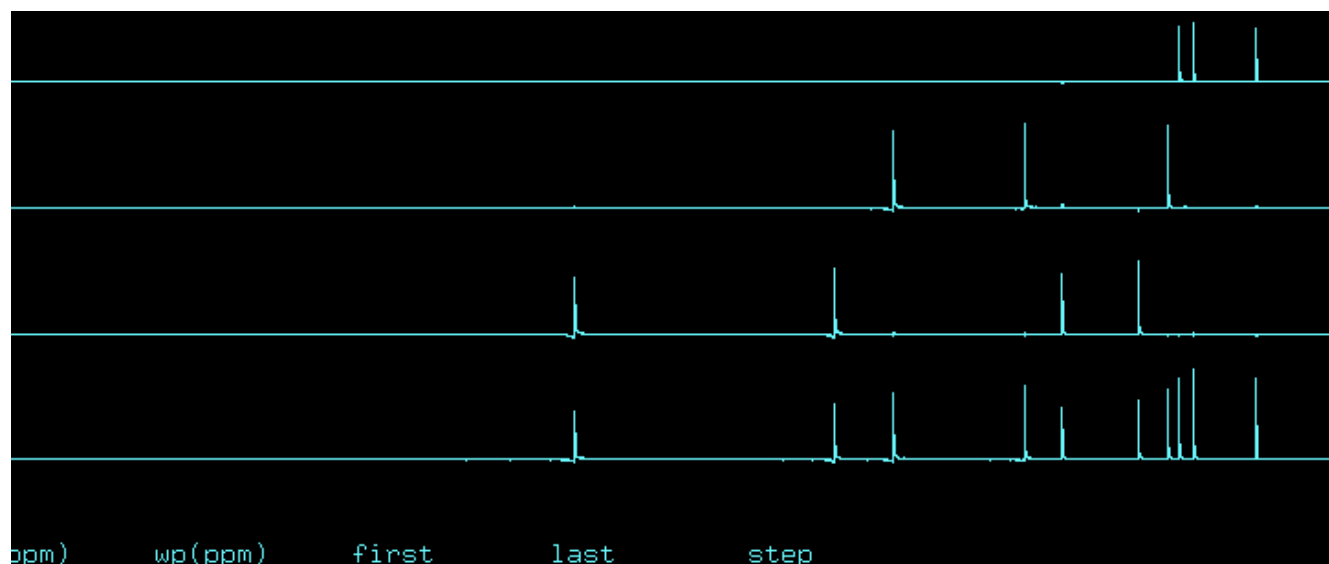
VNMRJ DEPT Operating Instructions

Preparing for the DEPT experiment

1. Use the VNMR 1H and 13C instructions to shim and lock your sample.
2. Change solvent settings as necessary. Drag the *carbon* icon to the black window and acquire a carbon spectrum using standard parameters.
3. Type **wft aph** to process the spectrum. Use the toolbar to place the red cursors just to the left and right of the carbon peaks. Type **movesw** to choose this as your range for the experiment.
4. Click on the Process and Text Output tabs. Type **dg** to load the updated parameters. Record the values for sw and tof for use later in the experiment.

Acquiring the DEPT spectrum

1. Drag the *DEPT* icon from the left of the screen to the black window (this will return the experiment to default parameters).
2. Using the values recorded previously in step 4, enter the new parameters for sw and tof by typing **sw = x** and **tof = x**. Type **dg** to update the parameters.
3. Enter the number of scans by typing **nt = x**, then type **ga** to start the experiment.
4. After the experiment is finished, type **autodept** to automatically plot and print the DEPT spectrum.



Finishing the Experiment

1. Remove your sample and replace with the standard sample, then turn on the spin and shim to the required lock level.
2. Drag the proton icon to the black window to load standard parameters.
3. Exit vnmrj and log out.

Additional information:

These instructions are very generalized. If you cannot obtain an acceptable DEPT spectrum, please see Dr. Wu for assistance, as additional parameters may need to be adjusted.

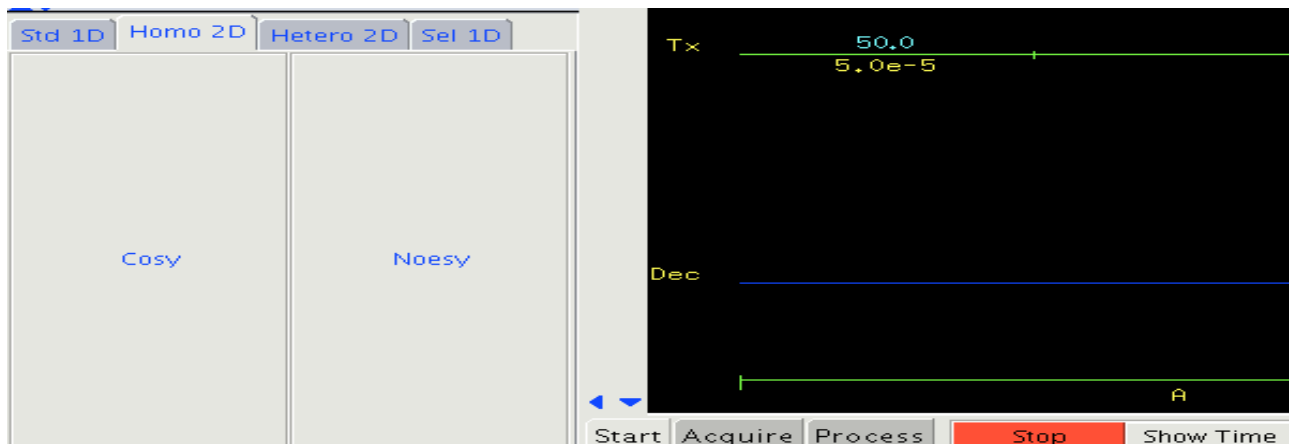
VNMRJ COSY Operating Instructions

Preparing for the COSY experiment

1. Use the VNMR ^1H instructions to shim and lock your sample. Change solvent settings as necessary. Drag the proton icon to the black window and acquire the proton spectrum using standard parameters.
2. Process the ^1H spectrum as listed in the instructions. Set the solvent reference peak, and save the file for later reference.
3. Type **gain?** in the command input box to determine the value to use for gain in the COSY experiment. For COSY or 2D experiments, you have set the gain, rather leave it as "autogain".
4. Use the ^1H spectrum to determine the spectral width for the COSY. Do this by placing the red cursor on both sides of the spectrum and typing **movesw**.

Acquiring the COSY spectrum

1. Click on the Homo 2D tab on the left of the screen.
2. Drag the COSY icon to the black window.



3. Type **dg** to view the current parameters. The parameters will be displayed after choosing the process tab (horizontal menu) and text output tab (vertical menu).
4. Change the gain value to the number used for the ^1H experiment in the previous section. This can be done by typing **gain = x** in the command input box.
5. Change the number of scans by typing **nt = x** (where $x = 16, 32, \text{etc.}$). Note that the minimum is 4 scans, and a larger number of scans will lead to a better spectrum.
6. Change the number of FID's by typing **ni = x**. Typically the desired values for x are 128, 256, 512, etc. It is best to start with at least $ni = 256$, and a larger value is better.
7. Check the parameters again as explained in step 3. $sw=sw1$, $np=1024$ or 2048 , $fn=2048$, $fn1=2048$, Type **time** to see the length of the experiment. Adjust nt and ni to fit your allotted time.

Start	Acquire	Process	Cancel	Process	Clear	
Default	ACQUISITION		satpwr	-13	GRADIENTS	PROCESSING
Weighting	seqfil	COSY	TRANSMITTER	gzlv11	1048	sb -0.080
Display	sw	6410.3	tn	H1	gt1	0.001000 sbs not used
More 2D	at	0.160	sfrq	399.790	gstab	0.000500 fn 2048
Integration	np	2048	tof	399.4	hsglv1	1048 2D PROCESSING
Cursors/Line Lists	ss	16	tpwr	60	hsgt	0.005000 sb1 -0.020
Plot	d1	1.301	pw	11.000	FLAGS	sbs1 not used
Text Output	nt	4	tpwr_cf	1.018	hs	nn proc1 1p
	ct	0	DECOUPLER	sspul	n	fn1 2048
	2D ACQUISITION		dn	C13	SAMPLE	
	sw1	6410.3	dm	nnn	date	Jan 15 2004
	ni	128	SPECIAL	solvent	cdc13	
	PRESATURATION		temp	25.0	sample	
	satmode	nnn	spin	0		
	PRESATURATION		gain	38		
	satmode	nnn				
	satdly	0				
	satfrq	499.8				

8. Turn off the spin (under the start and lock tabs), and type **ga** to begin the experiment.

Processing the spectrum

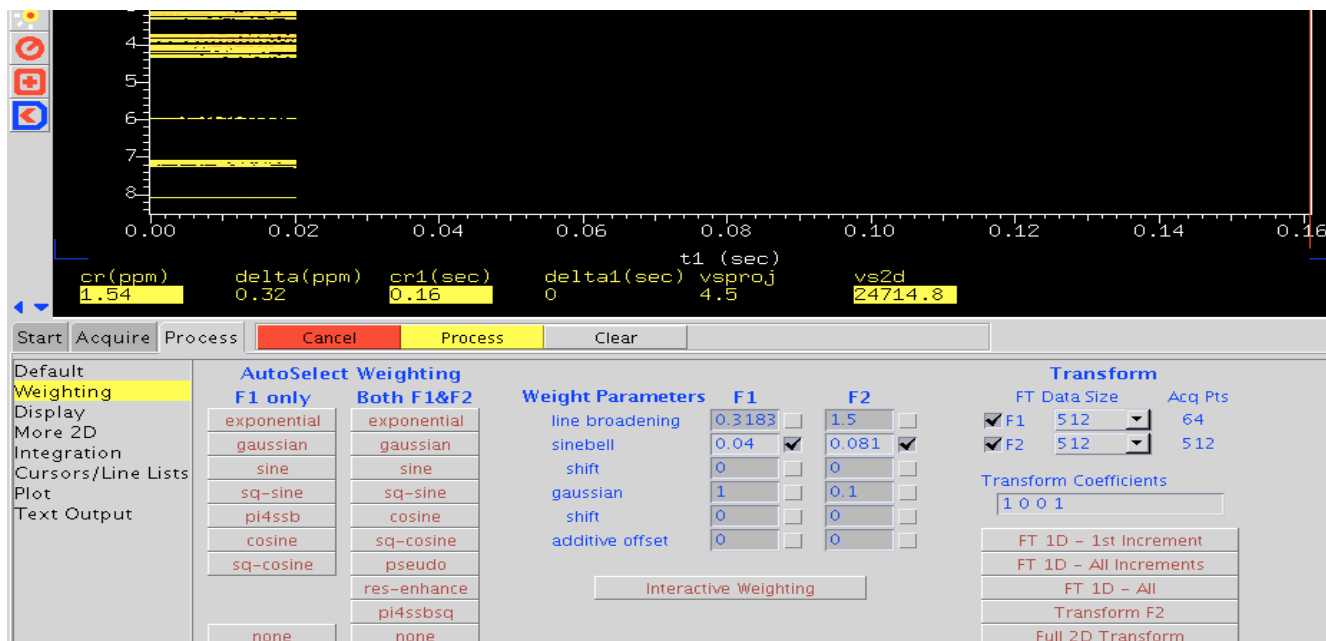
1. If you would like to use the default processing/plotting method, you can print now by typing **pcon page** in the command input box. If you would like to manually process the spectrum, continue below.

2. Peak shape adjustment (F1 and F2):

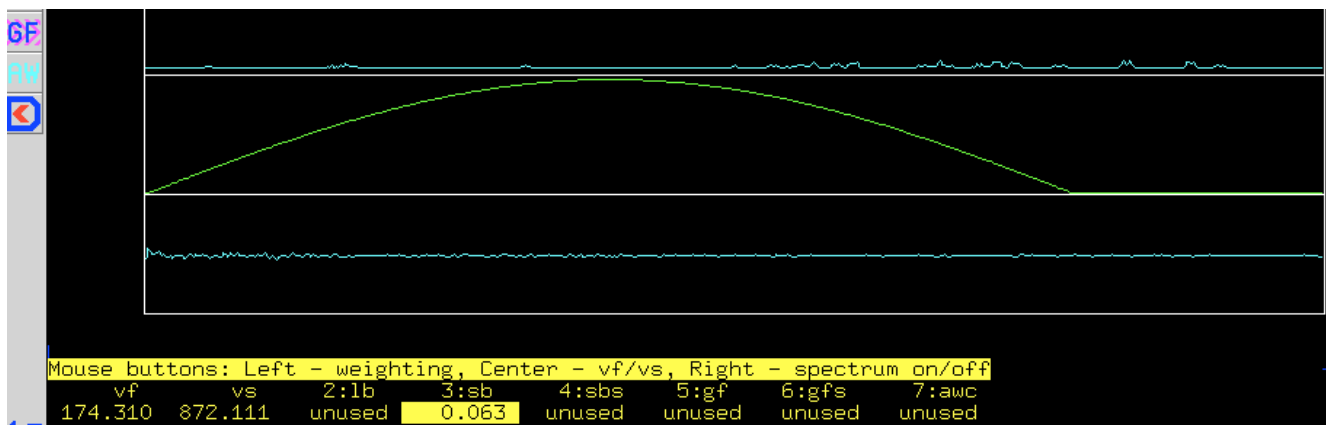
After selecting the process tab on the horizontal menu, choose the weighting tab on the vertical menu. To adjust F2, first click on *FT 1D - 1st increment*. If the full spectrum is not shown, type **full** followed by **f** to show the whole spectrum.

The screenshot shows the NMR software interface. At the top, there is a horizontal menu with buttons: Start, Acquire, Process, Cancel, Process, Clear. Below this is a vertical menu with options: Default, Weighting, Display, More 2D, Integration, Cursors/Line Lists, Plot, Text Output. The main window displays a 1D spectrum plot with a red vertical line indicating a cursor. Below the plot, there are several parameters: vp (0), cr (1.54), vs (872.1), and delta. The bottom panel contains the 'AutoSelect Weighting' section with buttons for 'F1 only' and 'Both F1&F2'. The 'Weight Parameters' section includes 'line broadening' (0.3183), 'sinebell' (0.04), 'shift' (0), 'gaussian' (1), 'shift' (0), and 'additive offset' (0). The 'Transform' section shows 'FT Data Size' (512) and 'Acq Pts' (64). The 'Transform Coefficients' section shows '1 0 0 1'. The 'FT 1D - 1st Increment' button is highlighted.

There are two options for adjusting the values for F2. You can simply input new values for F2 by entering numbers in the boxes under the weight parameters heading and F2 subheading, and then clicking the *Transform F2* icon.



Alternately, you can manually adjust F2 by clicking on *interactive weighting* and adjusting the Gaussian curve with the left mouse button until the desired peak shape is obtained. When adjustment is finished, click the *transform F2* icon.



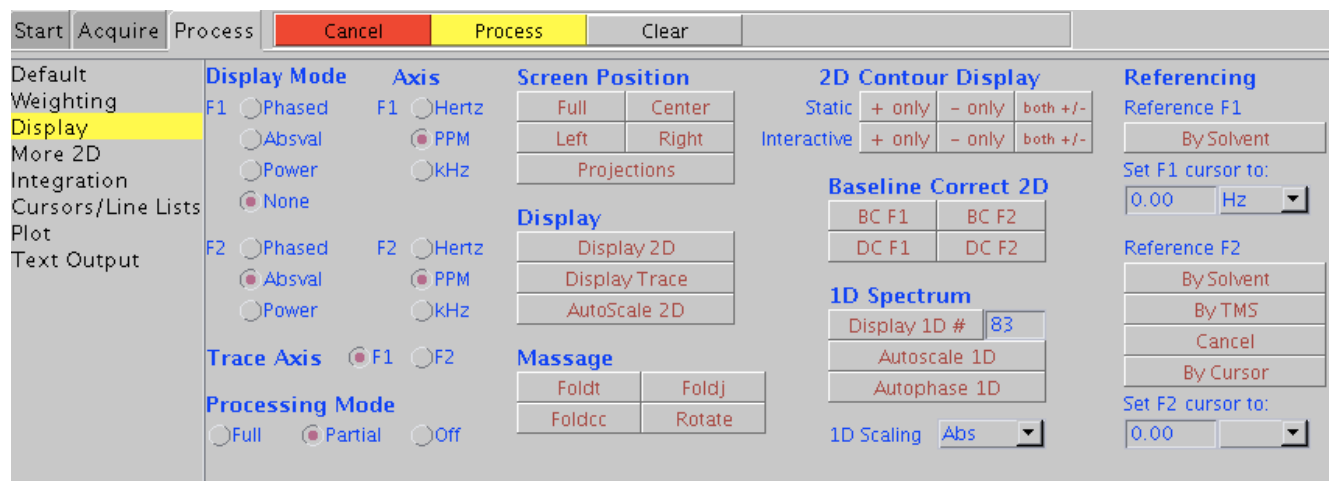
To adjust F1, choose any single line of the spectrum using the red cursor lines, then click on *interactive weighting* and manually adjust the curve as described in the last step. When adjustment is finished, click the *full 2D transform* icon.

3. **Eliminating peak noise:** To remove excess unsymmetrical noise, type **foldt** in the command input box.

4. **Setting the solvent reference peak:** Note that this step is unnecessary if you have already set the reference peak in your 1H NMR experiment at the beginning of these instructions. However, if necessary, you may set this value by using the cursor and zoom

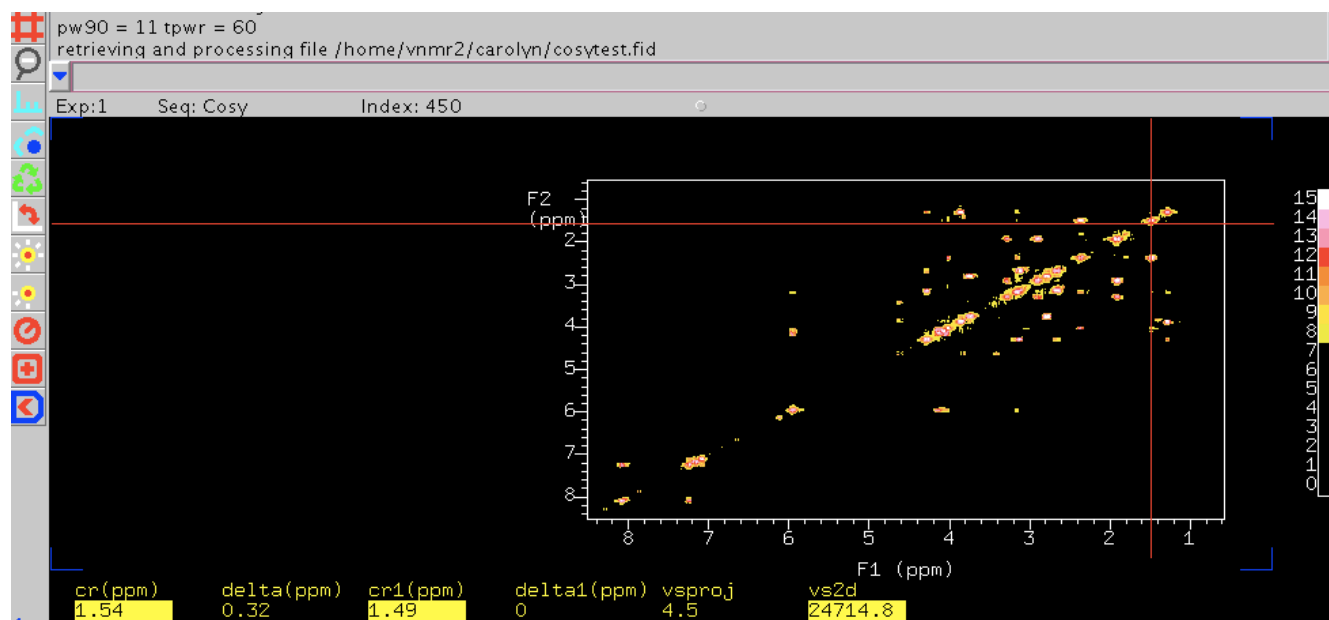
(magnifying glass) icons to expand the area containing the solvent peak. Place the cursor on the desired peak and type in the command **rl(x.xxp)** to set the reference value.

5. **Decreasing static noise:** Click on the display tab on the vertical menu. Check to make sure that “none” is selected under Display Mode, then look for the 2D Contour Display heading. Select the static *both +/-* icon to decrease static noise.



6. **Changing the screen position of the spectrum:** look for the Screen Position heading. You may choose from the *full*, *center*, *left*, and *right* icons, depending on how you would like to plot your spectrum. Typically it is best to choose the *center* option since it will allow for easier plotting of the peaks and spectrum later.

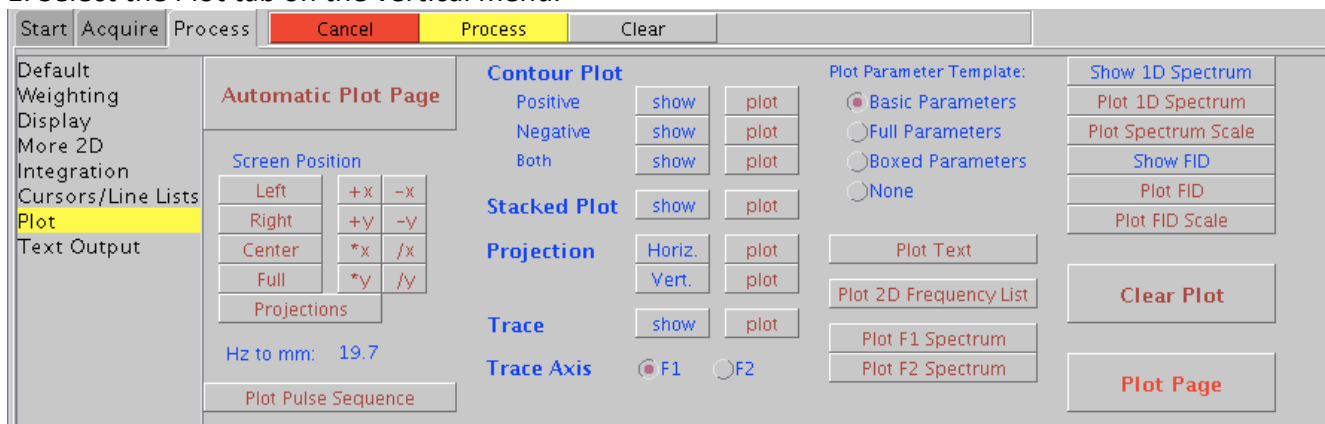
7. **Increasing/decreasing intensity of peaks:** Adjust intensity of peaks by using the yellow bulb icons on the toolbar.



8. Expanding regions of the spectrum: Choose the red cursor icon on the toolbar. Use the left and right mouse buttons to select the area to be expanded and click on the zoom icon to expand. Also use this icon to return to normal size.

Plotting and printing the COSY spectrum

1. Select the Plot tab on the vertical menu.



2. Look for the Contour Plot heading, then click on the *show* icon next to the *both* subheading. Click on the *plot* icon just to the right to mount the vertical and horizontal contour.

3. To add your proton peaks to the spectrum, look for the Projection heading, then click on *Horizontal* and *plot* (icon directly to the right) to add the horizontal peaks. Add the vertical peaks in the same manner, by clicking on *vertical* and then *plot*.

4. To print, click on the *plot page* icon.

Finishing the Experiment

1. Remove your sample and replace with the standard sample, then turn on the spin and shim to the required lock level.
2. Under the Standard 1D tab, drag the proton icon to the black window to load standard parameters.
3. Exit vnmrj and log out.

Appendix A: Download Your Data from Host Computers to a PC

NMR Center has an internal network that is not connected to outside network. To access the NMR data on all NMR host computers, you have to use a PC to connect the internal network and download the data. There is a PC available in the NMR lab. Bring your own USB, or portable hard disk.

Login if screen is locked: username: nmruser
 password: nmr4me or nmrforme

Double Click on “Shortcut to Smart FTP” to open the Smart FTP window.

Type the IP address of the host computer you want to download data from in ‘Address’ box.

IP addresses for each host computers:

inova400: 170.140.188.70
inova600: 170.140.188.67
mercury300: 170.140.188.72

Type your group username in ‘Login’ box.

Type the password of your group in ‘password’ box and press Enter.

You maybe need to wait a couple of minutes to establish the connection.

When you see the folders and files appear in the panels, the connection is established.

Find your folders and files and drag them to the desktop (or you may want to create a temporary folder) on this computer.

Copy the data to the media you like: USB flash drive (flash key), zip disk, floppy disk or burn your data on a CD.

Delete your data and folders you created from this computer.

Appendix B: When and how to use command *su acqproc*

su acqproc is a command to connect or disconnect the communication between Sun host computer and CPU board in the NMR console. There are several occasions users need to use it.

When: The communication is lost. The computer seems not to respond to any command you typed in and you are not able to open the 'acqi' window. A word '**inactive**' is usually shown after STATUS in the ACQUISITION STATUS window.

How: Open the Console window by double click on the Console icon on the up-right corner of the screen (Sometimes it is hiding behind ACQUISITION STATUS window). Type *su acqproc* and press **Return**. A message "Starting 'Expproc' will show up. At same time "Word '**inactive**' will change to '**idle**' in the ACQUISITION STATUS window. You should be able to operate the instrument again.

When: The Lock button is missing in the ACQUISITION window. It happens very often when you type h1, then immediately you clicked acqi. After you type h1, you should wait until "idle", then click "acqi".

How: Open the Console window, type *su acqproc* and press **Return** to disconnect the communication. Type *su acqproc* and press **Return** again to establish the communication.

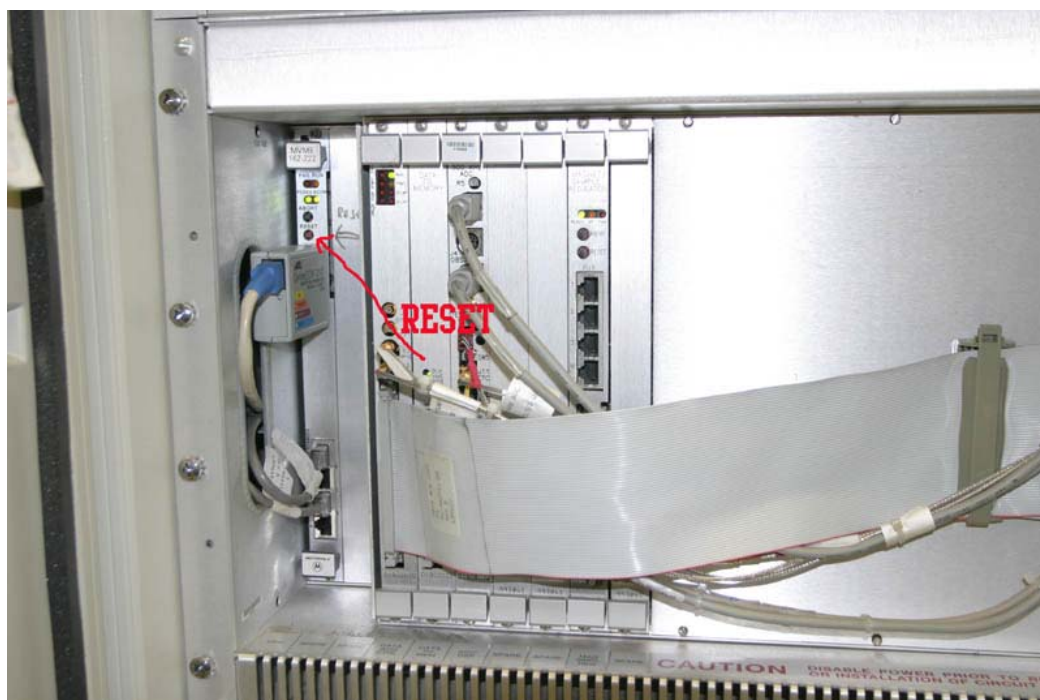
If above operation doesn't work, you should call Dr. Wu for help. Sometime you have to reset the console when he asks you to do so. The following pictures show the reset button on different console.



UNITY600 Plus Console RESET button position.



Mercury 300 RESET Button position.



INOVA400 and INOVA600 RESET Button position

Appendix C: Most Useful Commands and Parameters for VNMR and VNMRJ

aa—abort acquisition
 ai—absolute intensity mode
 alock='n' auto lock setting
 alfa---Delay time before acquisition
 aph—automatic phase correction
 at—acquisition time (sec)
 axis—scale units: axis='h' or axis='p'
 bc—baseline correction
 bs—block size
 cd—change directory: cd('/data/nmryao')
 cexp—create experiment: cexp(7)
 cr—cursor value
 ct—completed transients (scans)
 cz—clear zeros (integral)
 d1—first delay (relaxation delay in seconds)
 d2—second delay in seconds
 da—display array (parameters)
 dc—drift correction
 dcon—display contours interactively
 delta—cursor difference
 df—display fid
 dfrq—decoupler frequency
 dg—display group of parameters
 dli—display integral list
 dll—display line list
 dlni—display normalized integral list
 dm—decoupler mode: dm='nny'
 dn—decoupler nucleus

 dof—decoupler offset
 dpcon—display plotted contours:
 dpcon(10,1.2)
 dpf—display peak frequencies
 dpir—display integral regions
 dpirn—display normalized integral regions
 dps—display pulse sequence
 dpwr—decoupler power
 dres—digital resolution
 ds—display spectrum
 dscale—display scale descale(-10)
 dssa—display stacked spectra
 dssh—display stacked spectra horizontally
 dtext---display text on the screen
 f—display full spectrum

 foldt—symmetrize 2D data (cosy)
 fn—Fourier number (zerofill)
 fn1—Fourier number in 2nd dimension
 full—display spectrum in full window
 ga—acquire and process
 gain—receiver gain: gain='n' for autogain
 go—acquire spectrum
 ho—horizontal offset
 ins—integral normalization scale
 io—integral offset
 isadj—adjust integral scaling
 jexp—join experiment: jexp2
 lb—line broadening
 lp—left phase
 movesw—move sweepwidth
 movetof—move tof
 mp—move parameters: mp(1,2)
 nl—nearest line
 nm—normalized mode
 np—number of points
 nt—number of transients (scans)
 pad—preacquisition delay
 page—send to plotter
 pap—plot all parameters
 pcon—plot contours: pcon(10,1.2)
 phase(180)—phase spectrum 180°
 pir—plot integral regions
 pirn—plot normalized integral regions
 pl—plot spectrum
 pll—print line list
 plot—plot everything
 plww—print spectra whitewashed
 ppa—plot partial parameters
 ppf—plot peak frequencies
 process—transform, phase, integrate
 spectrum
 spsub---Subtract current spectra from exp5.
 pscale—plot scale
 pw—pulse width
 pwd—present working directory
 ra—resume acquisition (stopped by sa)
 rl—reference line: rl(7.27p)
 rof2---Receiver gating time
 rp—right phase

rt—retrieve FID
rtp—retrieve parameters
rts—retrieve shims
sa—stop acquisition
sc—start of chart (in mm)
sc2—start of chart in 2nd dimension (in mm)
sd—set decoupler frequency
sda—add another decoupler value
sfrq—spectrometer frequency
sp—start of chart (in ppm)
sp1—start of chart in 2nd dimension (in ppm)
ss—steady state scans or dummy scans
su—setup hardware parameters
svf—save FID
svs—save shims only
svp—save parameters only
sw—spectral width or sweep width
temp—set temperature: temp='n'
tn—transmitter nucleus
tof—transmitter offset (middle of sweepwidth)
tpwr—transmitter power
text('your_ID\\date')
unlock—unlock a locked experiment:
unlock(2)
vo—vertical offset
vp—vertical position
vs—vertical scale
vsadj—vertical scale adjust
wc—width of chart (in mm)
wc2—width of chart in 2nd dimension (in mm)
wshim='n' start with auto shim
wp—width of chart (in ppm)
wp1—width of chart in 2nd dimension (in ppm)
wft—weighted Fourier transform
wft2d—transform 2D absolute value data
wft2da—transform 2D phase-sensitive data
wti—interactive weighting
z—cut integral reset

Appendix D: Processing NMR data with NUTS on a PC

The data from Varian NMR instrument consist four individual files: fid, log propar and text. The fid is the spectrum data. The log file contains the date of the spectrum acquired, The text file contain the note that you input by the command text('your_ID\\date'). And the propar file contains all the acquisition parameters, including the shim data.

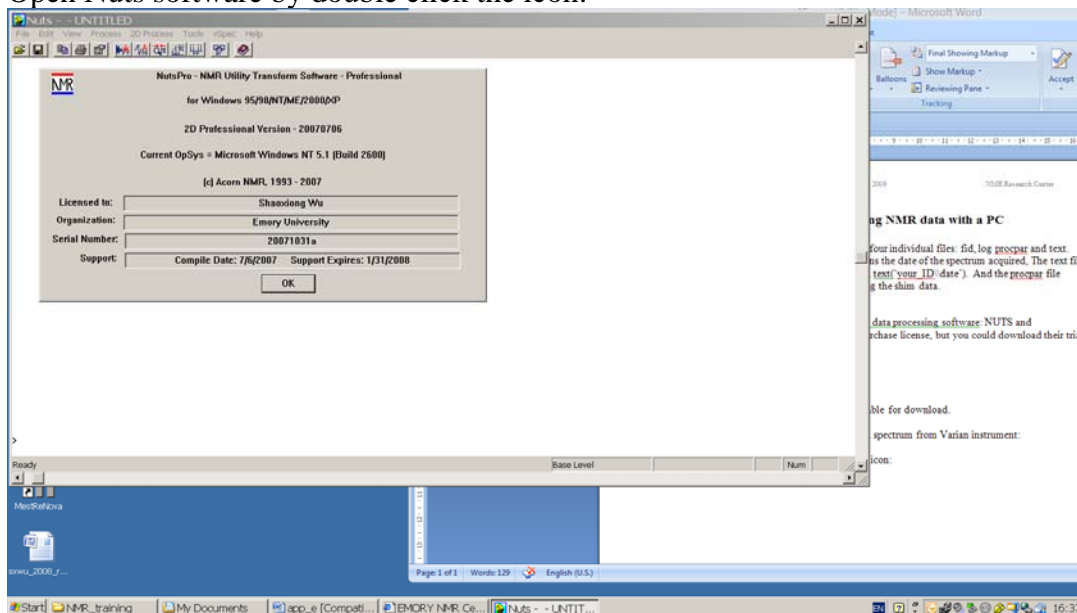
In our NMR center, we have two off-line NMR data processing software: NUTS and MestReNova. For both software you have to purchase license, but you could download their trial version.

<http://www.acornnmr.com/>
<http://www.mestrec.com/>

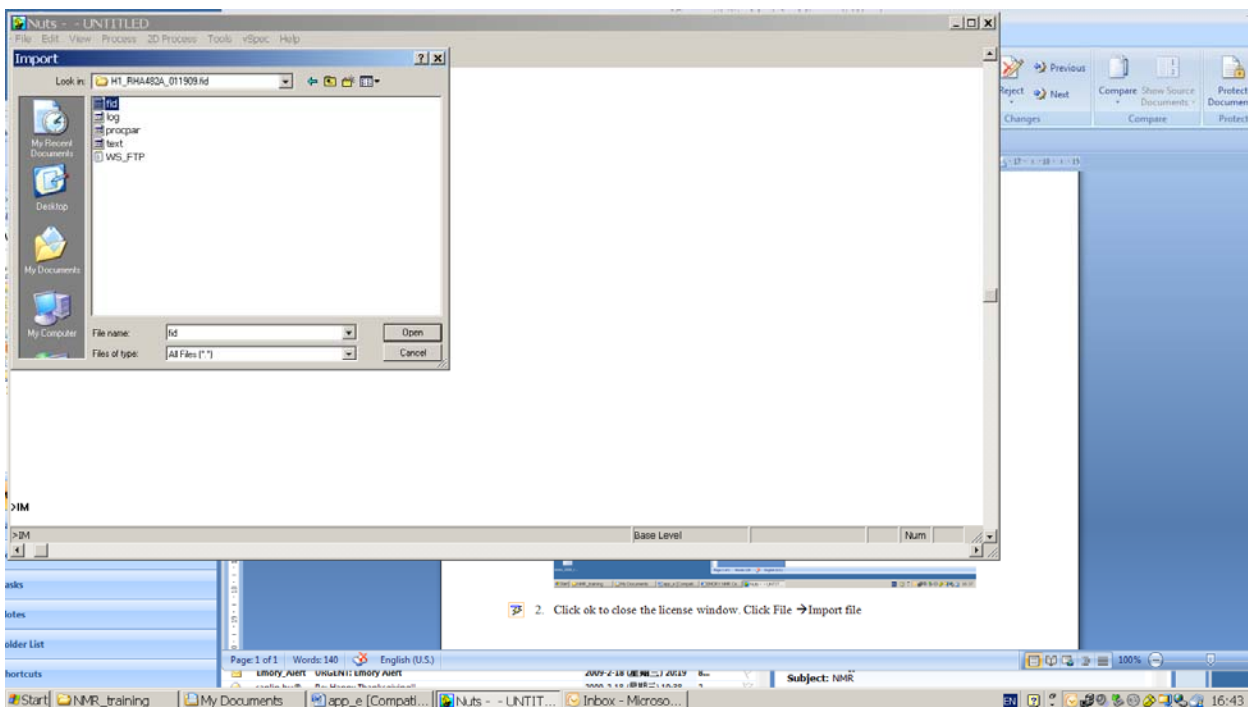
Also there are detailed operation manuals available for download.

Following is an example to use NUTs process a spectrum from Varian instrument:

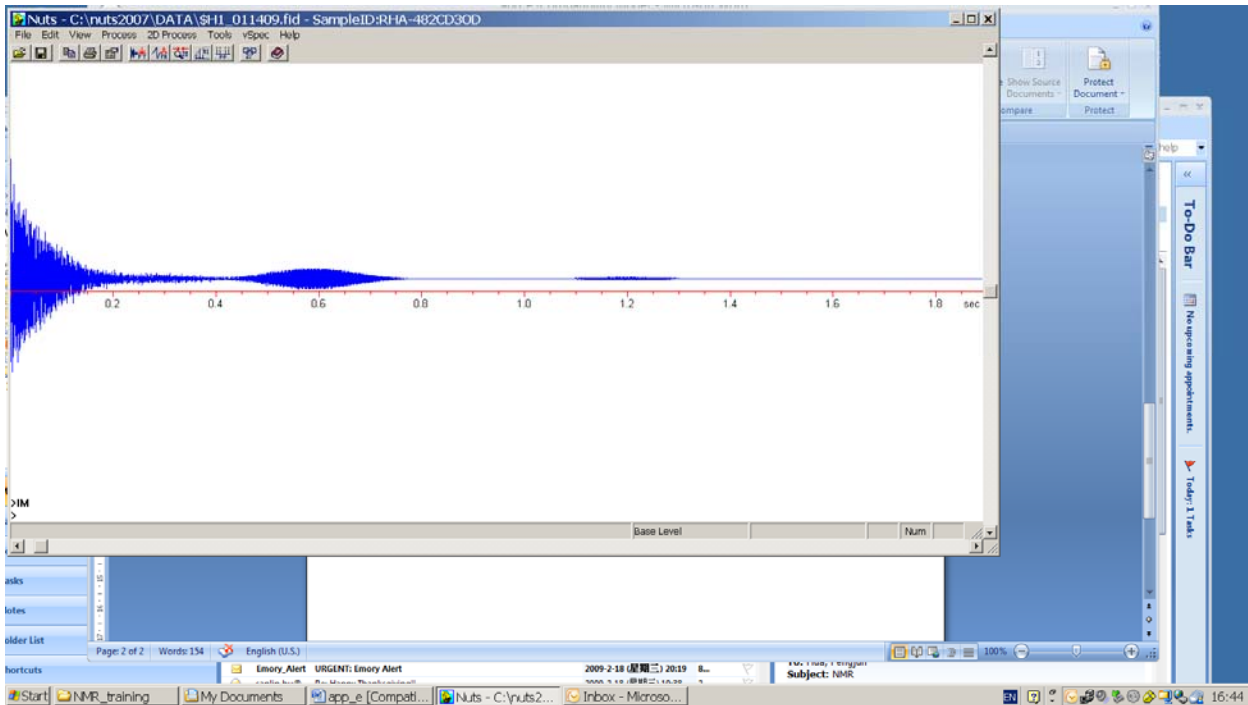
1. Open Nuts software by double click the icon:



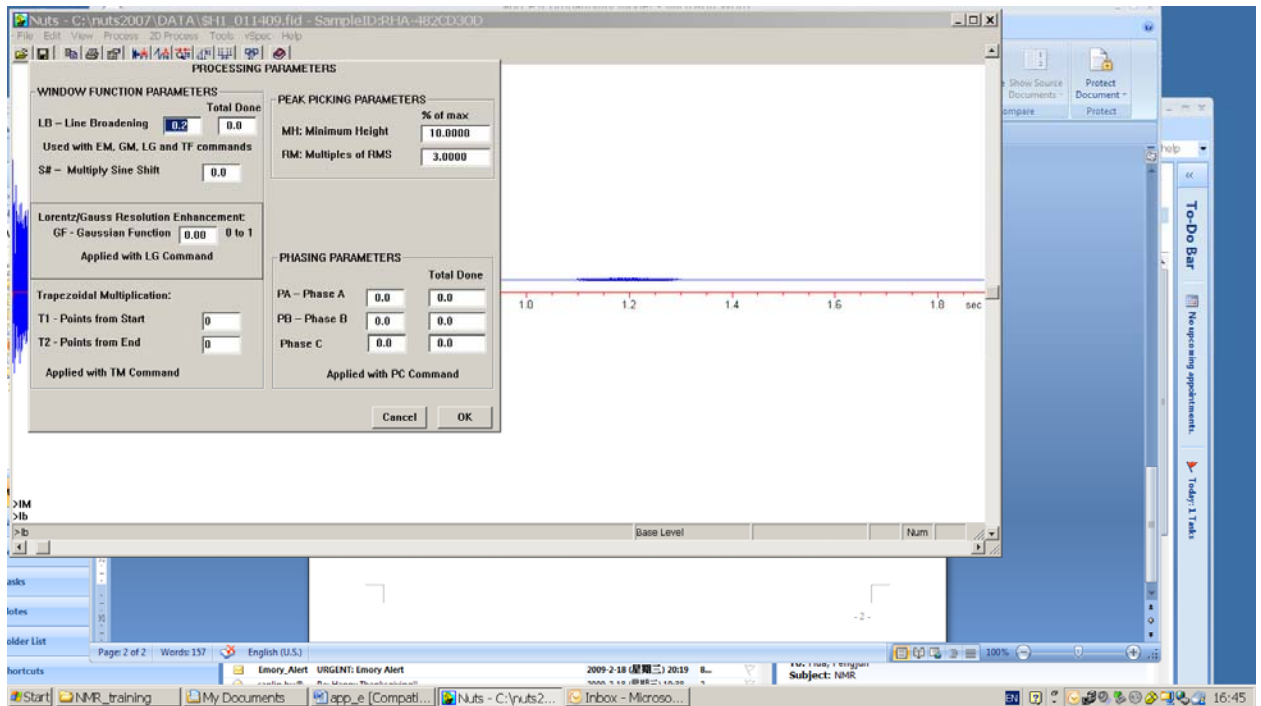
2. Click ok to close the license window. Click File → Import file → select the file and open fid and click ok.



After the fid loaded:

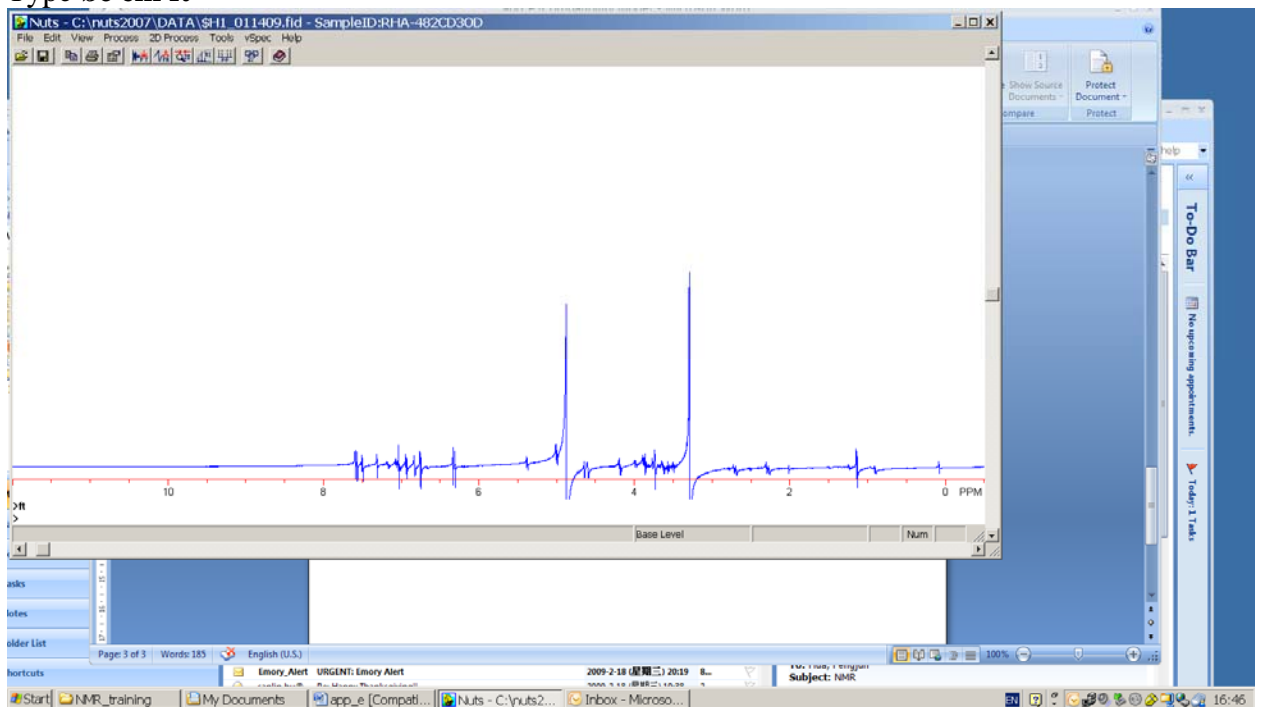


You type lb:

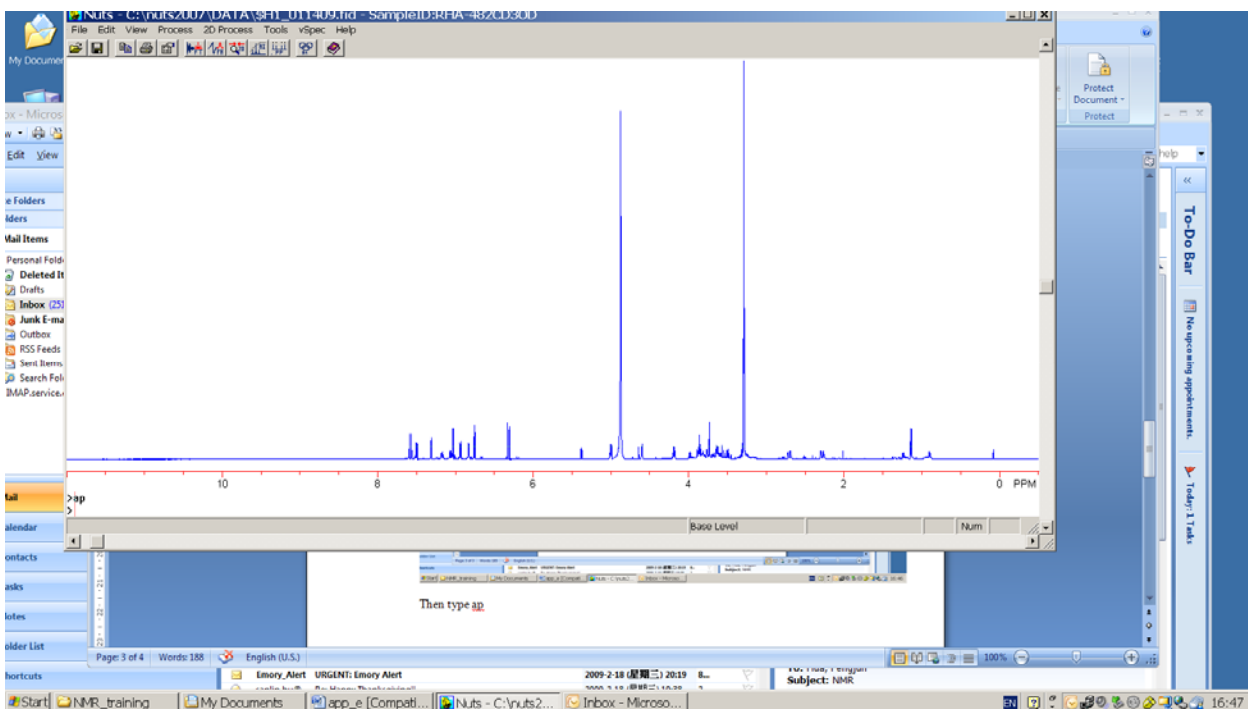


If it is proton spectrum, set it to 0.2 hz, if it is a carbon spectrum set it to 2 hz. Then click ok

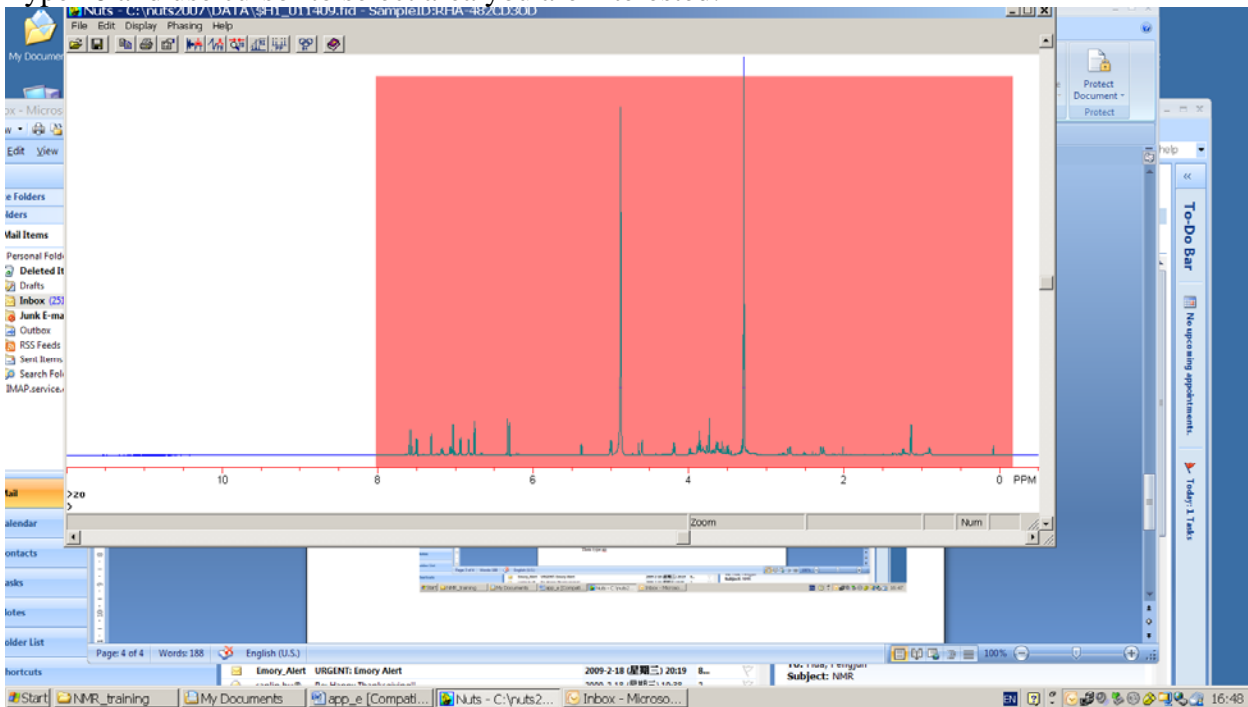
Type **bc em ft**



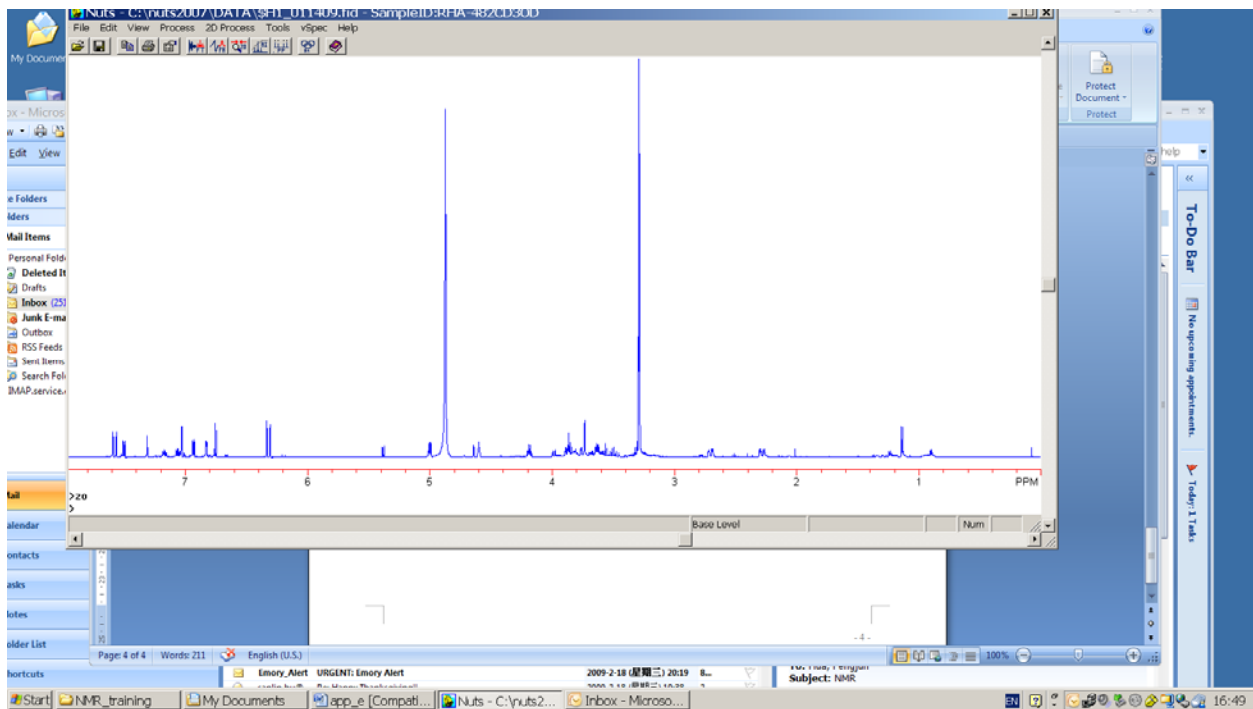
Then type **ap** for auto phase.



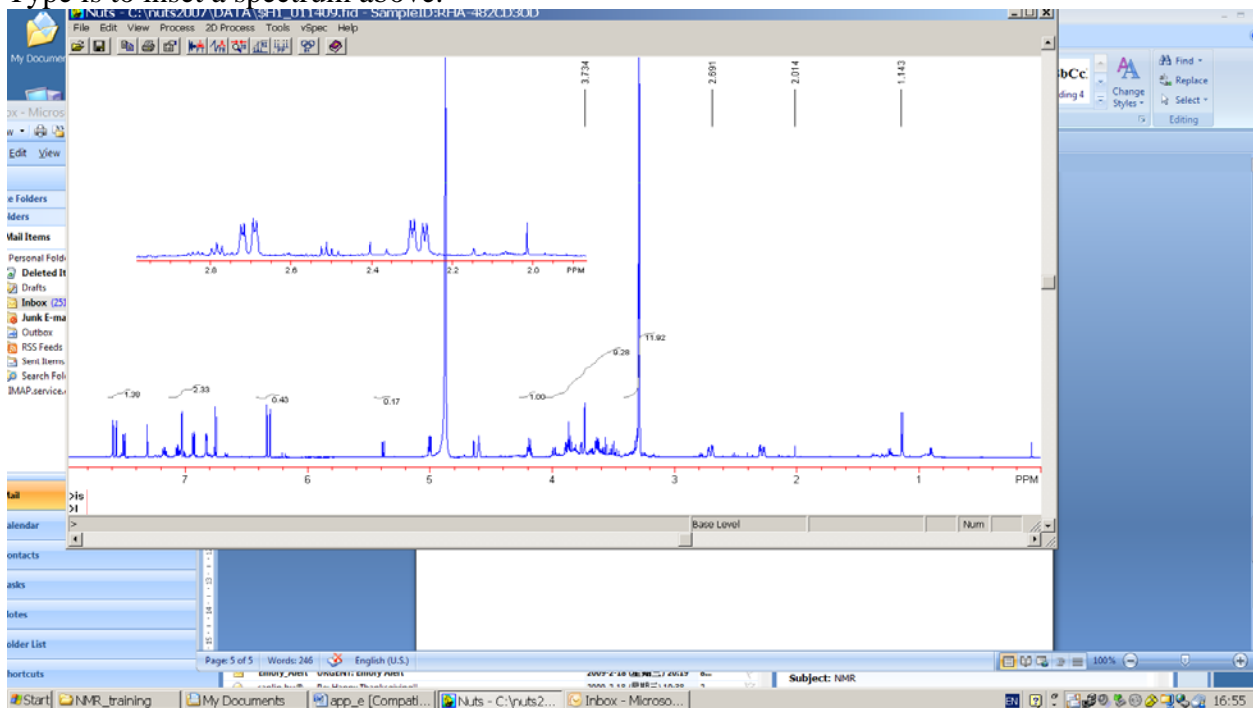
Type **zo** and use cursor to select area you are interested:



The put the mouse into red area and click right mouse button.



Use the right bar to increase the peak height. Type **id** to integrate the spectrum. Click help for more information. You could print the spectrum at this point. You could print it as a PDF file. Type **is** to inset a spectrum above.



You could print the spectrum with the inset, integrals, and peak labels. Also you could save it a file that could use on the power point and Microsoft word. For further instruction, download the manual from their website.